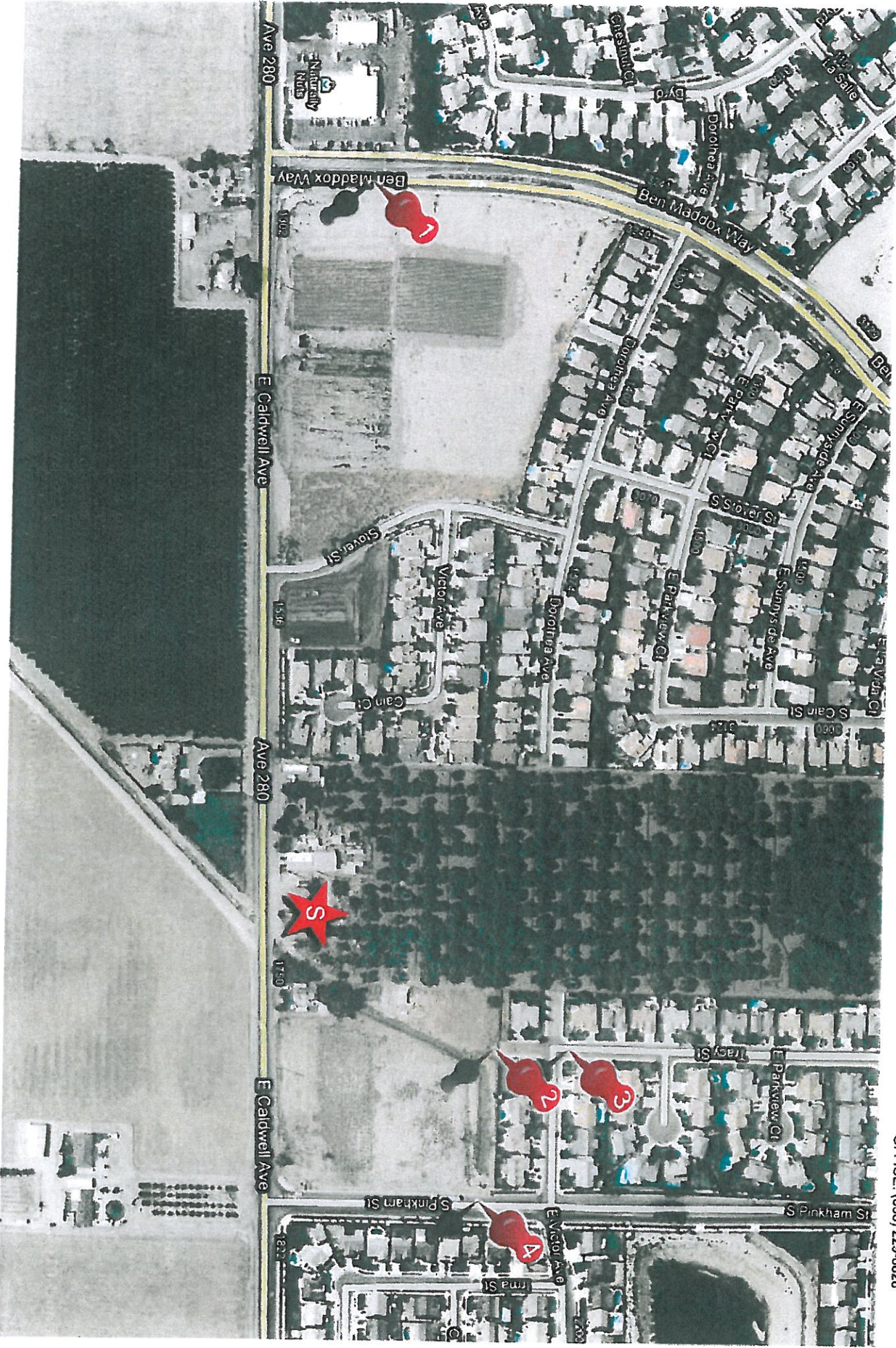


# VICINITY MAP PHOTOSIMULATION VIEWPOINTS

**verizon**wireless  
E. CALDWELL  
SITE NUMBER: 193513  
1748 EAST CALDWELL AVENUE  
VISALIA, CA 93292

**SOC** WIRELESS  
11300 SORRENTO VALLEY RD, SUITE 230  
SAN DIEGO, CA 92121  
OFFICE: (858) 229-6828





E. CALDWELL

SITE NUMBER: 193513

1748 EAST CALDWELL AVENUE  
VISALIA, CA 93292



WIRELESS

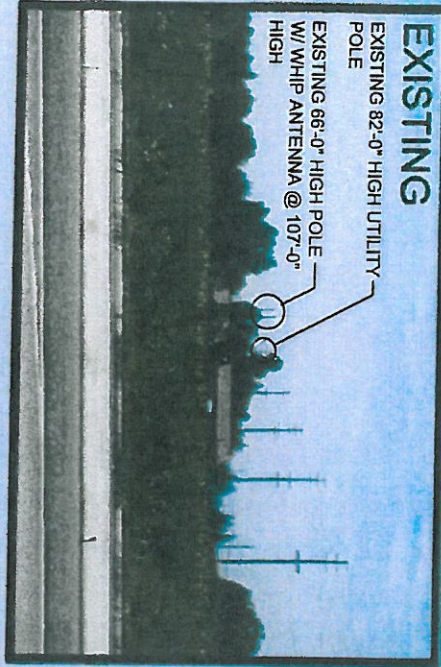
11300 SORRENTO VALLEY RD, SUITE 230  
SAN DIEGO, CA 92121  
OFFICE: (658) 229-6828

# PHOTOSIMULATION VIEW 1

## EXISTING

EXISTING 82'-0" HIGH UTILITY POLE

EXISTING 66'-0" HIGH POLE W/ WHIP ANTENNA @ 107'-0" HIGH



NEW VERIZON ANTENNAS, (4) ANTENNAS PER SECTOR, (3) SECTORS WITH A TOTAL OF (12) ANTENNAS MOUNTED ON NEW VERIZON 80'-0" HIGH MONOPOLE



# PHOTOSIMULATION VIEW 2

**Verizon**wireless  
E. CALDWELL  
SITE NUMBER: 193513  
1748 EAST CALDWELL AVENUE  
VISALIA, CA 93292

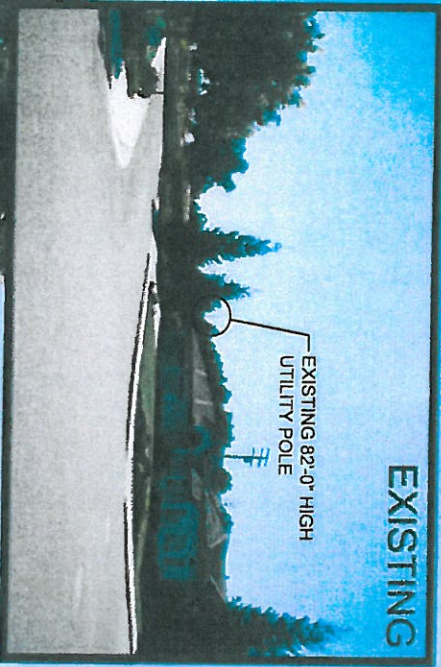
**SID** WIRELESS  
11300 SORRENTO VALLEY RD, SUITE 230  
SAN DIEGO, CA 92121  
OFFICE: (858) 229-6828



# PHOTOSIMULATION VIEW 3

**verizon**wireless  
E. CALDWELL  
SITE NUMBER: 193513  
1748 EAST CALDWELL AVENUE  
VISALIA, CA 93292

**SID**  
WIRELESS  
11300 SORRENTO VALLEY RD, SUITE 230  
SAN DIEGO, CA 92121  
OFFICE: (858) 229-6828



**EXISTING**

EXISTING 82'-0" HIGH  
UTILITY POLE

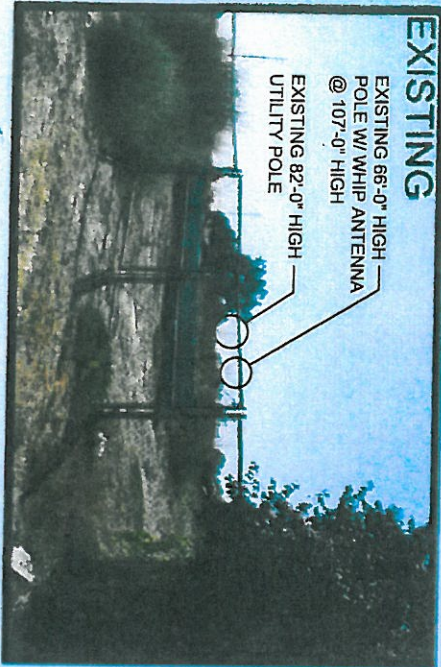
NEW VERIZON ANTENNAS, (4)  
ANTENNAS PER SECTOR, (3)  
SECTORS WITH A TOTAL OF (12)  
ANTENNAS MOUNTED ON NEW  
VERIZON 80'-0" HIGH MONOPOLE



# PHOTOSIMULATION VIEW 4

**verizon**wireless  
E. CALDWELL  
SITE NUMBER: 193513  
1748 EAST CALDWELL AVENUE  
VISALLA, CA 93292

**SID** WIRELESS  
11300 SORRENTO VALLEY RD, SUITE 230  
SAN DIEGO, CA 92121  
OFFICE: (858) 229-8828



**EXISTING**  
EXISTING 66'-0" HIGH  
POLE W/ WHIP ANTENNA  
@ 107'-0" HIGH  
EXISTING 82'-0" HIGH  
UTILITY POLE



NEW VERIZON ANTENNAS, (4)  
ANTENNAS PER SECTOR, (3)  
SECTORS WITH A TOTAL OF (12)  
ANTENNAS MOUNTED ON NEW  
VERIZON 80'-0" HIGH MONOPOLE

**VICINITY MAP**  
**PHOTOSIMULATION VIEWPOINTS**

**verizon**wireless

**E. CALDWELL**  
**SITE NUMBER: 193513**  
**1748 EAST CALDWELL AVENUE**  
**VISALIA, CA 93292**

**SOC**  
**WIRELESS**  
**11300 SORRENTO VALLEY RD, SUITE 230**  
**SAN DIEGO, CA 92121**  
**OFFICE: (858) 229-6828**





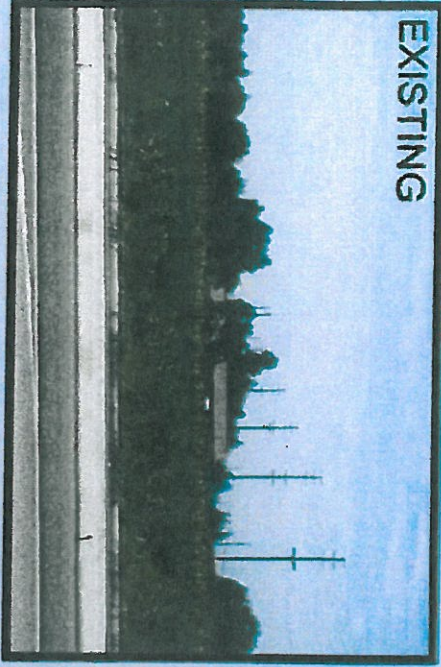
**verizon**wireless  
E. CALDWELL

SITE NUMBER: 193513  
1748 EAST CALDWELL AVENUE  
VISALIA, CA 93292

**SID**  
WIRELESS  
11300 SORRENTO VALLEY RD, SUITE 230  
SAN DIEGO, CA 92121  
OFFICE: (658) 229-6828

# PHOTOSIMULATION VIEW 1

EXISTING



NEW VERIZON ANTENNAS, (4) ANTENNAS PER SECTOR, (3) SECTORS WITH A TOTAL OF (12) ANTENNAS MOUNTED ON NEW VERIZON 80'-0" HIGH MONOPOLE





# PHOTOSIMULATION VIEW 2

**verizon**wireless  
E. CALDWELL  
SITE NUMBER: 193513  
1748 EAST CALDWELL AVENUE  
VISALIA, CA 93292

**SID**  
WIRELESS  
11300 SORRENTO VALLEY RD, SUITE 230  
SAN DIEGO, CA 92121  
OFFICE: (858) 229-6828

EXISTING



NEW VERIZON ANTENNAS, (4) ANTENNAS PER SECTOR, (3) SECTORS WITH A TOTAL OF (12) ANTENNAS MOUNTED ON NEW VERIZON 80'-0" HIGH MONOPOLE





# PHOTOSIMULATION VIEW 3

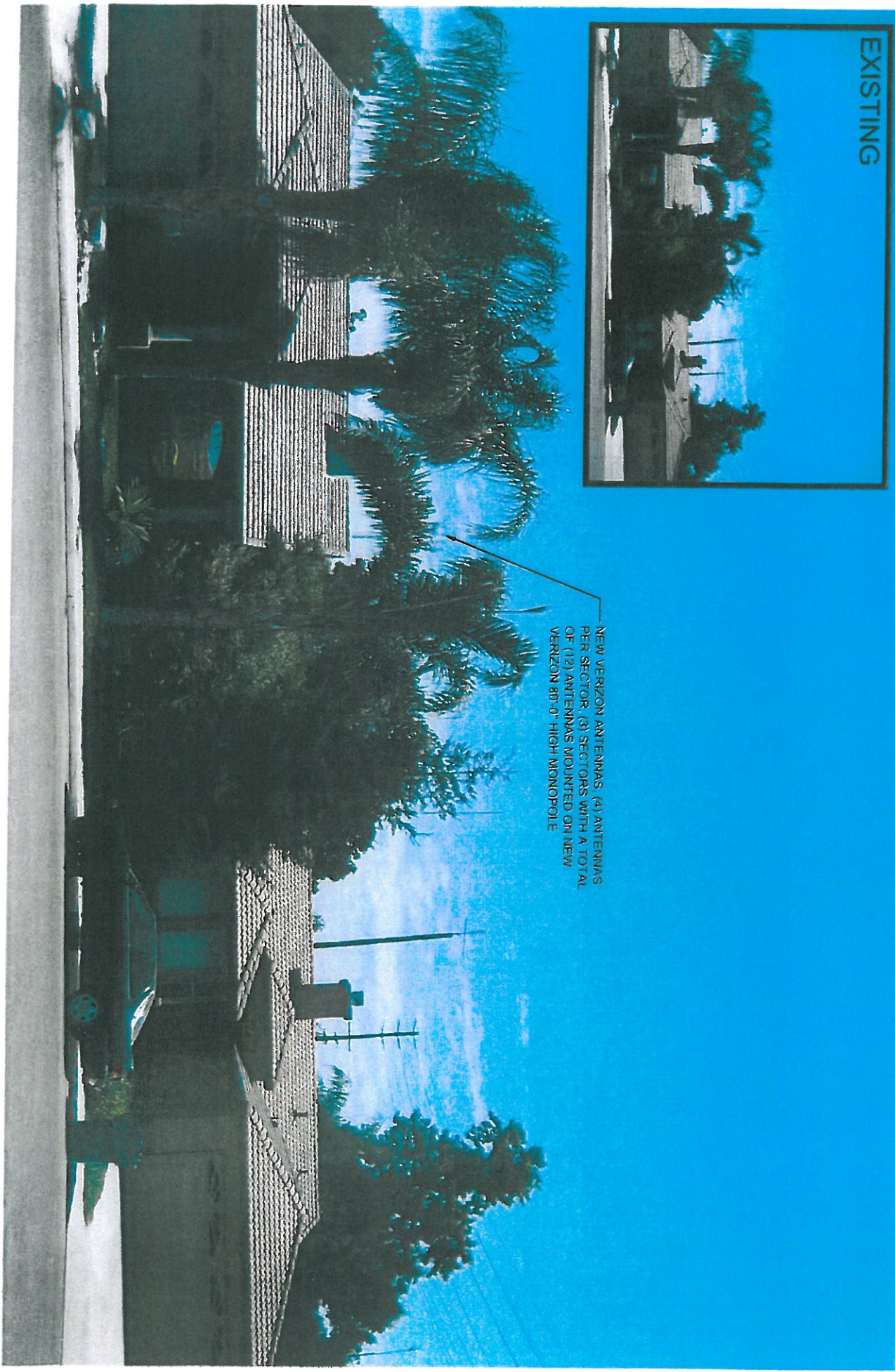
**verizon**wireless  
E. CALDWELL  
SITE NUMBER: 193513  
1748 EAST CALDWELL AVENUE  
VISALIA, CA 93292

**SID** WIRELESS  
11300 SORRENTO VALLEY RD. SUITE 230  
SAN DIEGO, CA 92121  
OFFICE: (858) 229-6828



EXISTING

NEW VERIZON ANTENNAS, (4) ANTENNAS PER SECTOR, (3) SECTORS WITH A TOTAL OF (12) ANTENNAS MOUNTED ON NEW VERIZON 80'-0" HIGH MONOPOLE



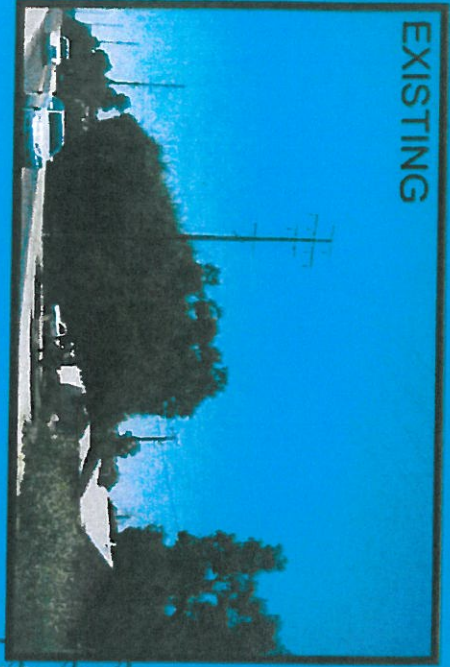


# PHOTOSIMULATION VIEW 4

**verizon**wireless  
E. CALDWELL  
SITE NUMBER: 193513  
1748 EAST CALDWELL AVENUE  
VISALIA, CA 93292

**SD** WIRELESS  
11300 SORRENTO VALLEY RD. SUITE 230  
SAN DIEGO, CA 92121  
OFFICE: (858) 229-6828

EXISTING



NEW VERIZON ANTENNAS, (4) ANTENNAS  
PER SECTOR, (3) SECTORS WITH A TOTAL  
OF (12) ANTENNAS MOUNTED ON NEW  
VERIZON 80'-0" HIGH MONOPOLE





October 8, 2010

Visalia City Council  
425 E. Oak Street, Suite 301  
Visalia, CA 93291

Regarding: Proposed Cell Site "East Caldwell"

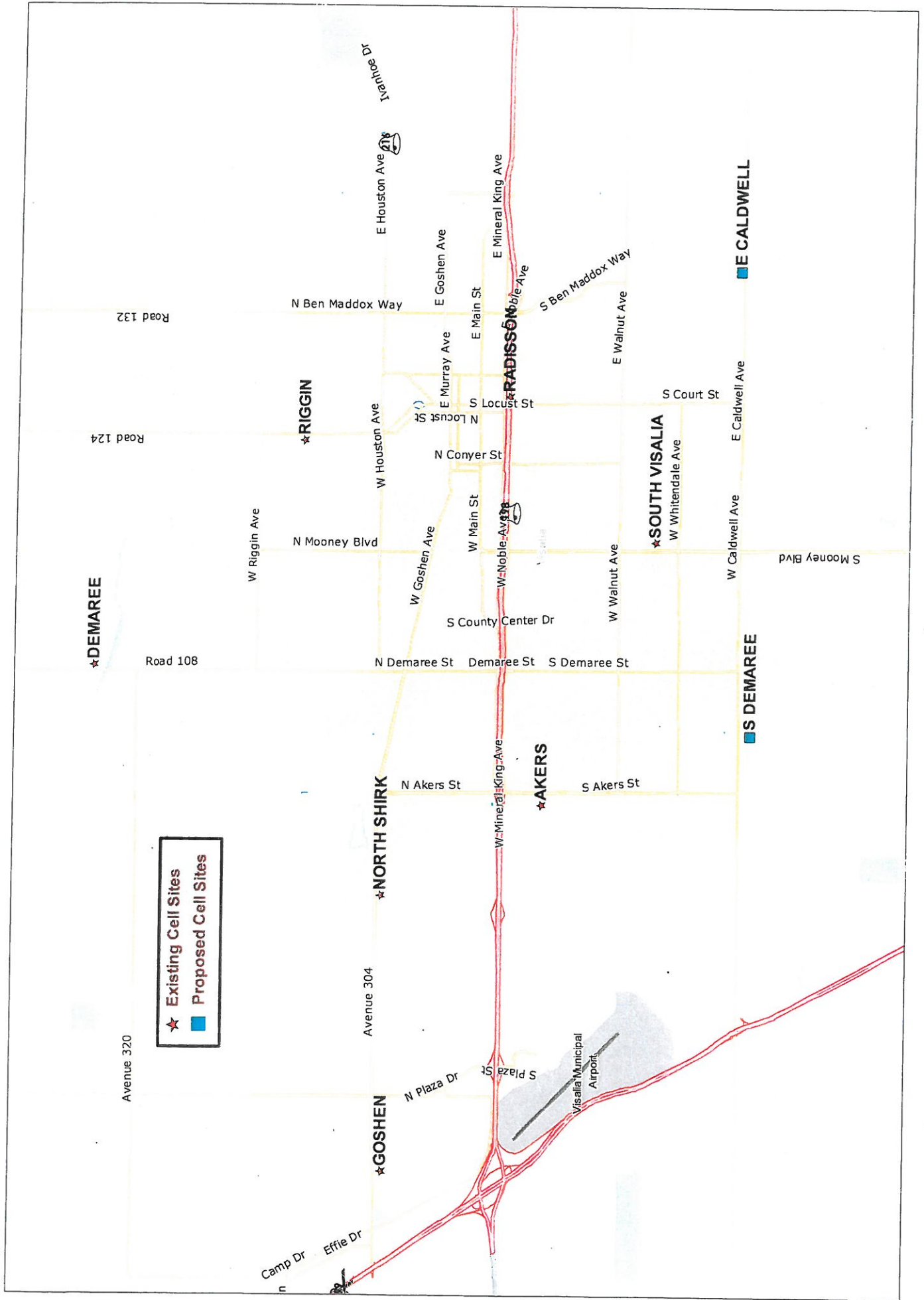
To Whom It May Concern:

The Verizon Wireless cell site proposed to be built at 1748 E Caldwell Ave, Visalia, CA is intended to provide wireless voice and data services to the Ben Maddox Way & E Walnut Ave area to the north, and Santa Fe Ave & Ave 272 area to the southwest. These areas currently have weak in-door cellular service. Verizon Wireless receives many complaints and requests for enhanced service from customers in these areas. This project is designed to address these issues and prepare for future growth.

Sincerely,

Linda Lascano  
RF Engineer  
Verizon Wireless  
3257 N Marks Ave  
Fresno, CA 93722

# Visalia Market – Existing Vzw cellsites and Proposed.



# E Caldwell – Needed for Capacity Off-load of Radisson & South Visalia

