

City of Visalia

Mapping Workshop #1 Notes

City Council Redistricting

Wednesday, October 13, 2021, at 6 p.m.

Location: Whitendale Community Center

630 W. Beech Ave., Visalia, CA 93277

I. Welcomes and Introductions

- Welcome from Jeff Tilton, Senior Consultant, National Demographic Corporation

II. Presentation from Jeff Tilton, Senior Consultant, National Demographics Corporation

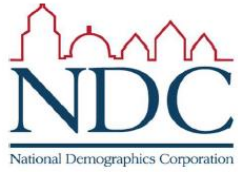
- PowerPoint included starting on page three of these notes
- Mr. Tilton explained the process the City has undertaken so far
- Explanation of the California Census process and how the data has to be adjusted, noting NDC “found a ton of errors”
- Discussed redistricting rules and goals, took questions from the public on the California and the Fair Maps Act
- Discussed possible neighborhoods and communities of interest
- Members of the public shared that they would like to see District 4 be “wider and not cross 198”, they’d like to “keep the old north Visalia neighborhood intact” because the area is “cracked”
- Discussed current City Council districts in Visalia and City staff member Greg Mattis pulled up the current map from the City website.
- Mr. Tilton noted there was a “huge compression occurring” and discussed how NDC was “taking care of our 12/15 clients first, then moving to our 4/17 clients”.
- When asked by a member of the public when NDC would have the City of Visalia data, Mr. Tilton responded, “We’re hoping within the next week or two to have data.”
- Mr. Tilton discussed how the maps would be presented to the City Council and there was further discussion on criteria for maps. Mr. Tilton shared, “Submit a map any way you want, and we will take it”, adding that they will do their best to represent the submitters thought.
- The presentation concluded with the last few slides looking at the mapping tools, specifically discussing District R and its functionality.

III. Questions and Group Discussion

There were 25 people in attendance.

The Workshop ended at approximately 7 p.m.

To view the PowerPoint slides presented during the presentation, the presentation begins on page 3 of these notes.



City of Visalia

Redistricting Workshop

October 2021

Dr. Jeff Tilton, Senior Consultant
National Demographics Corporation

Introductions

Our Goals

You Learn

We Listen to You

Mapping Tools for You

You Leave Empowered to Give Effective Feedback



Our Schedule

AGENDA

Process, Rules and Goals

Neighborhoods/Communities of Interest

Mapping Tools

Next Steps

Redistricting Process

Step	Description
Initial Hearing August 23, 2021	<ul style="list-style-type: none"> • Staff/Measure N Oversight Committee • Held prior to release of draft maps • Educate and solicit input on the communities in the Districts
Initial Hearing September 20, 2021	<ul style="list-style-type: none"> • City Council • Held prior to release of draft maps • Educate and solicit input on the communities in the Districts
Census Data Releases	<ul style="list-style-type: none"> • Census Bureau releases official 2020 Census population data – Aug. 12 • California’s official ‘prisoner-adjusted’ 2020 redistricting data – Sept. 20, 27
Public Workshops	<ul style="list-style-type: none"> • Discuss communities of interest, neighborhoods; learn the mapping tools • October 13, 6 p.m. (Whitendale Community Center) • October 23, 10 a.m. (Anthony Community Center)
Draft Map Hearing December 6, 2021 <i>7:30 p.m.</i>	<ul style="list-style-type: none"> • Discuss and revise the draft maps • Discuss the election sequence • Deadline to submit draft maps: November 22, 2021, 5 p.m.
Draft Map Hearing January 10, 2022 <i>7:30 p.m.</i>	<ul style="list-style-type: none"> • Discuss and select final map; discuss and determine election sequence • Deadline to submit draft maps: December 27, 2021, 5 p.m. • Post draft maps by January 3, 2022, 2022, 5 p.m.



Dates/locations subject to change

October 2021

5

Redistricting Rules and Goals

1. Federal Laws	2. California Criteria for Cities	3. Other Traditional Redistricting Principles
<ul style="list-style-type: none">• Equal Population• Federal Voting Rights Act• No Racial Gerrymandering	<ol style="list-style-type: none">1. Geographically contiguous2. Undivided neighborhoods and “communities of interest” (Socio-economic geographic areas that should be kept together)3. Easily identifiable boundaries4. Compact (Do not bypass one group of people to get to a more distant group of people)	<ul style="list-style-type: none">• Minimize voters shifted to different election years• Respect voters’ choices / continuity in office• Future population growth• Preserving the core of existing districts



Prohibited: “Shall not favor or discriminate against a political party.”

Defining Neighborhoods

1st Question: What is your neighborhood?

2nd Question: What are its geographic boundaries?

Examples of physical features defining a neighborhood boundary:

- Natural neighborhood dividing lines, such as highway or major roads, rivers, canals and/or hills
- Areas around parks or schools
- Other neighborhood landmarks

In the absence of public testimony, planning records and other similar documents may provide definition.



Beyond Neighborhoods: Defining Communities of Interest

1st Question: What defines your community?

- Geographic Area, plus
- Shared issue or characteristic
 - Shared social or economic interest
 - Impacted by city policies
- Tell us “your community’s story”

2nd Question: Would this community benefit from being “included within a single district for purposes of its effective and fair representation”?

- Or would it benefit more from having multiple representatives?

Definitions of Communities of Interest may not include relationships with political parties, incumbents, or political candidates.

Possible Neighborhoods / Communities



Break

Public Mapping and Map Review Tools

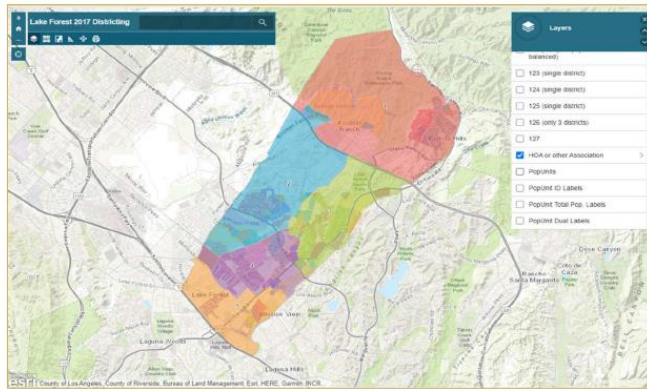
- **Different tools for different purposes**
- **Different tools for different levels of technical skill and interest**
 - Simple “review draft maps” tool
 - Easy-to-use “Draw your neighborhood” tool
 - Paper- and Excel-based simple “Draw a draft map” tools
 - Powerful, data-rich “Draw a draft map” tool

Whether you use the powerful (but complicated) online mapping tool, Excel, the paper kit, or just draw on a napkin, we welcome your maps!

Simple Map Review Tool

Online Interactive Review Map

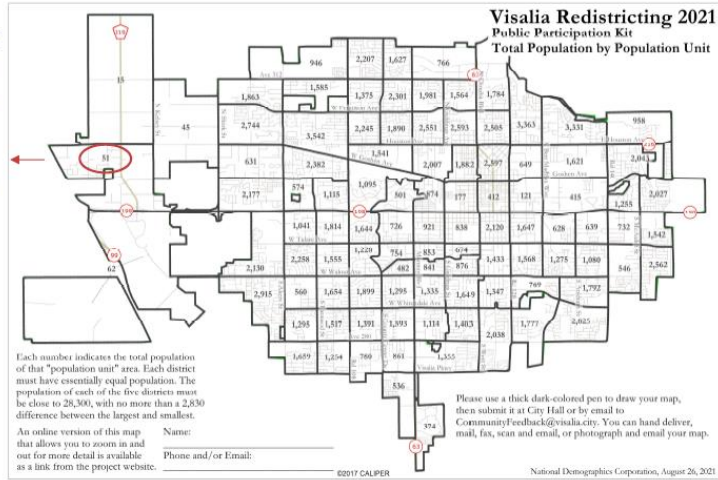
- ESRI's "ArcGIS Online" – similar to Google Maps in ease of use
- Used to review, analyze and compare maps, not to create them
- Includes overlays of "community of interest" and other data



Simple Map Drawing Tool

Paper “Public Participation Kit”

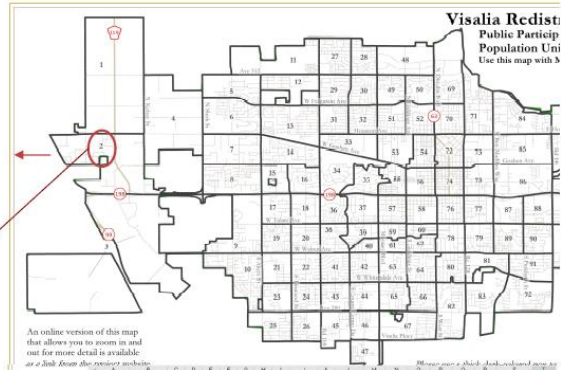
- For those without internet access or who prefer paper
- Total Population Counts only – no demographic numbers



Simple Map Drawing Tool + Excel Supplement

“Public Participation Kit”

- For those who know Excel and do not wish to use online tools
- Adds CVAP data
- Excel does the math



Name: _____ Phone and/or fax: _____

City of Visalia, California 2011 Public Participation Kit

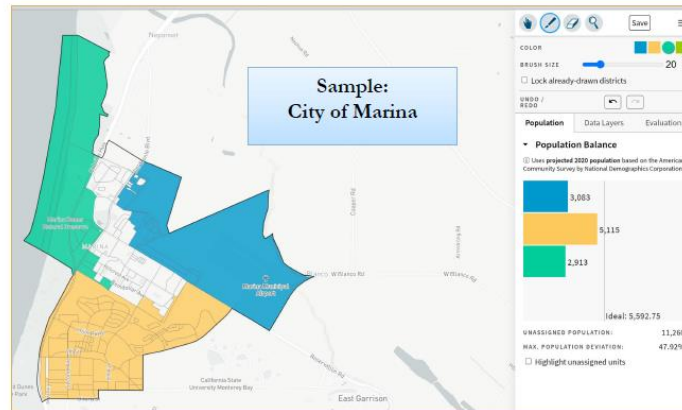
District	Unit	Total Population					Voting Age Population					Citizen Voting Age Population					Non-2014 Registration				
		Pop	Hispanic	Black	Asian	Other	Pop	Hispanic	Black	Asian	Other	Pop	Hispanic	Black	Asian	Other	Pop	Hispanic	Black	Asian	Other
1	1	1,121	42	397	18	47	873	297	442	12	831	390	441	0	0	574	193	3	243	43	32
2	2	2,239	128	1,499	43	94	1,744	741	859	4	1,515	720	1,140	0	45	1,295	432	11	7	555	140
3	3	1,643	275	42	23	1,008	741	236	15	400	233	145	0	20	905	206	3	4	161	72	38
4	4	1,145	74	883	62	84	1,272	664	685	62	1,231	461	639	19	111	1,022	266	11	11	291	89
5	5	2,011	209	1,855	14	79	1,639	144	1,392	64	1,511	58	1,337	12	38	1,774	146	7	1,059	67	41
6	6	812	16	489	4	39	517	37	440	36	471	22	423	3	13	525	33	13	2	337	15
7	7	1,743	114	1,429	14	14	1,714	547	117	14	1,683	533	1,428	1	14	1,776	4	4	141	78	21

Schools' Comments about the plan: _____

DistrictR

“Draw Your Community of Interest” focus

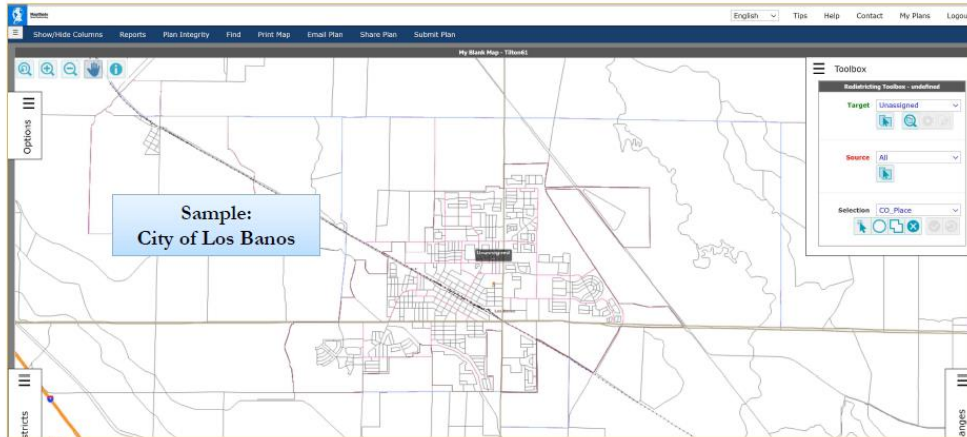
- [districtR.org](https://districtr.org)
- Also includes simple district-mapping tool; Only available in English
- Similar external options: [Representable.org](https://representable.org), [DrawMyCACommunity.org](https://drawmycacomunity.org)



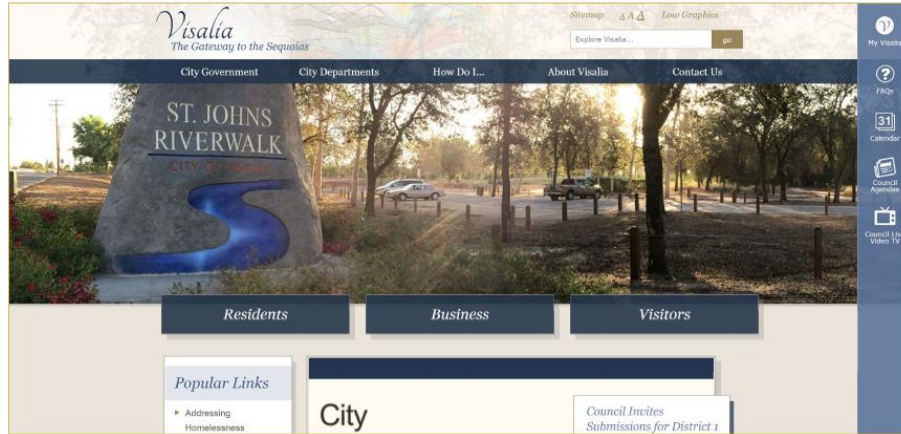
Caliper's "Maptitude Online Redistricting"

Full Database, Powerful Online Mapping Tool

- Powerful, common, data-rich online tool
- Six language options: English, Spanish, Portuguese, Vietnamese, Mandarin and Korean



Share Your Thoughts



Website: www.visalia.city/drawvisalia

Phone: 559.713.4535 | **Email:** CommunityFeedback@visalia.city

