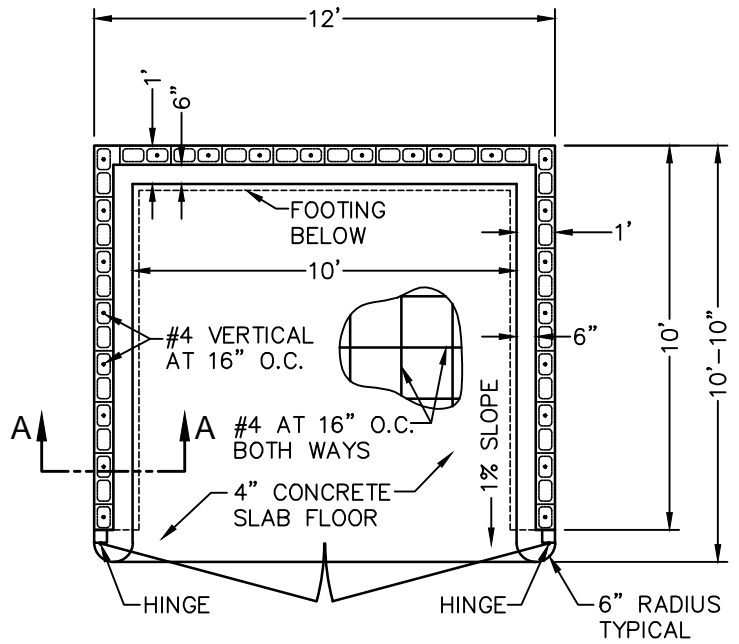
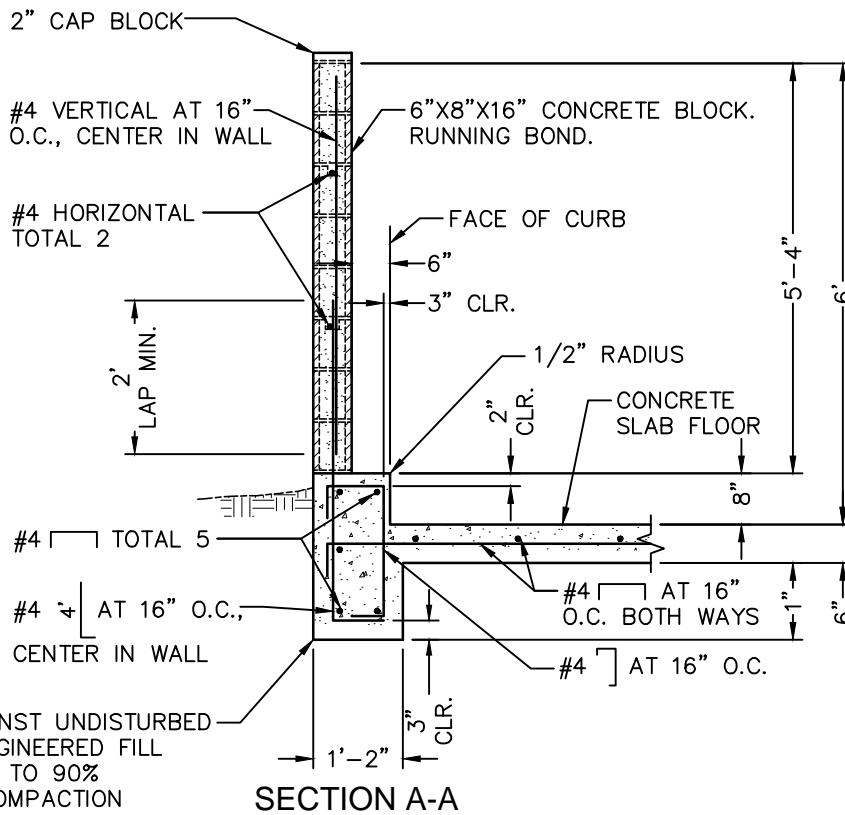


CURB CORNER DETAIL
FOOTING CORNER DETAIL SIMILAR



PLAN



NOTE:
FOR ALL APPLICABLE NOTES, SEE REFUSE CONTAINER ENCLOSURE NOTES STANDARD DRAWING.

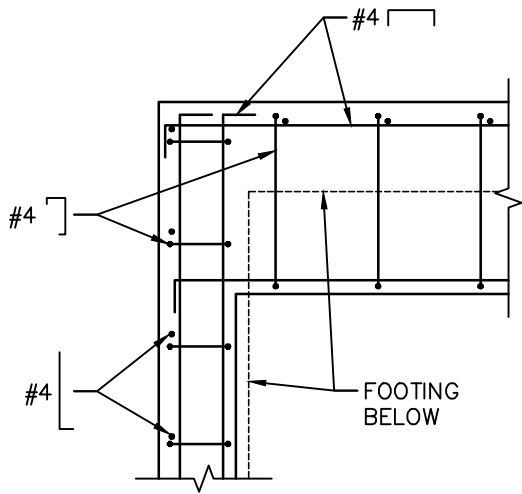
APPROVED BY: *[Signature]* 09/16/16
CITY ENGINEER R.P.E. 81734 DATE

CITY OF VISALIA
DESIGN & IMPROVEMENT STANDARDS

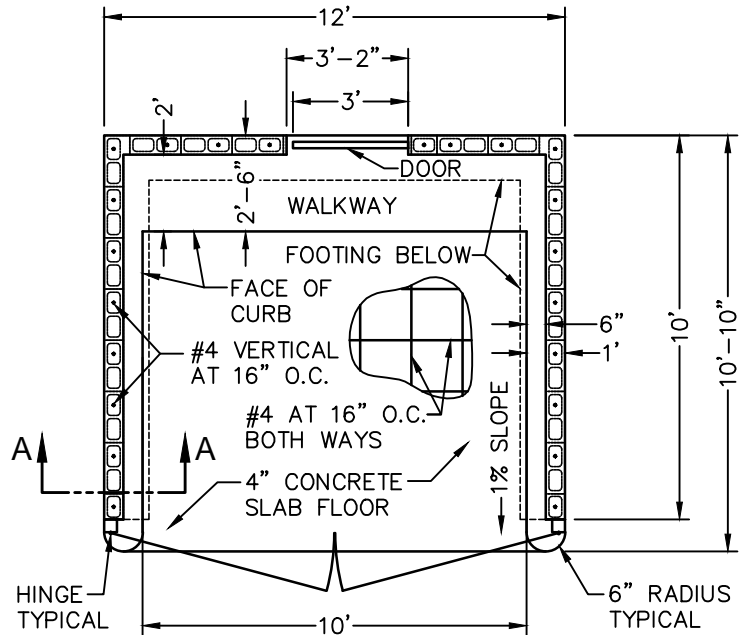
12' REFUSE CONTAINER ENCLOSURE

REVISIONS
08/15/16
BK 2016

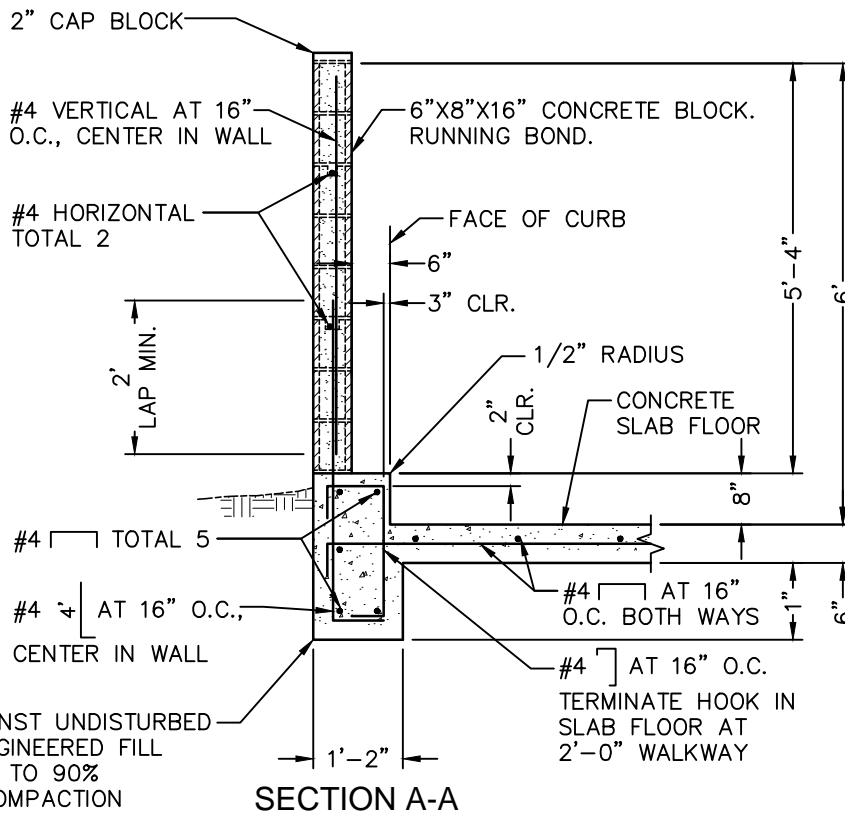
R-1



CURB CORNER DETAIL
FOOTING CORNER DETAIL SIMILAR



PLAN



SECTION A-A

NOTE:
FOR ALL APPLICABLE NOTES, SEE REFUSE CONTAINER ENCLOSURE NOTES STANDARD DRAWING.

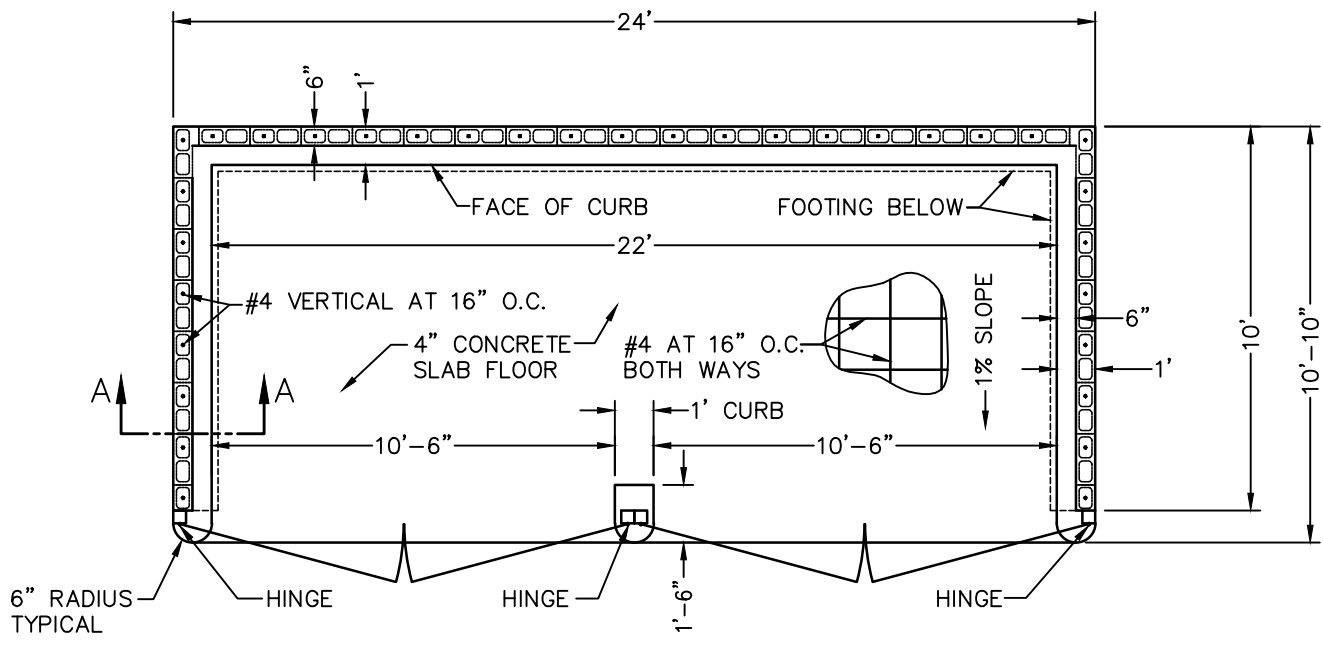
APPROVED BY: *[Signature]* 09/16/16
CITY ENGINEER R.P.E. 81734 DATE

CITY OF VISALIA
DESIGN & IMPROVEMENT STANDARDS

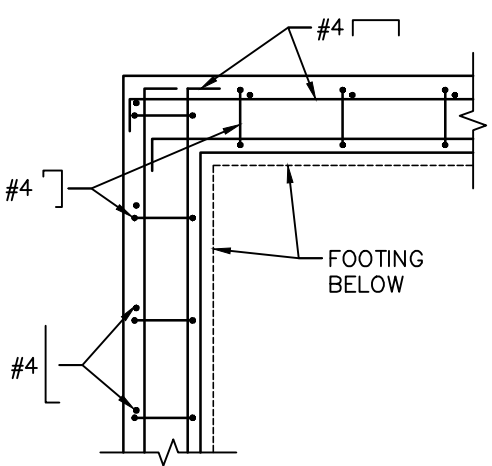
12' REFUSE CONTAINER
ENCLOSURE - WITH DOOR

REVISIONS
08/15/16
BK 2016

R-2

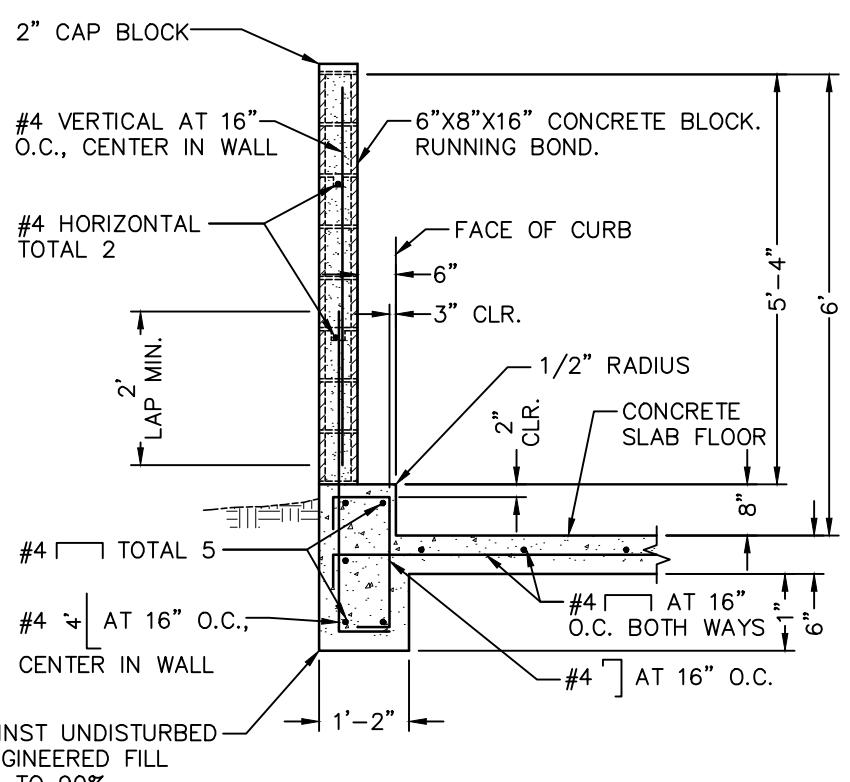


PLAN



CURB CORNER DETAIL
FOOTING CORNER DETAIL SIMILAR

NOTE:
FOR ALL APPLICABLE NOTES, SEE
REFUSE CONTAINER ENCLOSURE
NOTES STANDARD DRAWING.



SECTION A-A

PLACE AGAINST UNDISTURBED
SOIL OR ENGINEERED FILL
COMPACTED TO 90%
RELATIVE COMPACTION

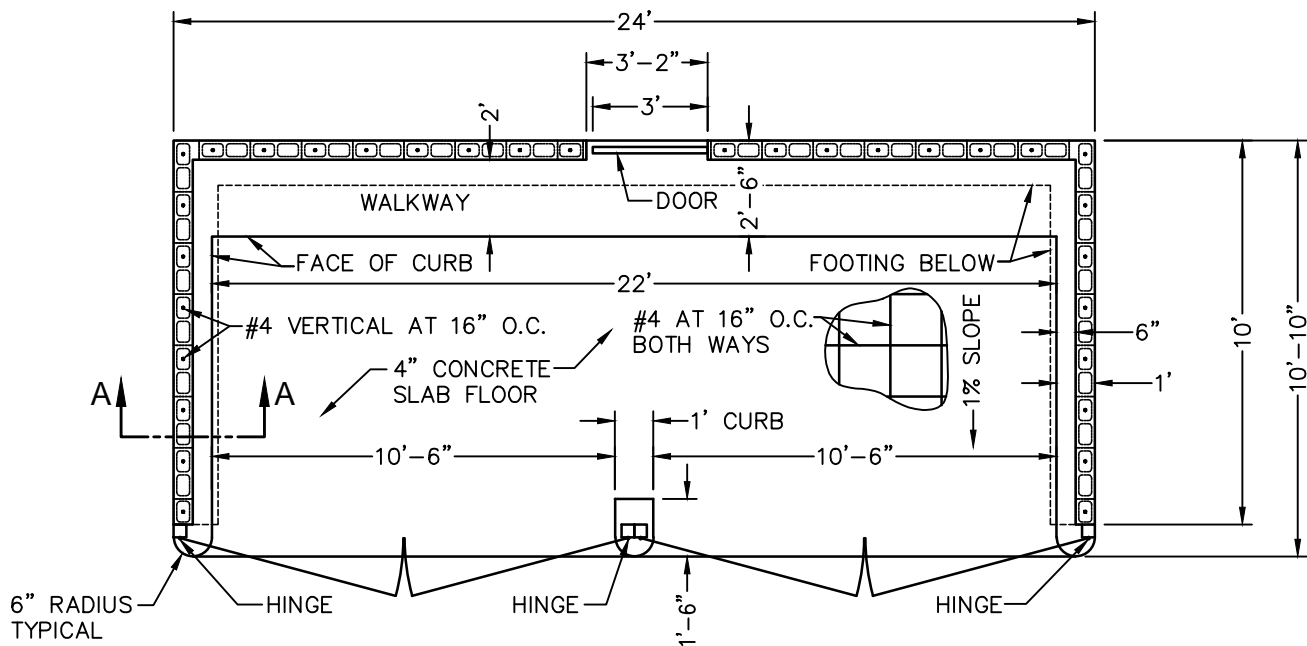
APPROVED BY: *[Signature]* 09/16/16
CITY ENGINEER R.P.E. 81734 DATE

CITY OF VISALIA
DESIGN & IMPROVEMENT STANDARDS

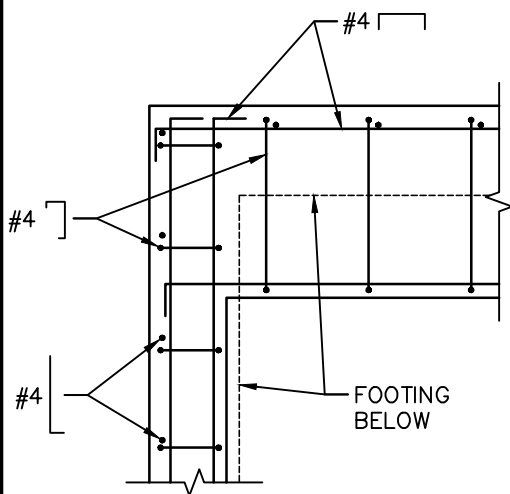
24' REFUSE CONTAINER ENCLOSURE

REVISIONS
08/15/16
BK 2016

R-3



PLAN

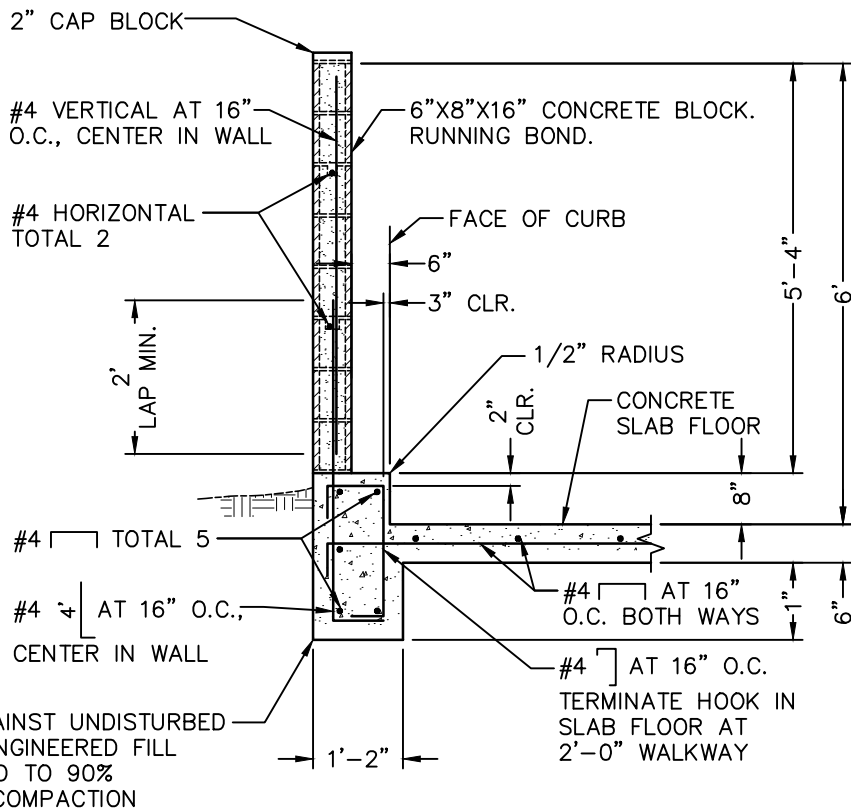


CURB CORNER DETAIL
FOOTING CORNER DETAIL SIMILAR

NOTE:

FOR ALL APPLICABLE NOTES, SEE
REFUSE CONTAINER ENCLOSURE
NOTES STANDARD DRAWING.

PLACE AGAINST UNDISTURBED
SOIL OR ENGINEERED FILL
COMPACTED TO 90%
RELATIVE COMPACTION



SECTION A-A

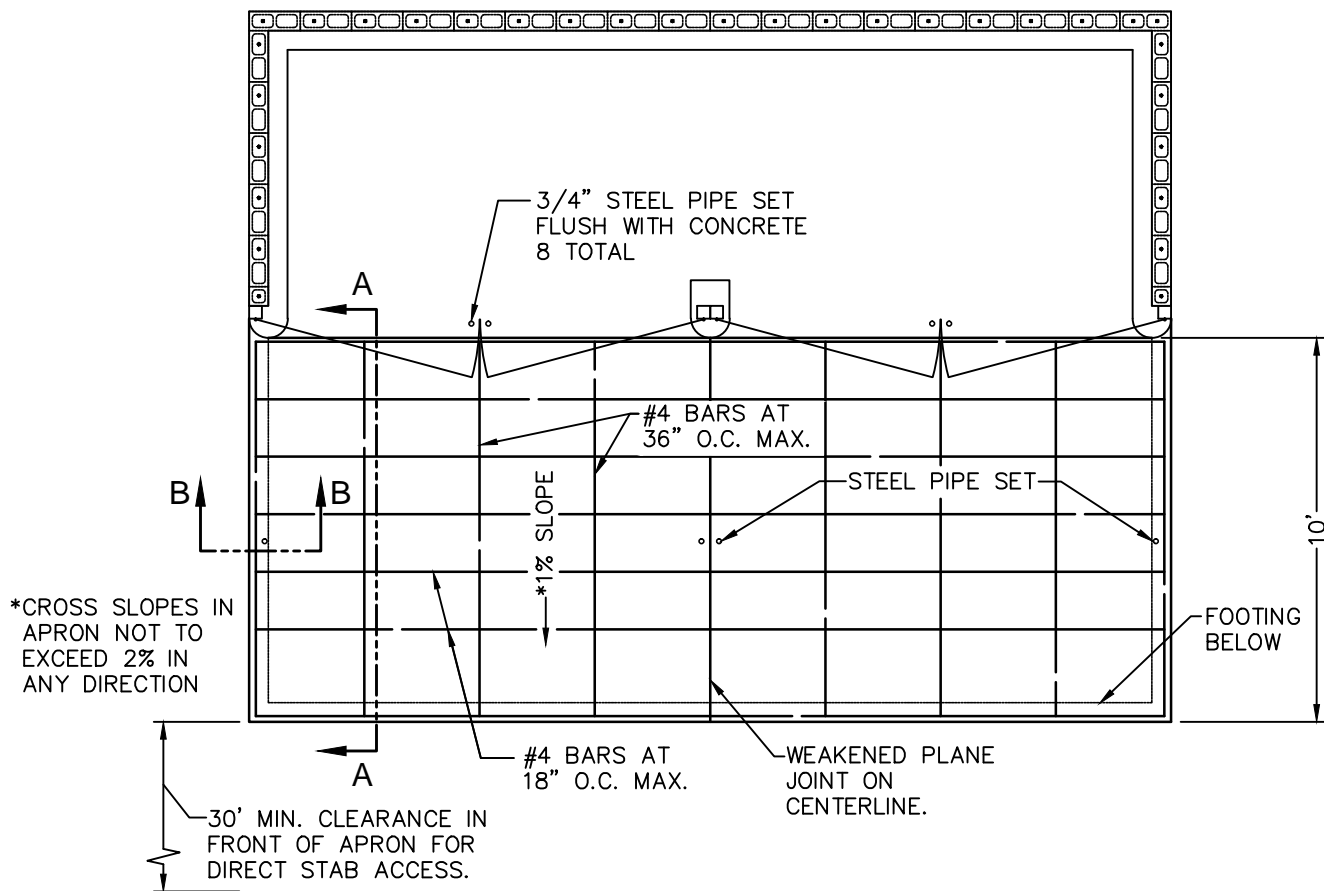
APPROVED BY: *[Signature]* 09/16/16
CITY ENGINEER R.P.E. 81734 DATE

CITY OF VISALIA
DESIGN & IMPROVEMENT STANDARDS

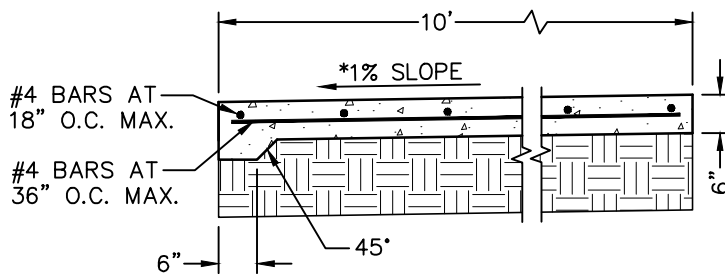
24' REFUSE CONTAINER
ENCLOSURE - WITH DOOR

REVISIONS
08/15/16
BK 2016

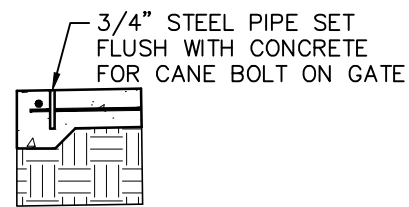
R-4



PLAN



SECTION A-A



SECTION B-B

NOTES:

1. ALL CONCRETE SHALL BE CLASS 3, PRE-MIXED. 28-DAY COMPRESSIVE STRENGTH = 2500 psi MIN.
2. REINFORCING BARS SHALL BE ASTM A615 GRADE 40 MINIMUM DEFORMED STEEL AND SHALL BE CLEAN OF DIRT AND RUST BEFORE PLACEMENT.
3. REINFORCING BARS SHALL HAVE A MINIMUM OF 3" OF CLEAR COVERAGE FROM THE COMPACTED EARTH AND 2" FROM FINISH GRADE.
4. ALL REFUSE CONTAINER ENCLOSURES SHALL HAVE A CONCRETE APRON.
5. CONCRETE PAD SHALL BE PLACED ON MOIST AND COMPACTED BASE MATERIALS. 95% RELATIVE COMPACTION.
6. STEEL PIPE LOCATION IN CONCRETE PAD SHALL BE DETERMINED BY CANE BOLT LOCATION ON GATE. SEE REFUSE CONTAINER ENCLOSURE GATE DETAILS STANDARD DRAWING.

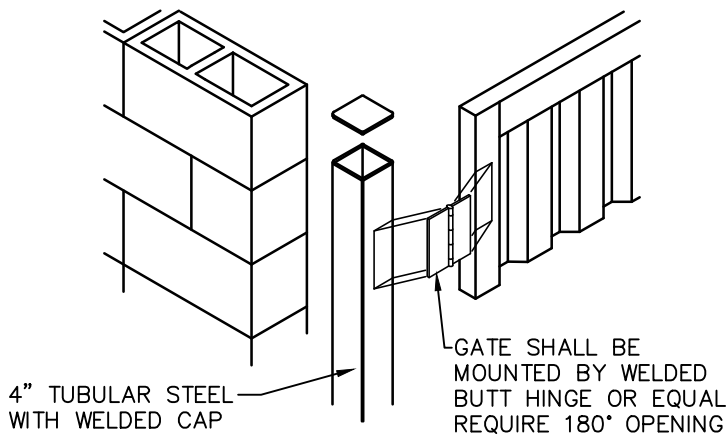
APPROVED BY: 
CITY ENGINEER R.P.E. 81734 DATE 09/16/16

CITY OF VISALIA
DESIGN & IMPROVEMENT STANDARDS

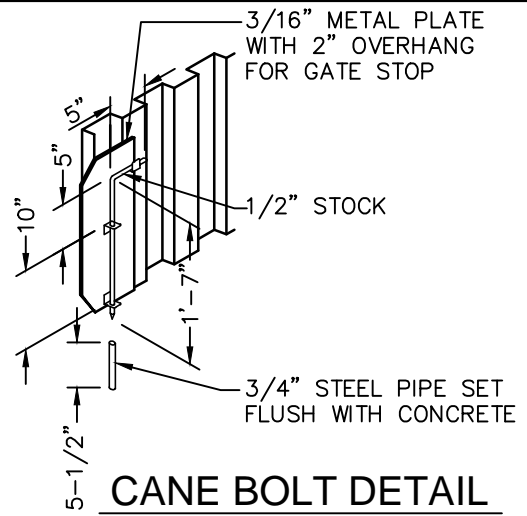
REFUSE CONTAINER ENCLOSURE
CONCRETE APRON DETAILS

REVISIONS
08/15/16
BK 2016

R-5



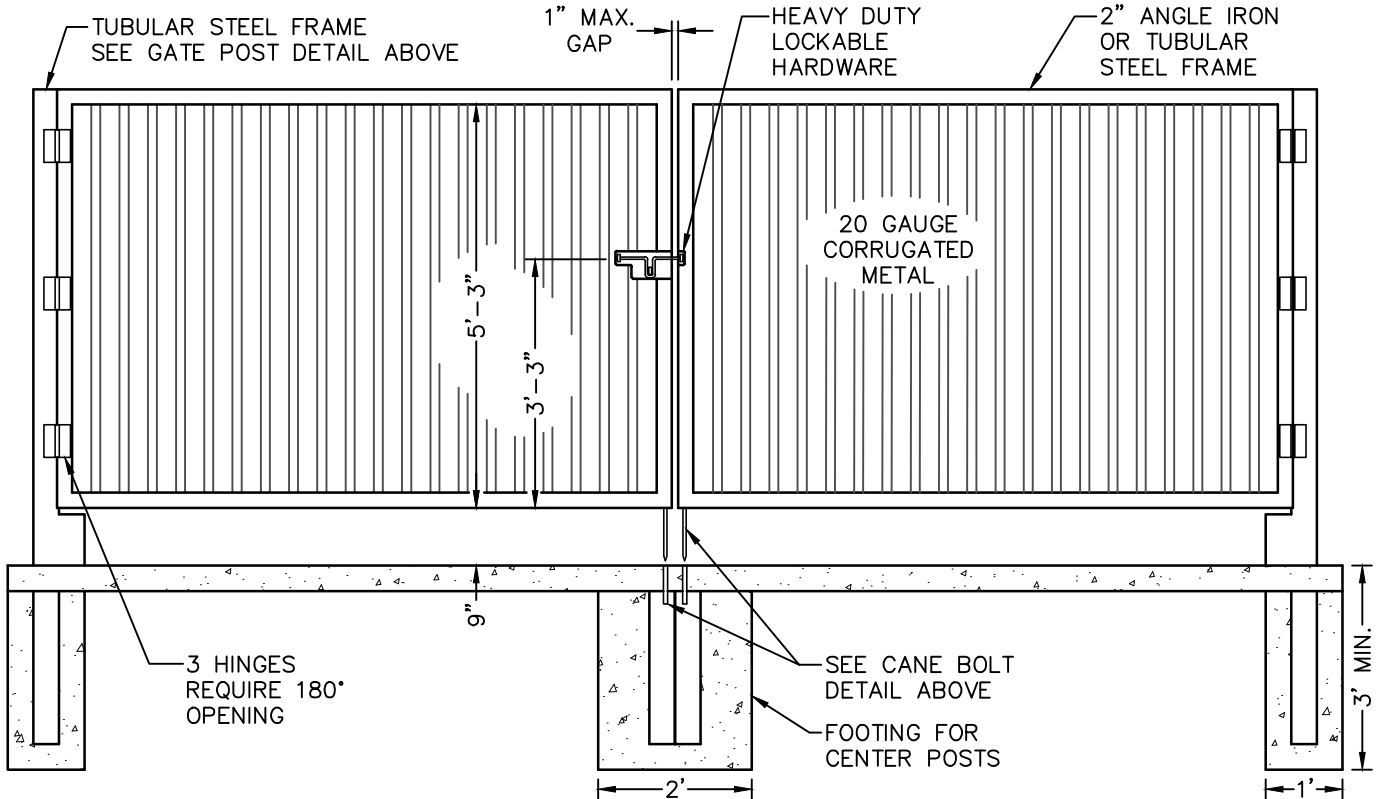
GATE POST DETAIL



CANE BOLT DETAIL

NOTES:

1. GATES TO BE PAINTED TO MATCH BUILDING ACCENT FEATURES.
2. DESIGN, ENGINEERING AND CONSTRUCTION NOT SPECIFICALLY NOTED SHALL BE IN ACCORDANCE WITH ACCEPTED INDUSTRY STANDARDS & OF FIRST QUALITY.
3. CONCRETE APRON SHALL INCLUDE TWO 3/4" STEEL PIPES SET FLUSH WITH THE CONCRETE FOR EACH GATE DOOR, BASED ON LOCATION OF CANE BOLTS ON GATE, TO SECURE THE GATE IN THE OPEN OR CLOSED POSITION. SEE REFUSE CONTAINER ENCLOSURE CONCRETE APRON DETAILS STANDARD DRAWING.
4. GATE POST SHALL ABUT REFUSE CONTAINER ENCLOSURE.
5. SUBMIT DETAILS OF REFUSE CONTAINER ENCLOSURES AND/OR REFUSE CONTAINERS REQUIRED TO BE ACCESSIBLE UNDER THE CURRENT CBC, OR MODIFY THIS DETAIL AS NECESSARY FOR REVIEW AND ACCEPTANCE FROM THE CITY ENGINEER.



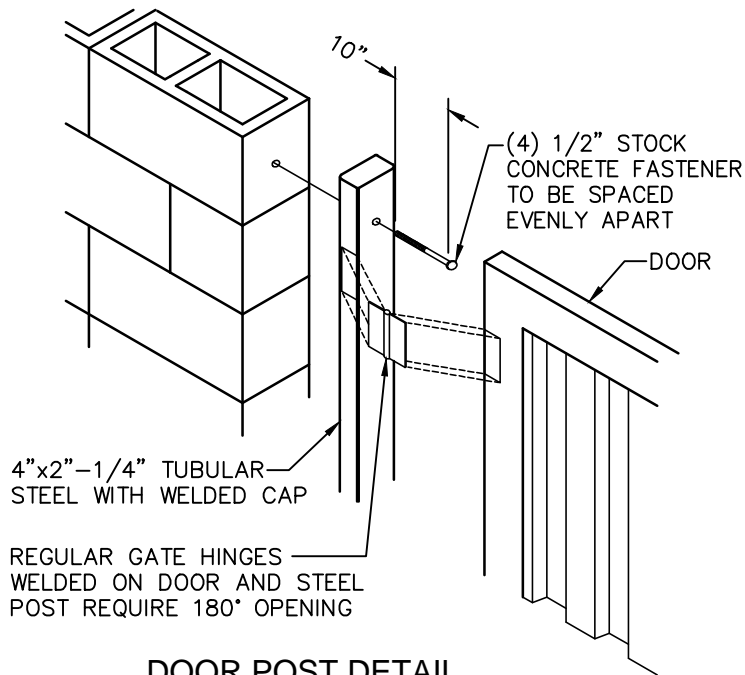
APPROVED BY: *[Signature]* 09/16/16
 CITY ENGINEER R.P.E. 81734 DATE

CITY OF VISALIA
 DESIGN & IMPROVEMENT STANDARDS

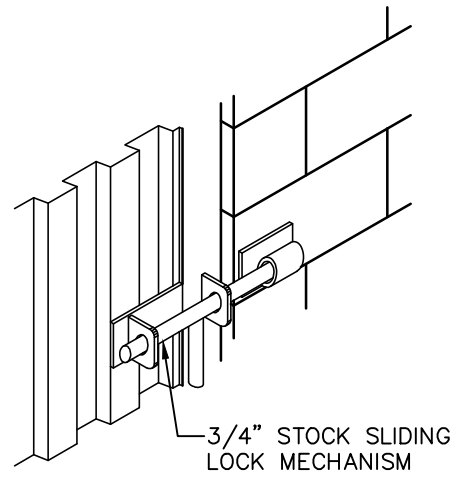
REFUSE CONTAINER ENCLOSURE
 GATE DETAILS

REVISIONS
 09/08/16
 BK 2016

R-6



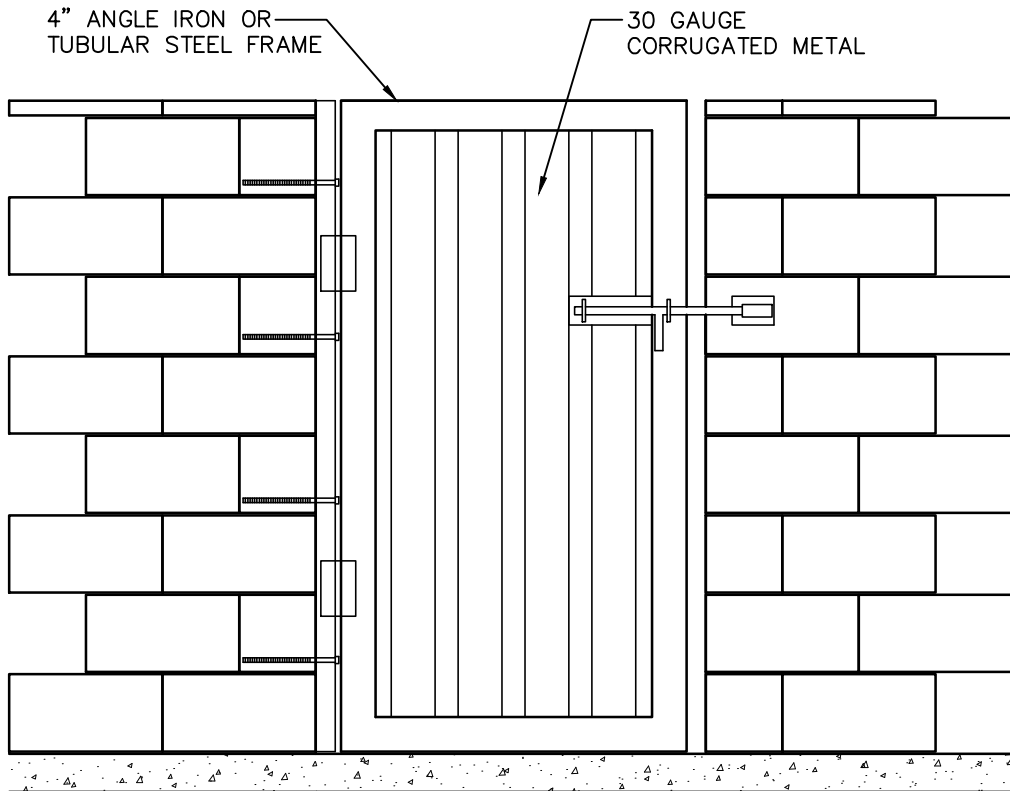
DOOR POST DETAIL



LOCKABLE HARDWARE DETAIL

NOTE:

1. SUBMIT DETAILS OF REFUSE CONTAINER ENCLOSURES AND/OR REFUSE CONTAINERS REQUIRED TO BE ACCESSIBLE UNDER THE CURRENT CBC, OR MODIFY THIS DETAIL AS NECESSARY FOR REVIEW AND ACCEPTANCE FROM THE CITY ENGINEER.



APPROVED BY: *[Signature]* 09/16/16
 CITY ENGINEER R.P.E. 81734 DATE

CITY OF VISALIA
 DESIGN & IMPROVEMENT STANDARDS


REFUSE CONTAINER ENCLOSURE
 DOOR DETAILS

REVISIONS
 08/16/16
 BK 2016

R-7

NOTES:

1. MASONRY ENCLOSURE WALLS SHALL BE FULLY GROUTED.
2. ALL MASONRY SHALL COMPLY WITH CURRENT EDITION OF THE CALIFORNIA BUILDING CODE.
3. SLAB FLOOR AND FOOTING CONCRETE SHALL BE CLASS 3, PRE-MIXED. 28-DAY COMPRESSIVE STRENGTH = 2500 P.S.I. MINIMUM.
4. MASONRY DESIGN IS BASED ON MINIMUM COMPRESSIVE STRENGTH OF $f'_m = 1500$ P.S.I.
5. REINFORCING BARS SHALL BE ASTM A615 GRADE 40 DEFORMED STEEL AND SHALL BE CLEAN OF DIRT AND RUST BEFORE PLACEMENT.
6. GROUT SHALL CONFORM TO THE REQUIREMENTS OF ASTM C476 AND ATTAIN A 28-DAY STRENGTH OF 2000 P.S.I. ADMIXTURES FOR GROUT MUST BE APPROVED BY THE ENGINEER. FIELD ADDITION OF ADMIXTURES IS NOT PERMITTED IN SELF-CONSOLIDATING GROUT.
7. GROUT STOP SHALL CONSIST OF METAL OR PLASTIC LATH APPROVED BY THE MANUFACTURER TO CREATE A BARRIER THAT STOPS THE FLOW OF GROUT WHEN FILLING BLOCK WALL CELLS.
8. REFUSE CONTAINER ENCLOSURE SHALL BE LOCATED A MINIMUM OF 5'-0" FROM ANY BUILDING WALL LINE. OTHERWISE ENCLOSURE MUST COMPLY WITH STRICTER REQUIREMENTS PER THE CALIFORNIA FIRE CODE.
9. ALL HORIZONTAL AND VERTICAL JOINTS SHALL HAVE A CONCAVE FINISH JOINT.
10. GROUND SHALL BE SLOPED AWAY FROM ENCLOSURE WALLS.
11. REFUSE CONTAINER ENCLOSURE SHALL HAVE SOLID FACE GATES.
12. LOCATION OF REFUSE CONTAINER ENCLOSURE SHALL BE APPROVED BY THE CITY OF VISALIA SOLID WASTE DIVISION.
13. ALL REFUSE CONTAINER ENCLOSURES SHALL HAVE A CONCRETE APRON PER REFUSE CONTAINER ENCLOSURE CONCRETE APRON DETAILS STANDARD DRAWING.
14. SUBMIT DETAILS OF REFUSE CONTAINER ENCLOSURES AND/OR REFUSE CONTAINERS REQUIRED TO BE ACCESSIBLE UNDER THE CURRENT CBC, OR MODIFY THIS DETAIL AS NECESSARY FOR REVIEW AND ACCEPTANCE FROM THE CITY ENGINEER.
15. WHERE REQUIRED, PROVIDE ACCESSIBLE TRASH CONTAINERS MEETING THE ACCESSIBILITY REQUIREMENTS UNDER THE CURRENT CBC. COORDINATE WITH SOLID WASTE DIVISION FOR SERVICEABILITY.
16. CONTRACTOR SUBMITTALS SHALL CONFORM TO ARTICLE 1.5 OF TMS 602/ACI 530.1/ASCE 6.
17. QUALITY ASSURANCE SHALL CONFORM TO LEVEL 'B' QUALITY ASSURANCE PER ARTICLE 1.6 OF TMS 602/ACI 530.1/ASCE 6. PERIODIC SPECIAL INSPECTION REQUIRED. CONTRACTOR SHALL CONTACT THE CITY FOR INSPECTIONS.
18. INTERLOCKING BLOCKS ARE AN ACCEPTABLE ALTERNATIVE.

APPROVED BY:  CITY ENGINEER R.P.E. 81734 09/16/16 DATE	CITY OF VISALIA DESIGN & IMPROVEMENT STANDARDS	
REFUSE CONTAINER ENCLOSURE NOTES	REVISIONS 09/08/16 BK 2016	R-8