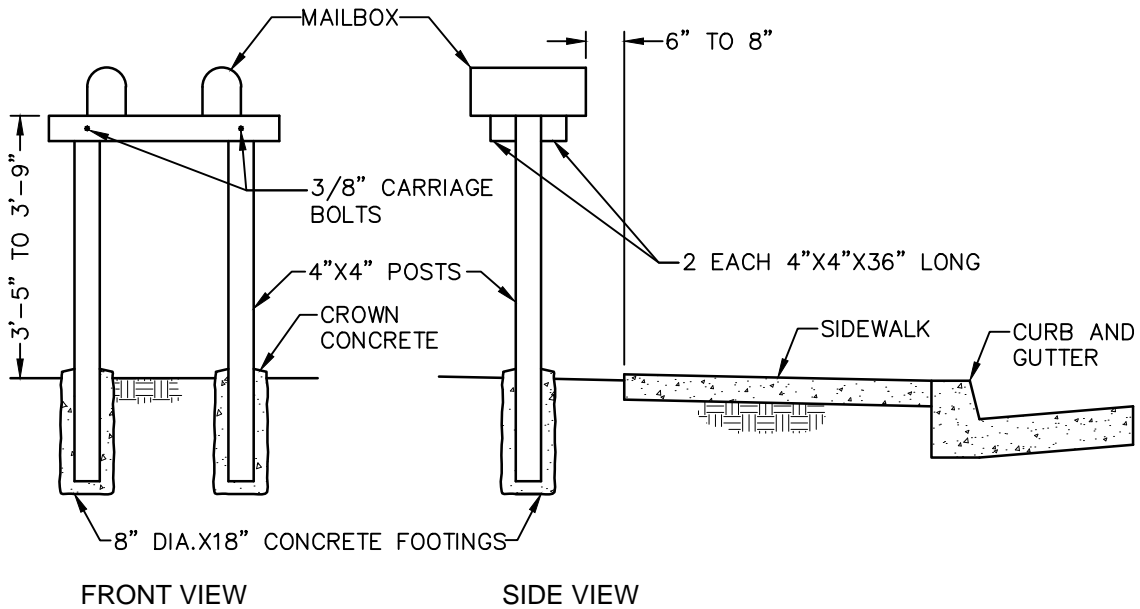


LOCATION WITH PARKWAY



LOCATION WITH ADJACENT SIDEWALK

NOTES:

1. MAILBOXES SHALL BE IN COLLECTIONS OF 2 MINIMUM TO 3 MAXIMUM.
2. MAILBOXES SHALL SERVE HOUSES ON ONE SIDE OF STREET ONLY.
3. HOMEOWNERS SHALL BE RESPONSIBLE FOR ALL MAINTENANCE AND REPAIR.
4. VERTICAL STACKING OF MAILBOXES IS NOT PERMITTED
5. ALL WOOD POSTS SHALL BE NO. 2 PRESSURE TREATED DOUGLAS FIR OR REDWOOD.

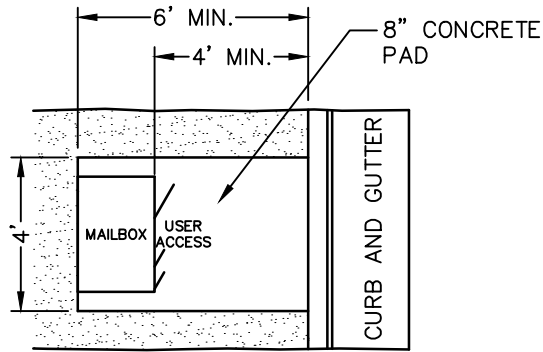
APPROVED BY: 
 CITY ENGINEER R.P.E. 81734 DATE 09/16/16

CITY OF VISALIA
 DESIGN & IMPROVEMENT STANDARDS

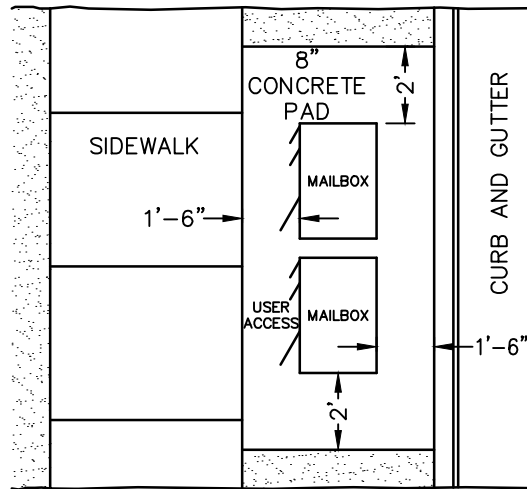
MAILBOX
 (INFILL & REPLACEMENT ONLY)

REVISIONS
 08/03/16
 BK 2016

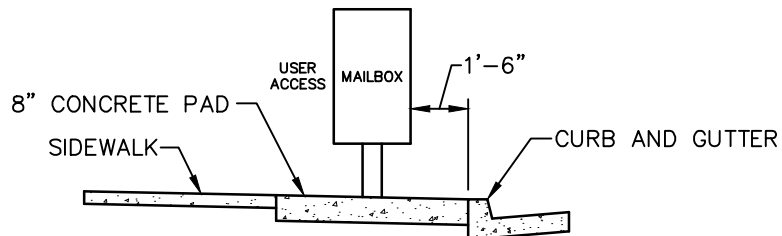
M-1



PLAN - SIDEWALK ADJACENT TO CURB (FRONT LOADING)



PLAN - WITH SIDEWALK



SECTION - WITH SIDEWALK

NOTES:

1. ALL MAILBOX CLUSTER DESIGNS SHALL BE APPROVED BY THE UNITED STATES POSTAL SERVICE PRIOR TO INSTALLATION.
2. CONCRETE PAD SHALL BE CONSTRUCTED PER UNITED STATES POSTAL SERVICE SPECIFICATIONS FOR SINGLE UNIT AND MULTIPLE UNITS.
3. MAILBOX CLUSTER SHALL BE ACCESSIBLE PER ADA REQUIREMENTS.

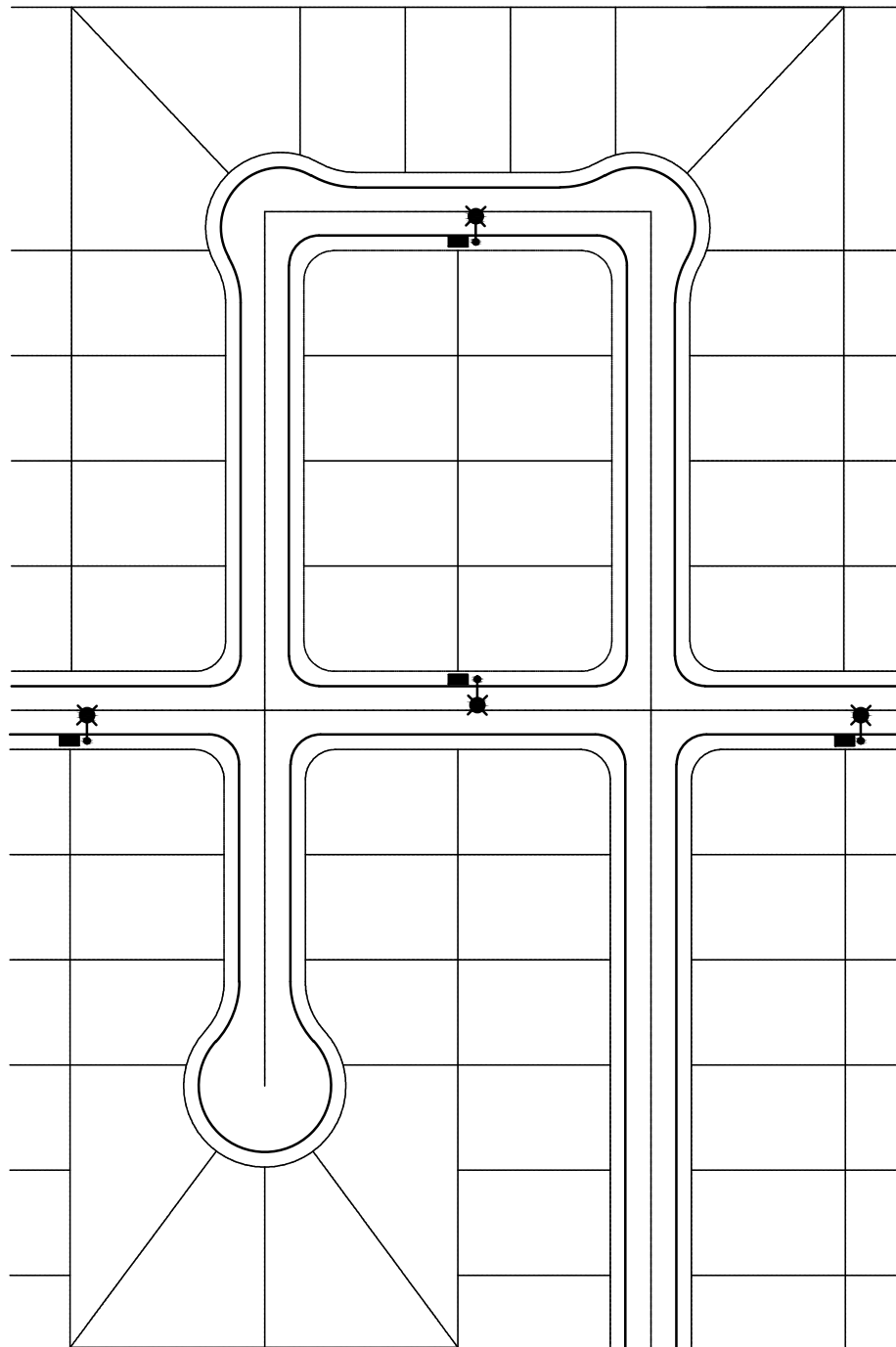
APPROVED BY: 
 CITY ENGINEER R.P.E. 81734 DATE 09/16/16

CITY OF VISALIA
 DESIGN & IMPROVEMENT STANDARDS

MAILBOX CLUSTER

REVISIONS
 08/03/16
 BK 2016

M-2



■ TYPICAL MAILBOX CLUSTER LOCATION

NOTES:

1. MAILBOX CLUSTER LOCATIONS SHALL HAVE A STREET LIGHT LOCATED WITHIN TEN FEET OF THE CLUSTER CONCRETE PAD. ALTERNATE LIGHTING MAY BE SUPPLIED (I.E. SOLAR) WITH CITY ENGINEER APPROVAL.
2. ALL MAILBOX CLUSTER LOCATIONS SHALL BE APPROVED BY THE UNITED STATES POSTAL SERVICE.

APPROVED BY: *[Signature]* 09/16/16
 CITY ENGINEER R.P.E. 81734 DATE

CITY OF VISALIA
 DESIGN & IMPROVEMENT STANDARDS

TYPICAL MAILBOX CLUSTER LOCATIONS

REVISIONS
 04/29/16
 BK 2016

M-3