



Chapter 11A – California Building Code
HOUSING ACCESSIBILITY

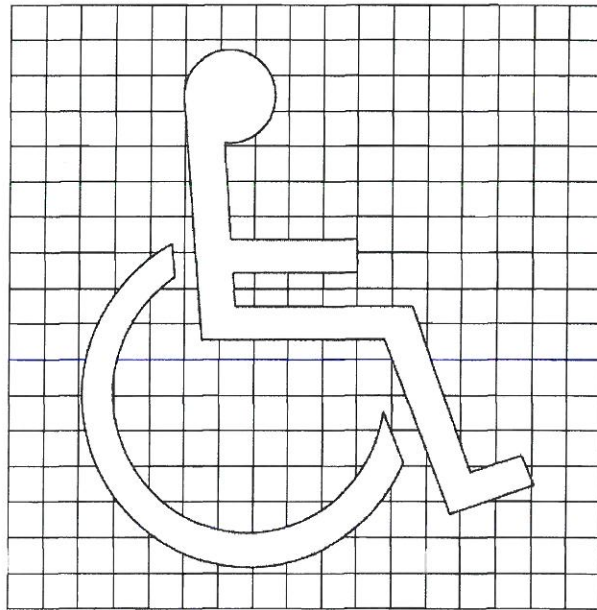
Figures 11A-1A through 11A-11E provided in this document for reference only, shall apply to the following section and others listed in Chapter 11A of the California Building Code.

Section: 1101A.1

1. All newly-constructed covered multifamily dwellings.
2. New common use spaces servicing existing covered multifamily dwellings.
3. Additions to existing buildings, where the addition alone meets the definition of a covered multifamily dwelling.
4. Common-use areas serving covered multifamily dwellings.
5. Where any portion of a building's exterior is preserved, but the interior of the building is removed, including all structural portions of floors and ceilings, the building is considered a new building for determining the application of this chapter.

Division VII – FIGURES

Diagrams illustrate the specific requirements of these regulations and are intended only as an aid for building design and construction. Diagrams are not to scale.



(a) SYMBOL PROPORTIONS



(b) DISPLAY CONDITIONS

**FIGURE 11A-1A
INTERNATIONAL ACCESSIBILITY SYMBOL**

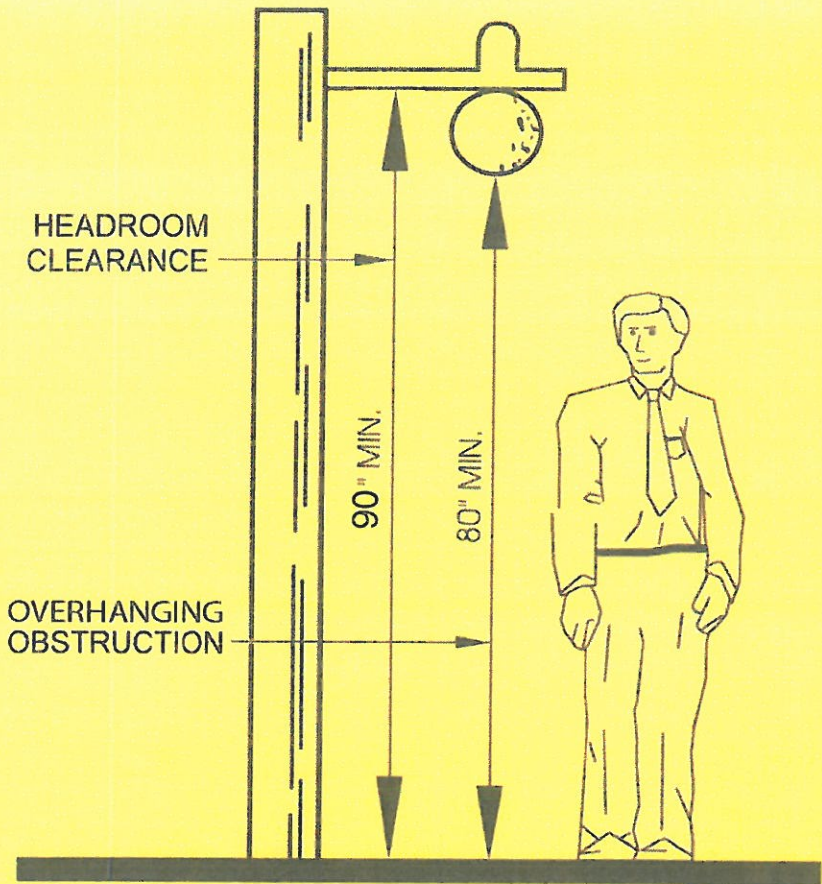
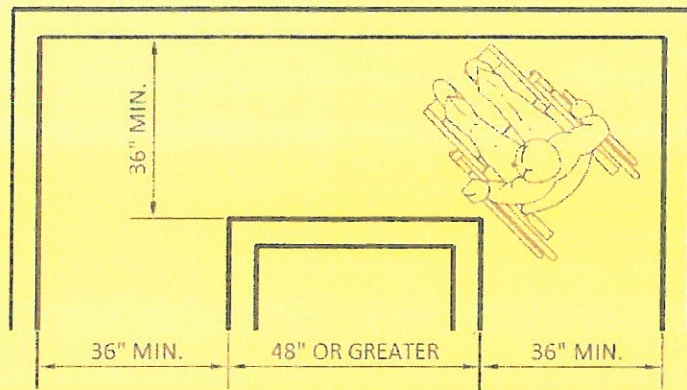
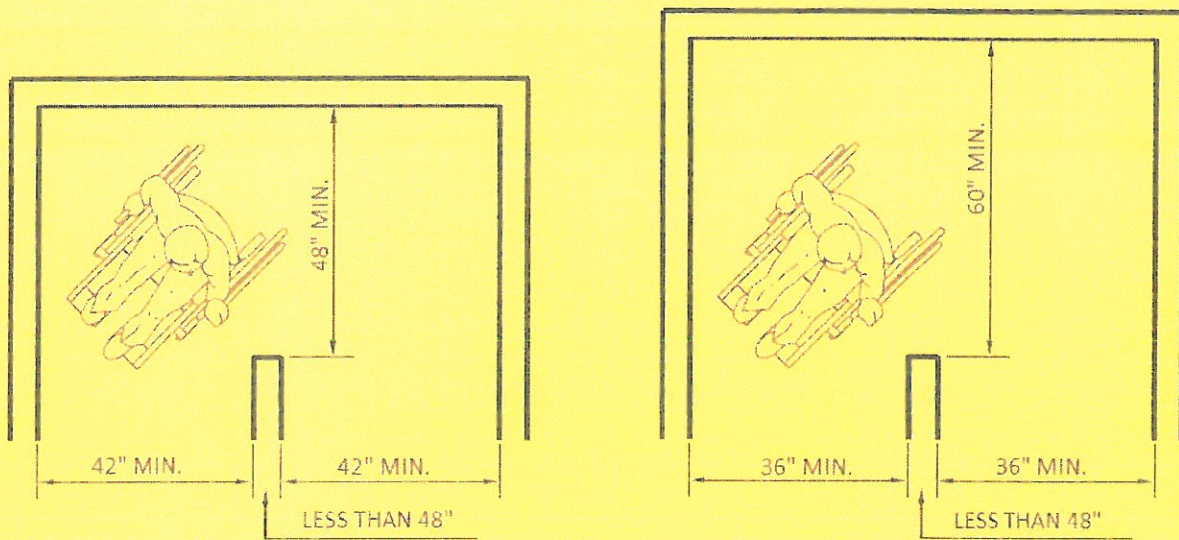


FIGURE 11A-1B
HEADROOM CLEARANCE AND OVERHANGING OBSTRUCTION

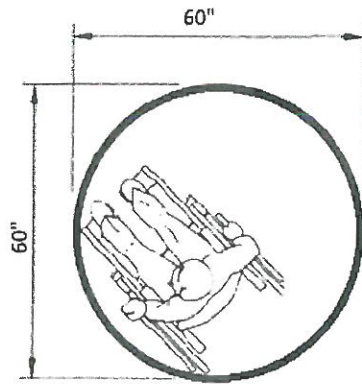


(a) 90° TURN AROUND OBSTRUCTION

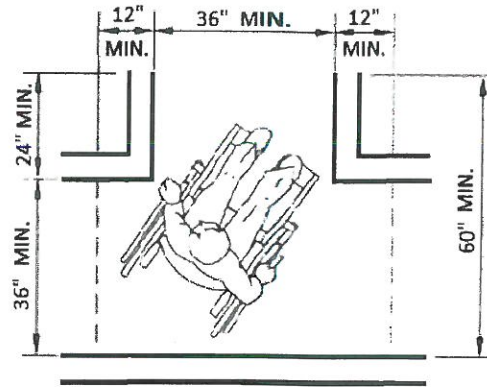


(b) 180° TURN AROUND OBSTRUCTION

FIGURE 11A-1C
WIDTH OF ACCESSIBLE ROUTE AT TURNS

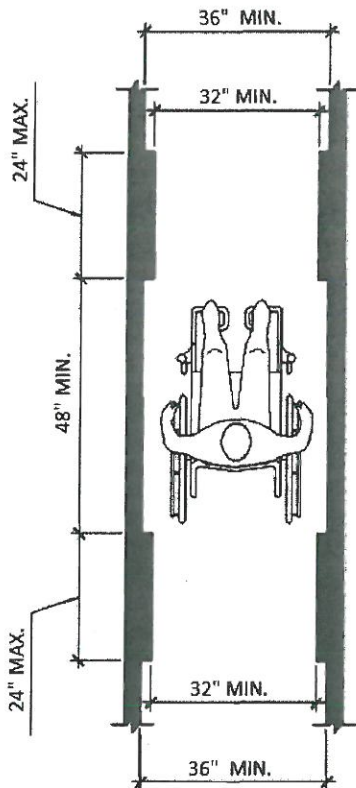


(a) 60 INCHES DIAMETER SPACE

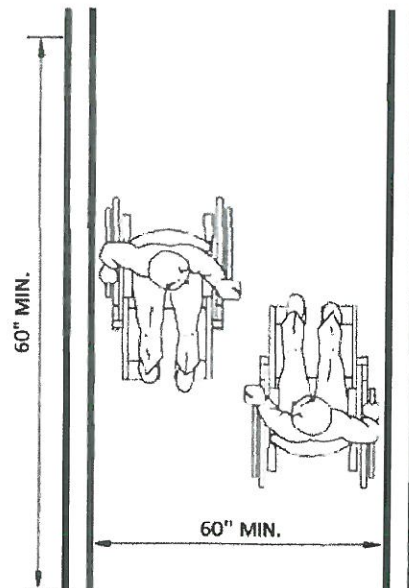


(b) T-SHAPED SPACE FOR 180 ° TURN

FIGURE 11A-1D
WHEELCHAIR TURNING SPACE

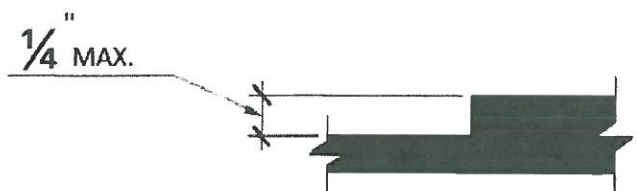


MINIMUM CLEAR WIDTH FOR SINGLE WHEELCHAIR

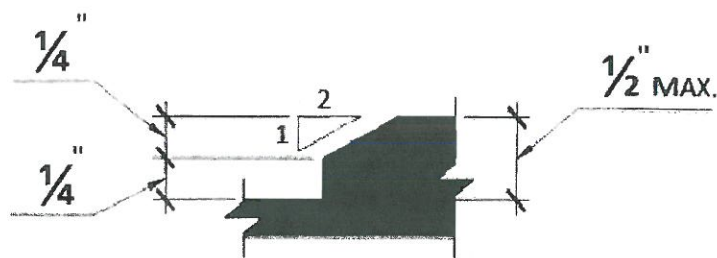


MINIMUM CLEAR WIDTH FOR TWO WHEELCHAIRS

FIGURE 11A-1E
WHEELCHAIR PASSAGE WIDTH

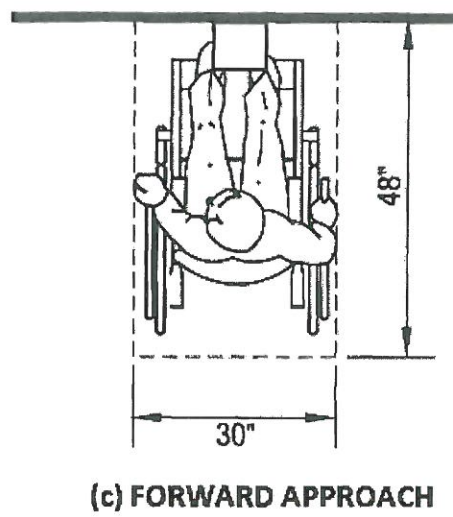
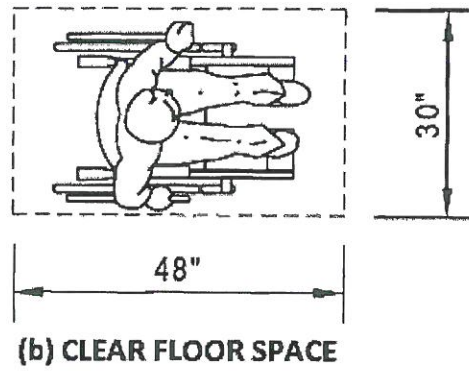
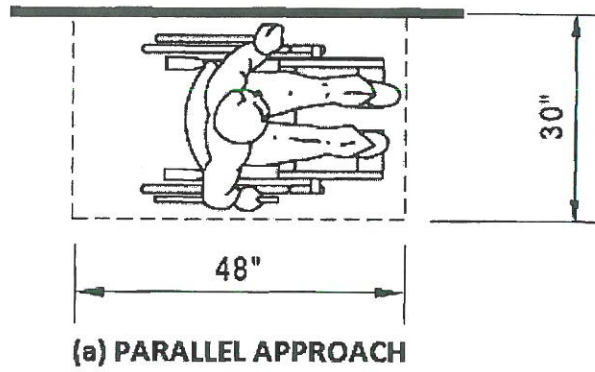


(a) VERTICAL CHANGE IN LEVEL



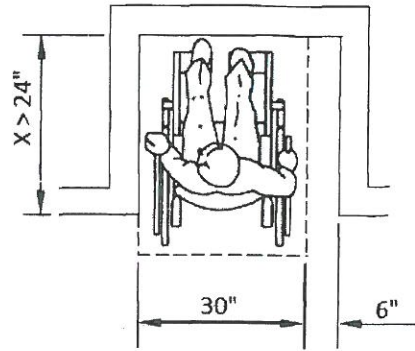
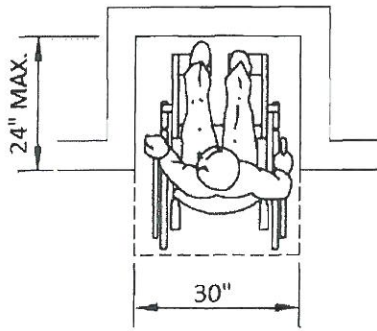
(b) BEVELED CHANGE IN LEVEL

FIGURE 11A-1F
CHANGE IN LEVEL



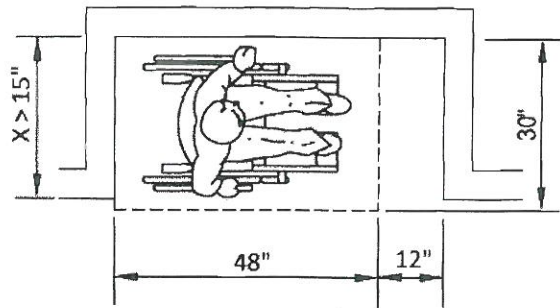
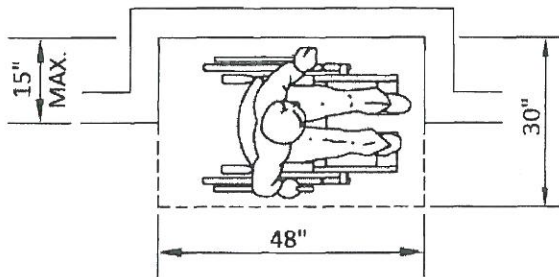
**FIGURE 11A-1G
MINIMUM CLEAR FLOOR SPACE FOR WHEELCHAIRS**

HOUSING ACCESSIBILITY



IF $X > 24"$, ADDITIONAL MANEUVERING CLEARANCE OF 6" SHALL BE PROVIDED.

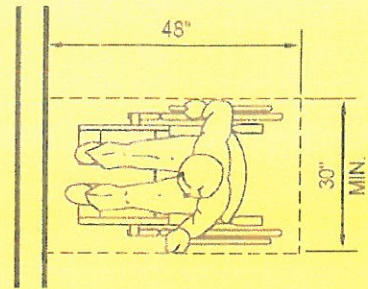
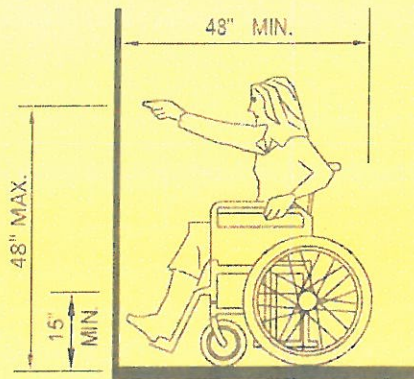
(a) FORWARD APPROACH



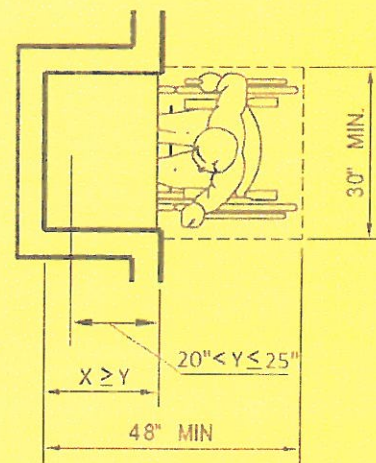
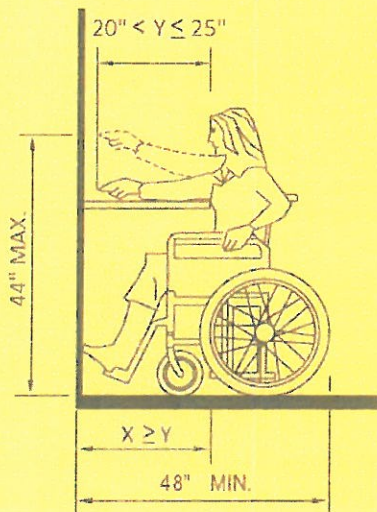
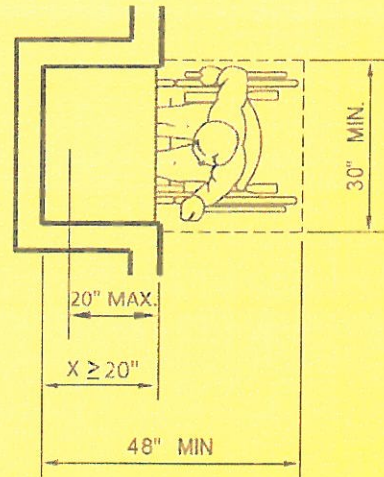
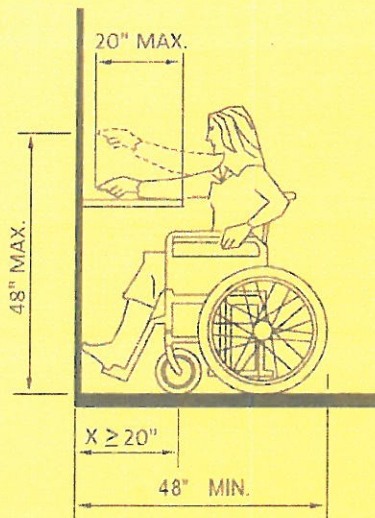
IF $X > 15"$, ADDITIONAL MANEUVERING CLEARANCE OF 12" SHALL BE PROVIDED.

(b) PARALLEL APPROACH

FIGURE 11A-1H
MINIMUM CLEAR FLOOR SPACE IN ALCOVES

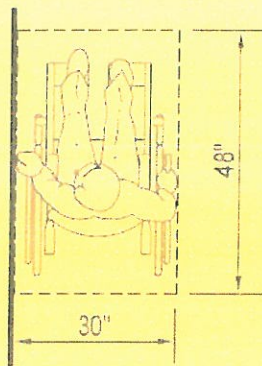


(a) UNOBSTRUCTED FORWARD REACH

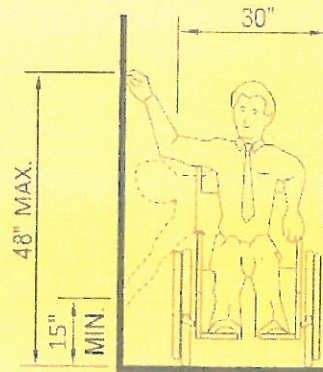


(b) FORWARD REACH OVER OBSTRUCTION

FIGURE 11A-11
FORWARD REACH

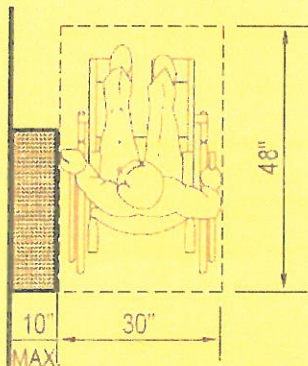


CLEAR FLOOR SPACE FOR PARALLEL APPROACH

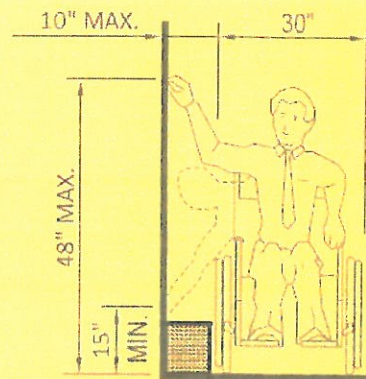


HIGH AND LOW SIDE REACH LIMITS

(a) UNOBSTRUCTED SIDE REACH

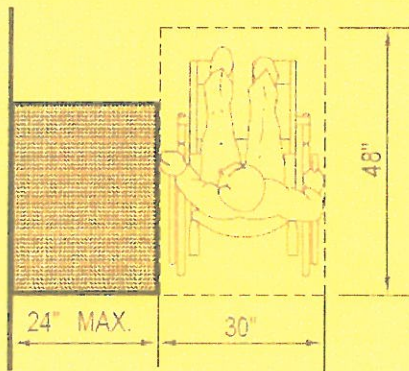


CLEAR FLOOR SPACE FOR PARALLEL APPROACH

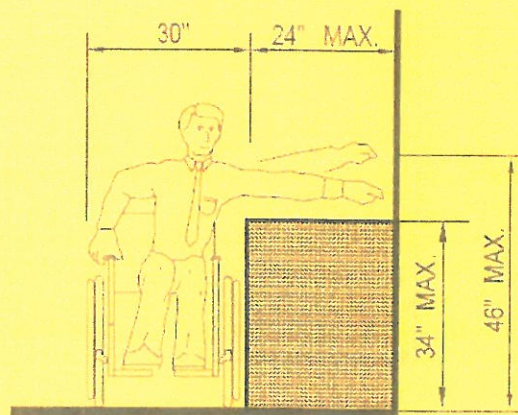


HIGH AND LOW SIDE REACH LIMITS

(b) SIDE REACH OVER OBSTRUCTION 10" MAXIMUM



CLEAR FLOOR SPACE FOR PARALLEL APPROACH



MAXIMUM SIDE REACH OVER OBSTRUCTION

(c) SIDE REACH OVER OBSTRUCTION > 10" AND 24" MAXIMUM

FIGURE 11A-1J
SIDE REACH

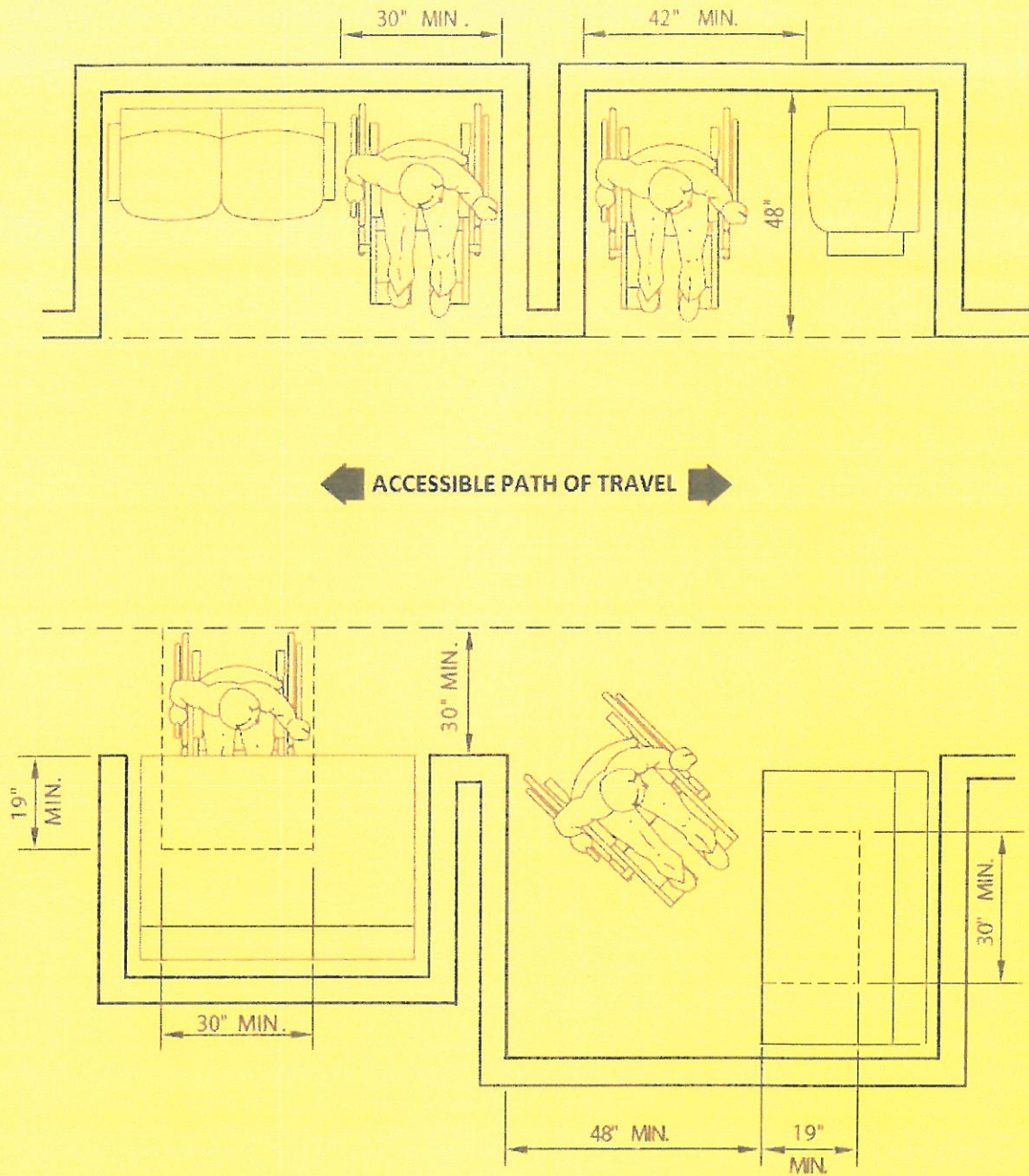
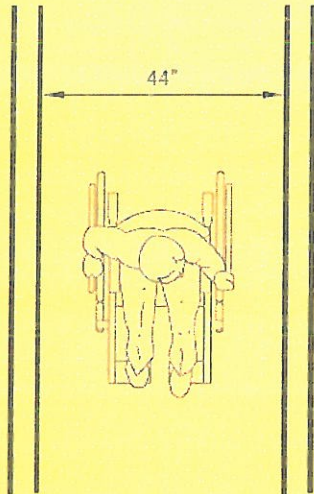
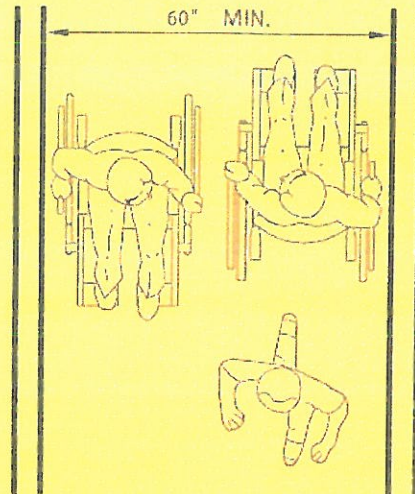


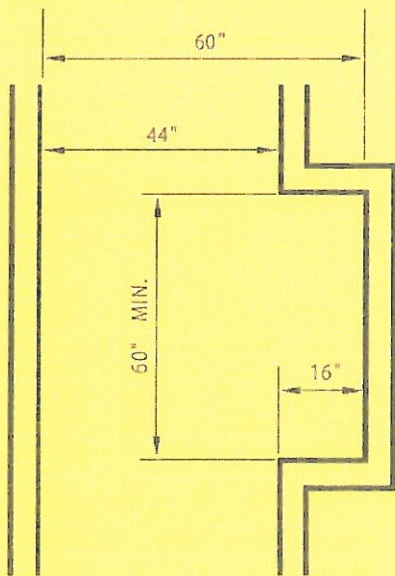
FIGURE 11A-1K
MINIMUM CLEARANCES FOR SEATING AND TABLE



(a) MINIMUM WIDTH FOR CORRIDORS



(b) MINIMUM WIDTH FOR CORRIDORS OVER 200 FEET



(c) PASSING METHODS FOR CORRIDORS WITH LENGTH OVER 200 FEET AND WIDTH LESS THAN 60"

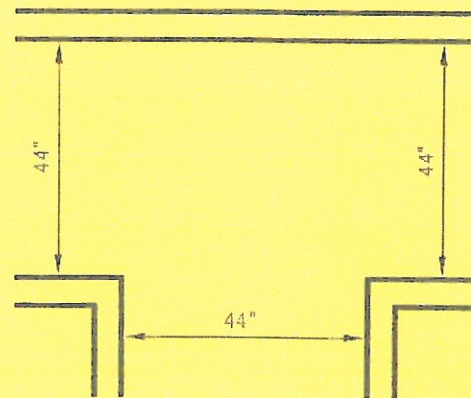
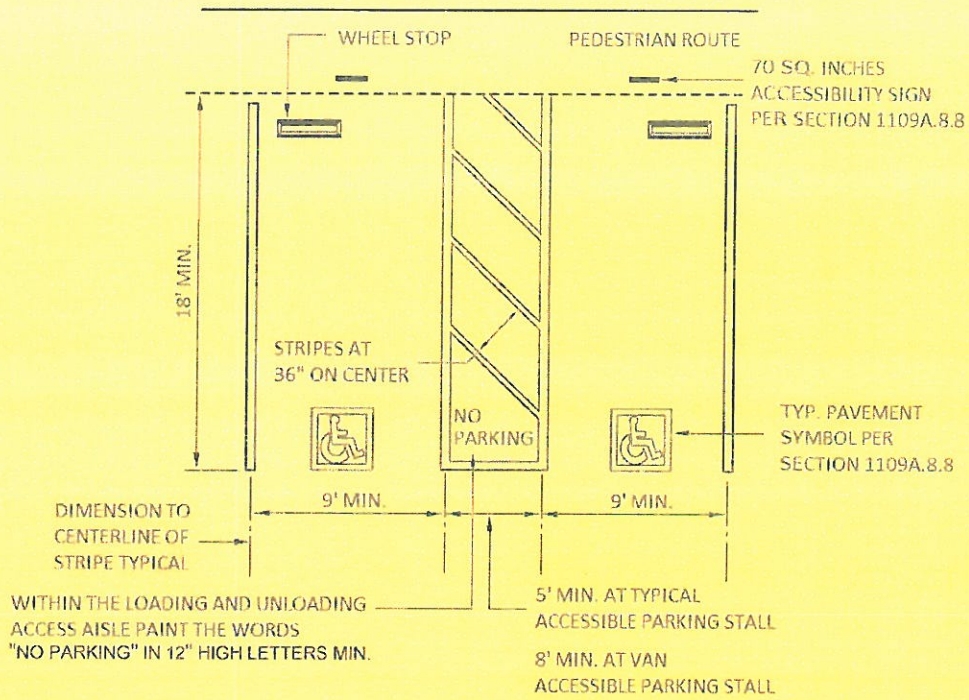
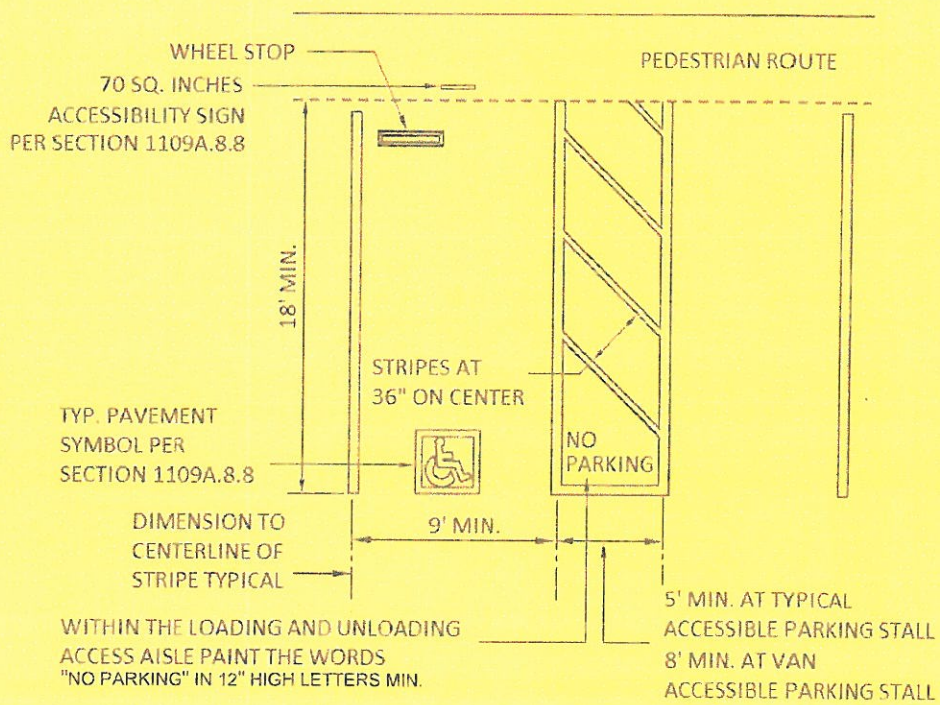


FIGURE 11A-1L
INTERIOR ACCESSIBLE ROUTE (CORRIDOR) OVER 200 FEET; OCCUPANT LOAD 10 OR MORE



**FIGURE 11A-2A
DOUBLE PARKING STALLS**



**FIGURE 11A-2B
SINGLE AND VAN ACCESSIBLE PARKING STALLS**

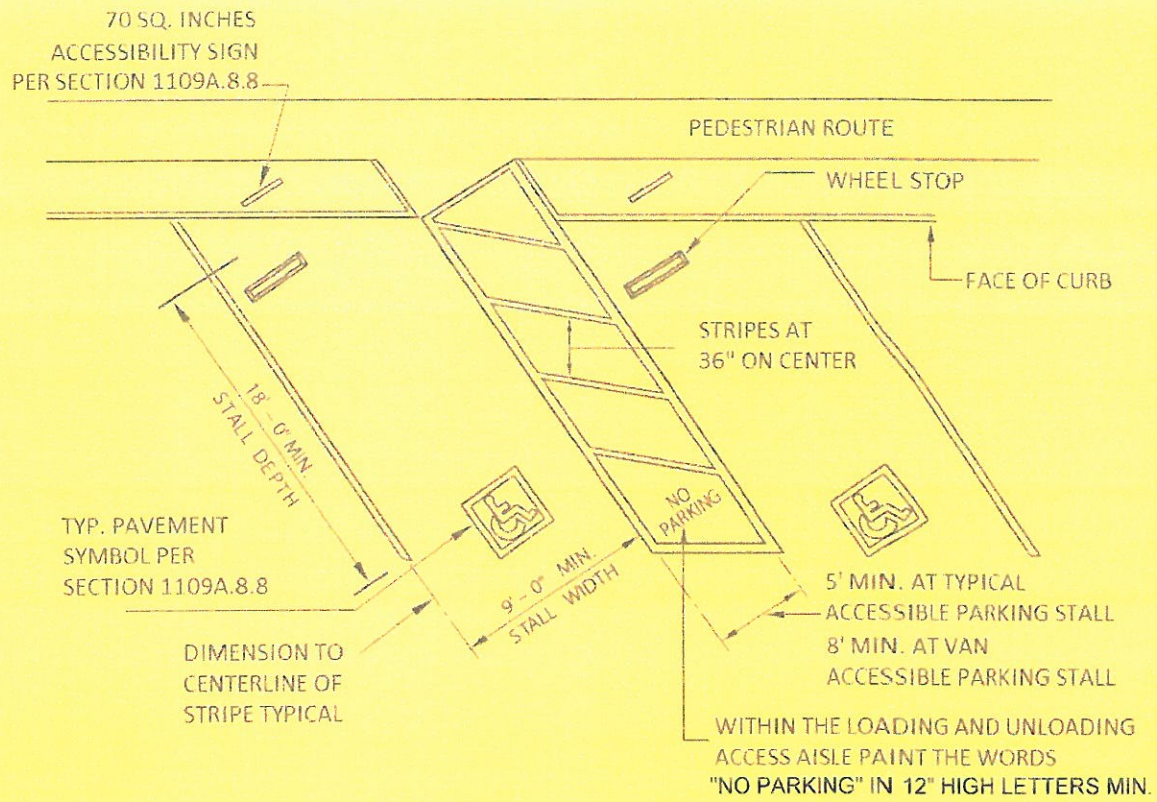
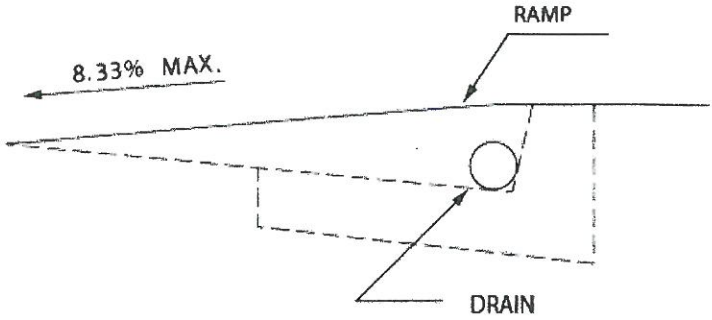
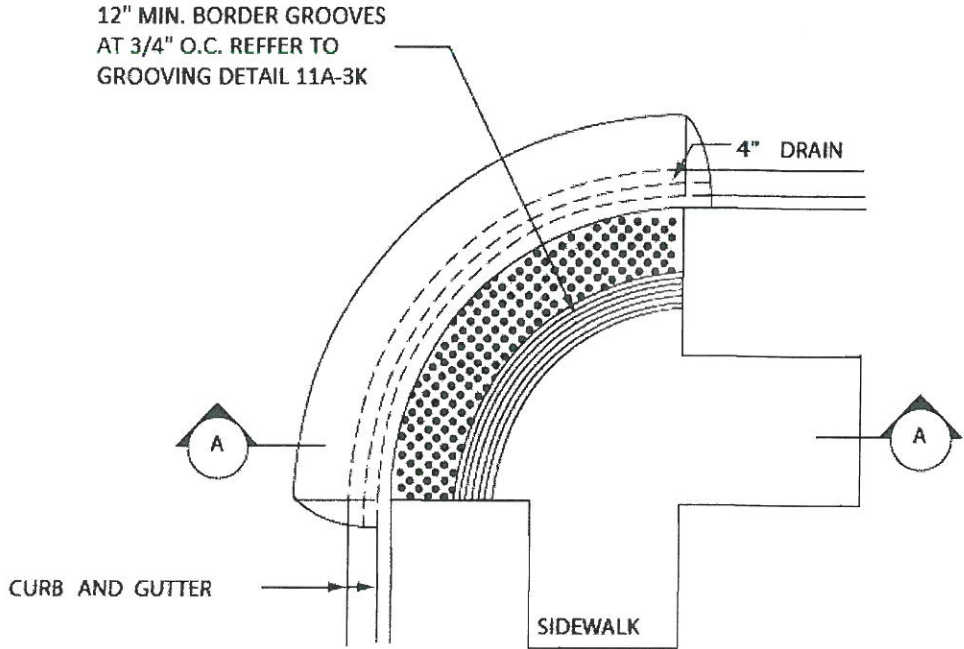


FIGURE 11A-2C
DIAGONAL PARKING STALLS



SECTION A-A

FIGURE 11A-3A
CURB DETAILS

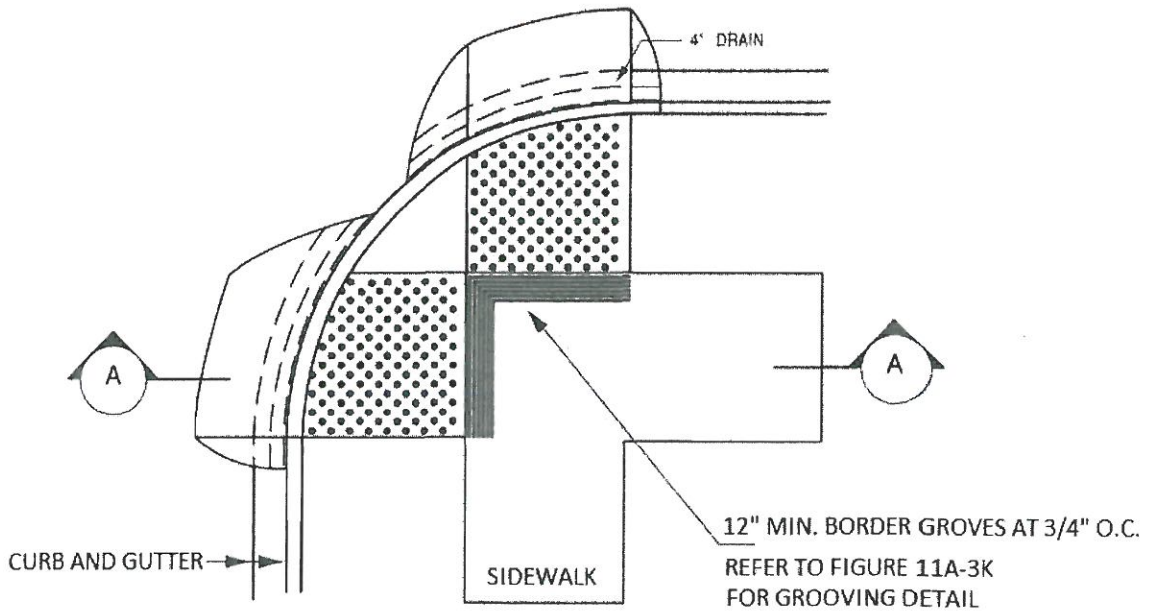
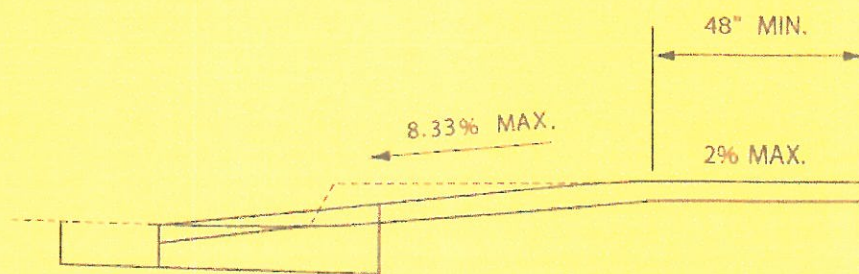
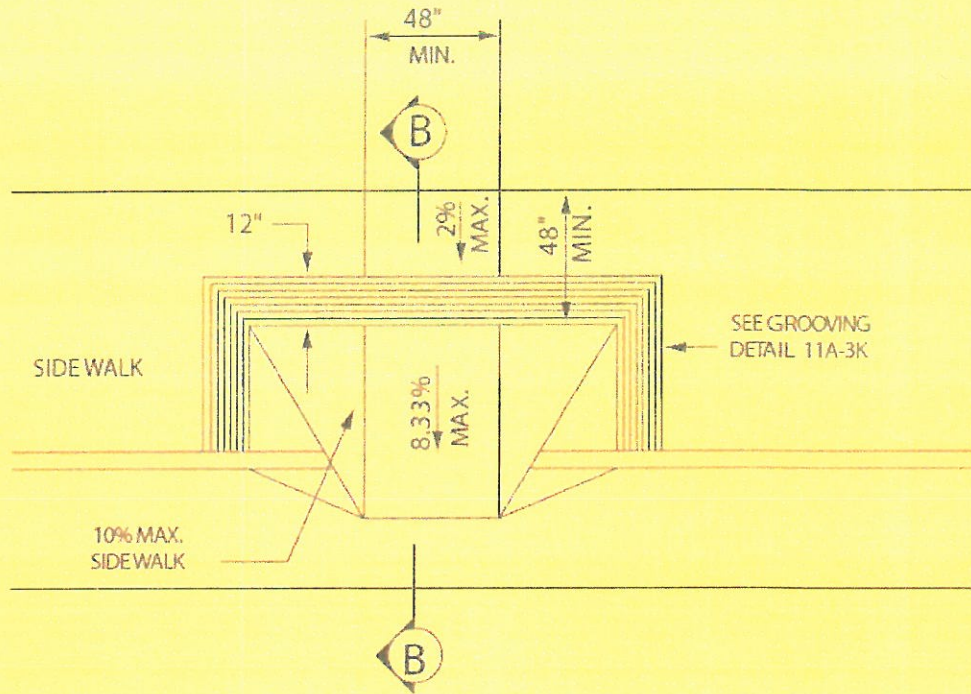
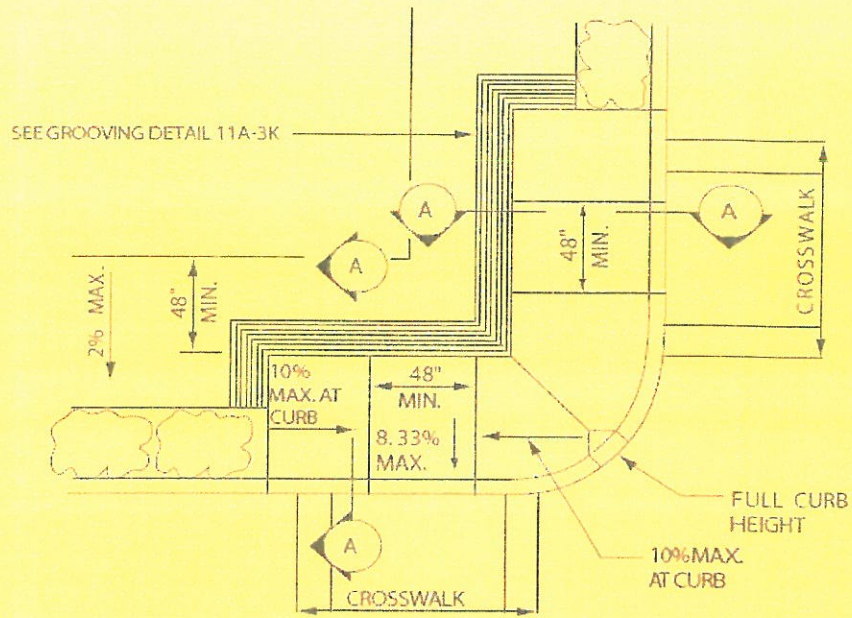


FIGURE 11A-3B
CURB DETAIL

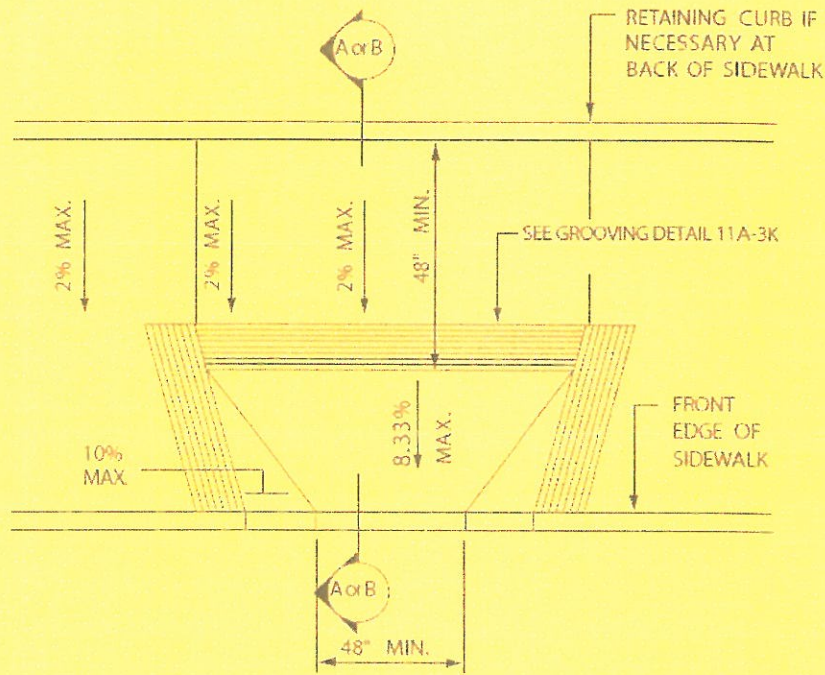


SECTION B-B

FIGURE 11A-3C
CURB DETAIL



**FIGURE 11A-3D
CURB DETAIL**



**FIGURE 11A-3E
CURB DETAIL**

This page left intentionally blank.

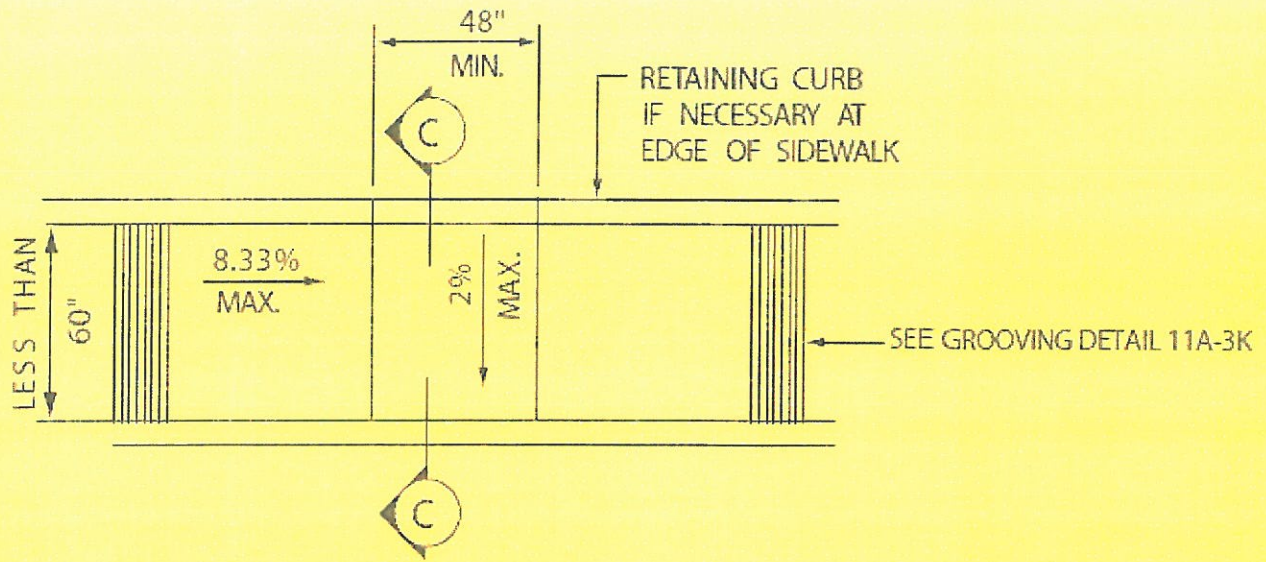


FIGURE 11A-3F
CURB DETAIL - SIDEWALK LESS THAN 60" WIDE

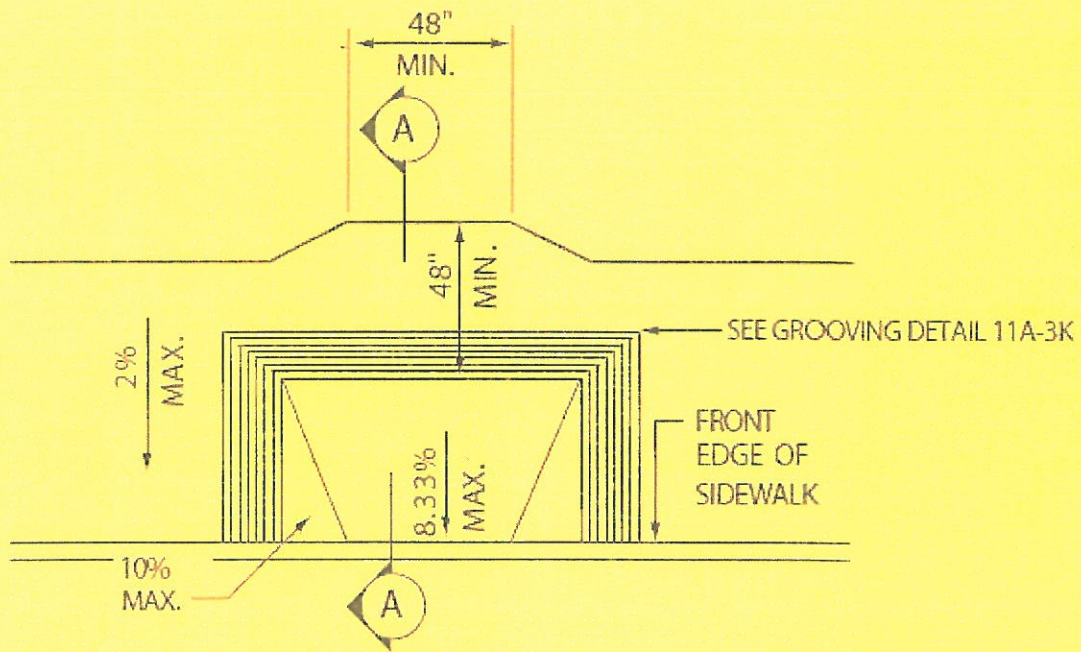


FIGURE 11A-3G
CURB DETAIL

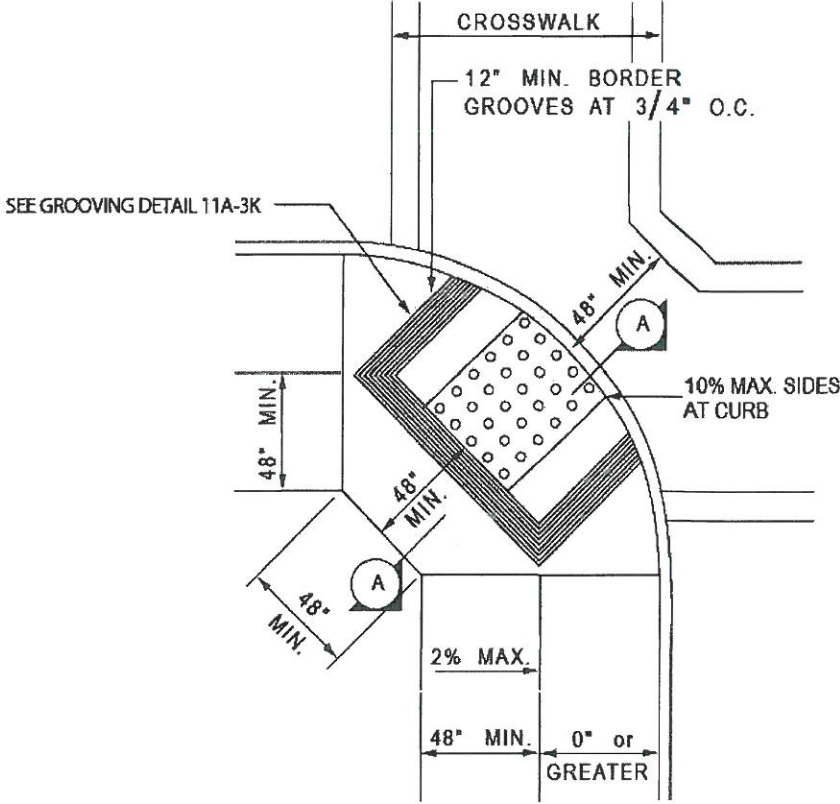


FIGURE 11A-3H CURB DETAIL

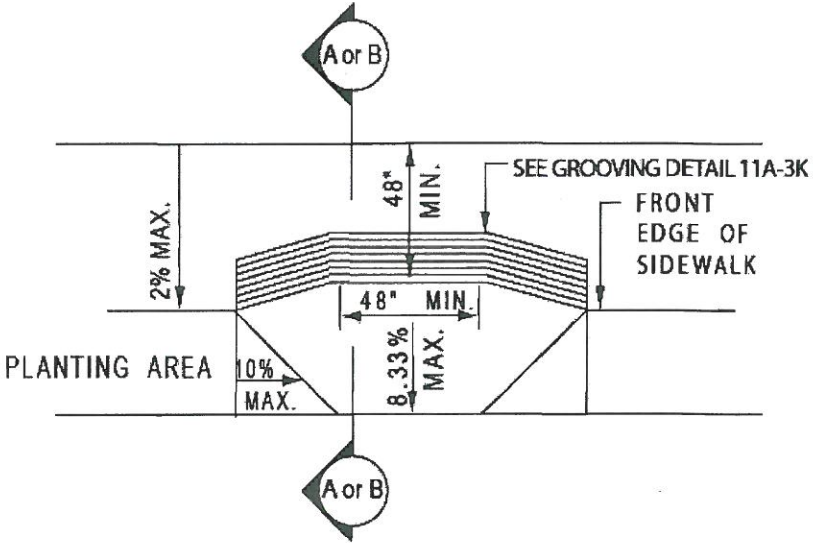


FIGURE 11A-3I CURB DETAIL

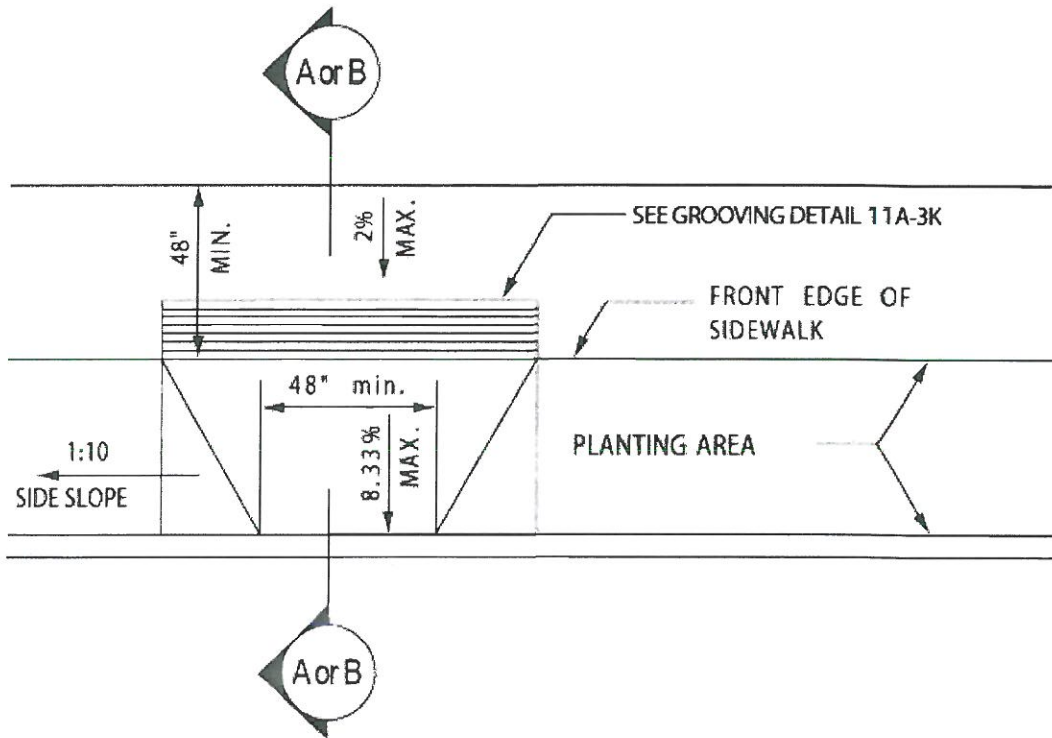
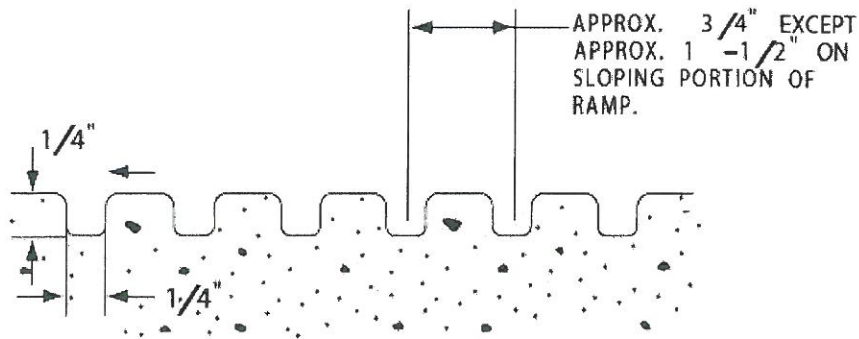
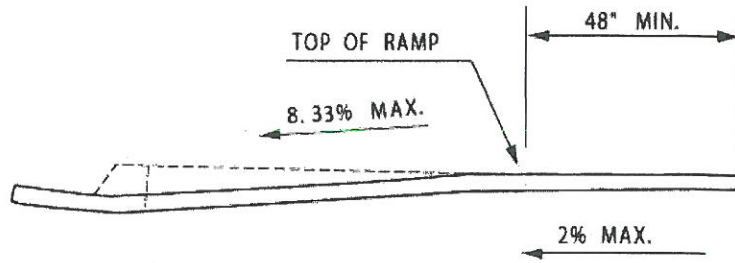


FIGURE 11A-3J
CURB DETAIL

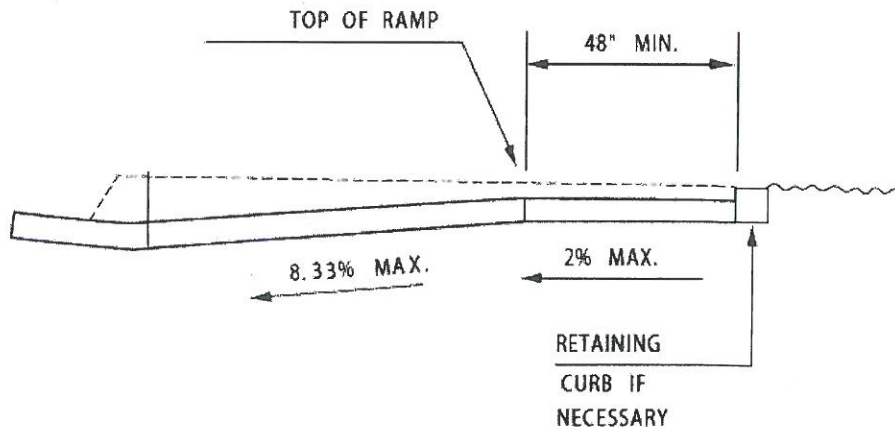


GROOVING DETAIL

FIGURE 11A-3K
CURB DETAIL

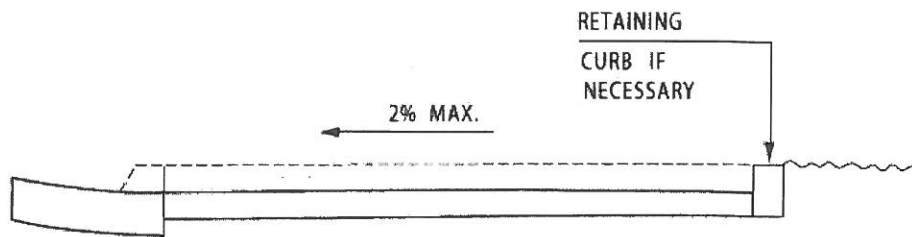


SECTION A-A



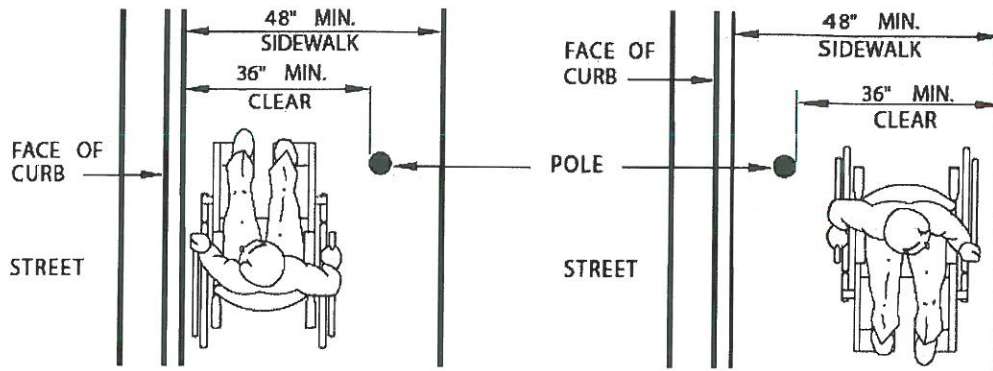
SECTION B-B

DEPRESS ENTIRE SIDEWALK AS REQUIRED

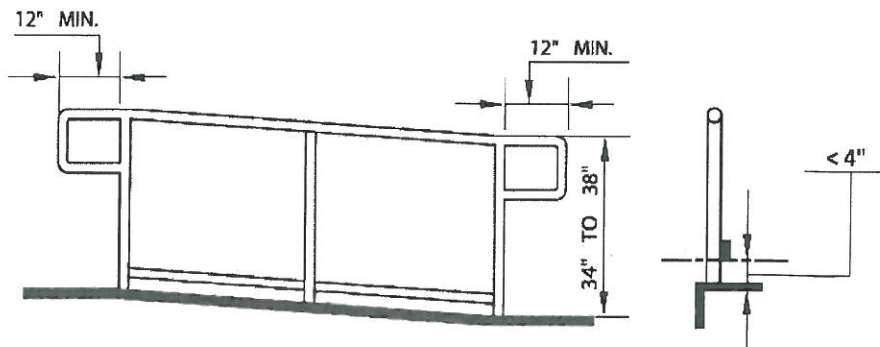


SECTION C-C

FIGURE 11A-3L
CURB SECTIONS

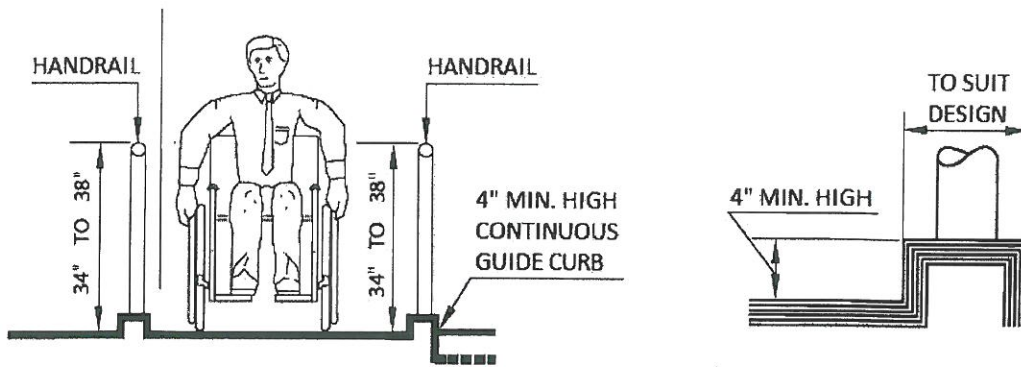


(a) SIDEWALK OBSTRUCTIONS



(b) HANDRAIL AND GUIDERAIL

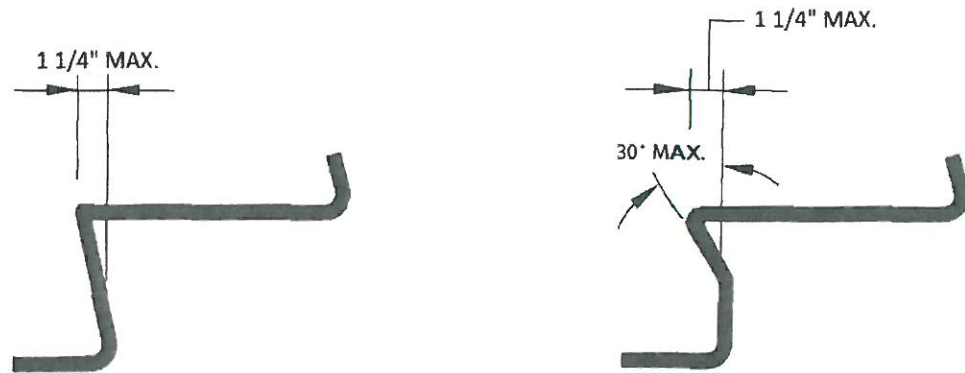
GUIDE RAIL DETAIL



(c) GUIDE CURB

GUIDE CURB DETAIL

FIGURE 11A-5A
RAMPS AND SIDEWALKS



STAIRS

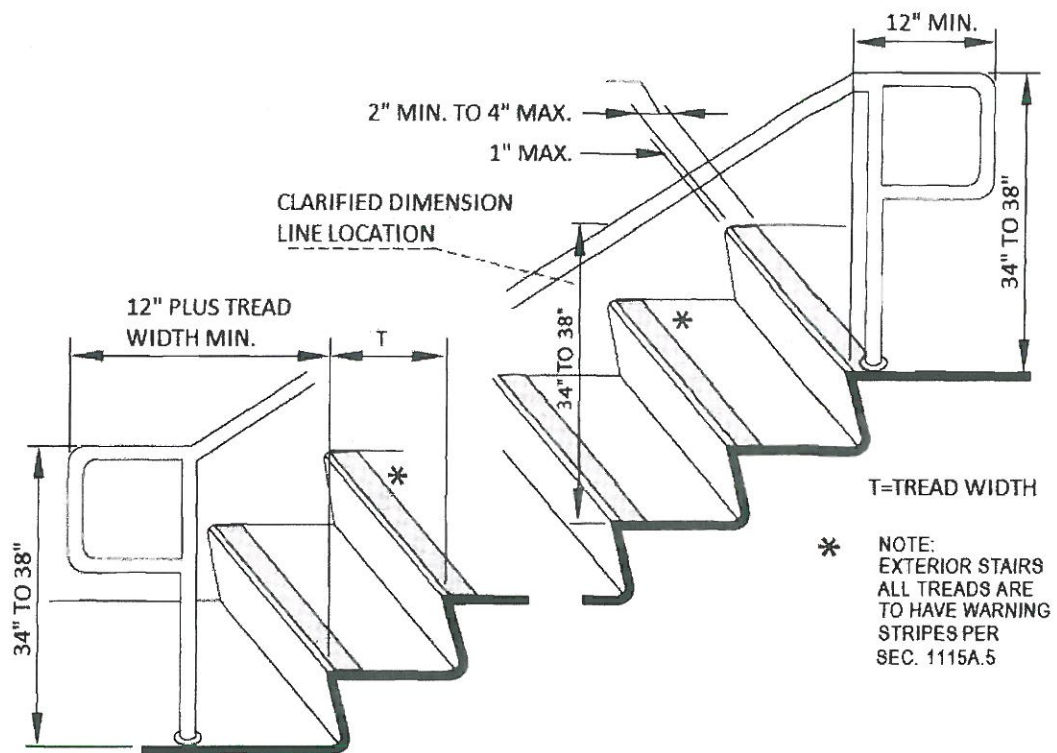


FIGURE 11A-6A
WARNING STRIPING AND HANDRAIL EXTENSIONS

HOUSING ACCESSIBILITY

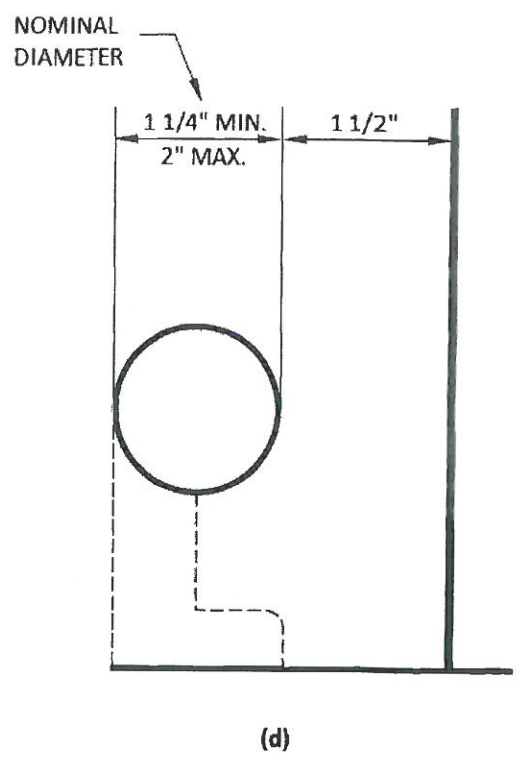
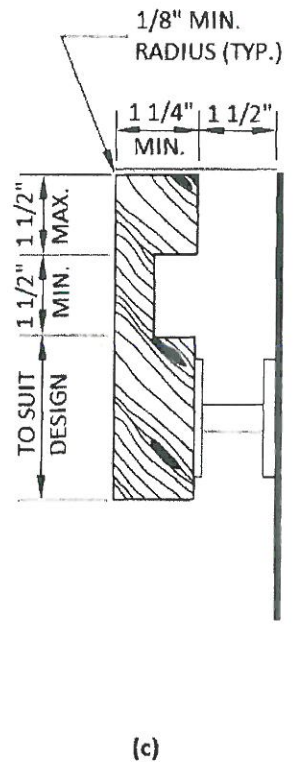
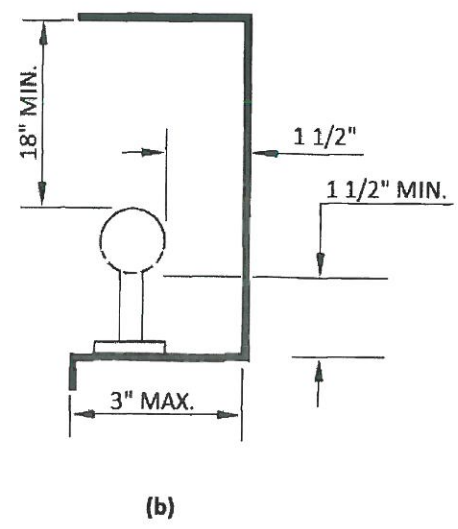
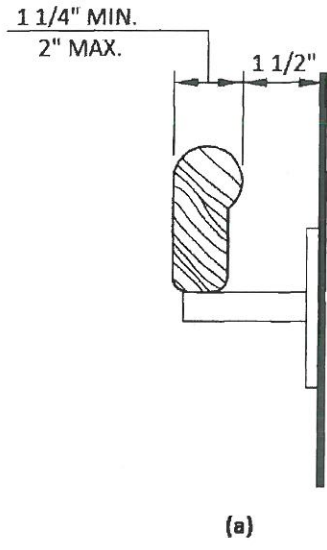
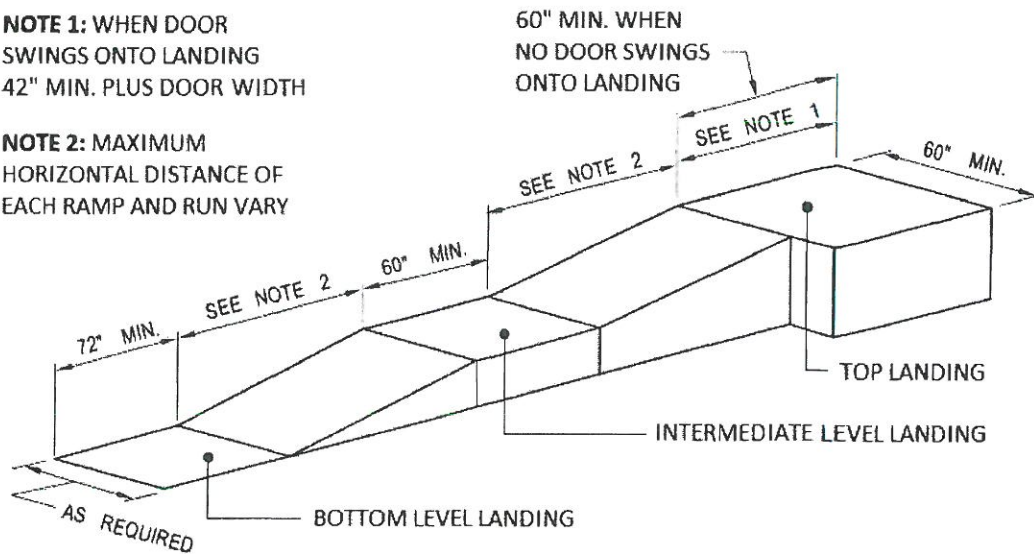


FIGURE 11A-6B
STAIR HANDRAILS

NOTE 1: WHEN DOOR SWINGS ONTO LANDING
42" MIN. PLUS DOOR WIDTH

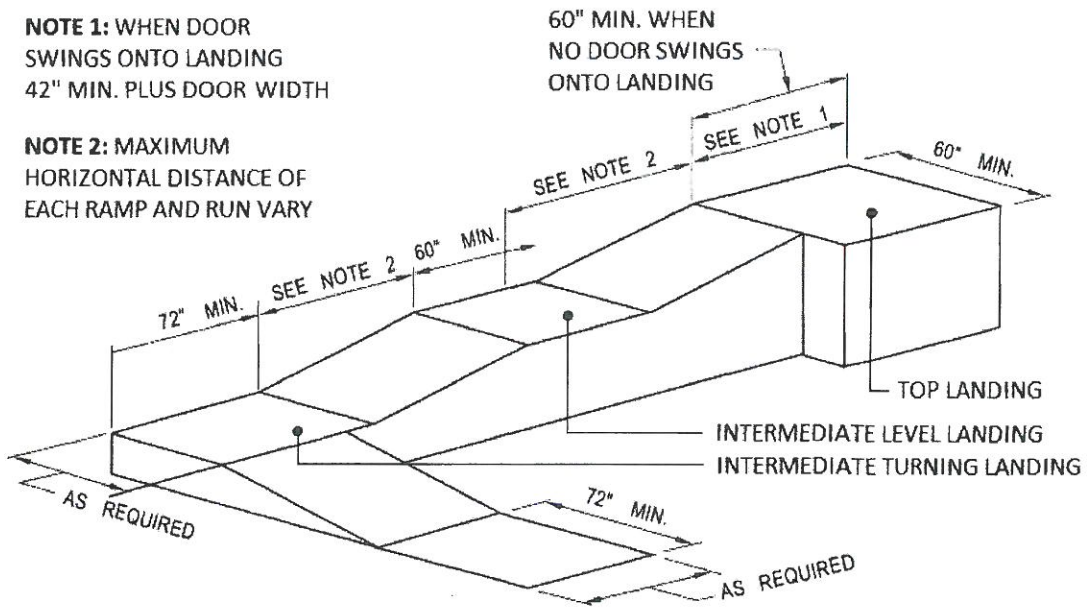
NOTE 2: MAXIMUM HORIZONTAL DISTANCE OF EACH RAMP AND RUN VARY



(a) STRAIGHT RAMP RUN

NOTE 1: WHEN DOOR SWINGS ONTO LANDING
42" MIN. PLUS DOOR WIDTH

NOTE 2: MAXIMUM HORIZONTAL DISTANCE OF EACH RAMP AND RUN VARY



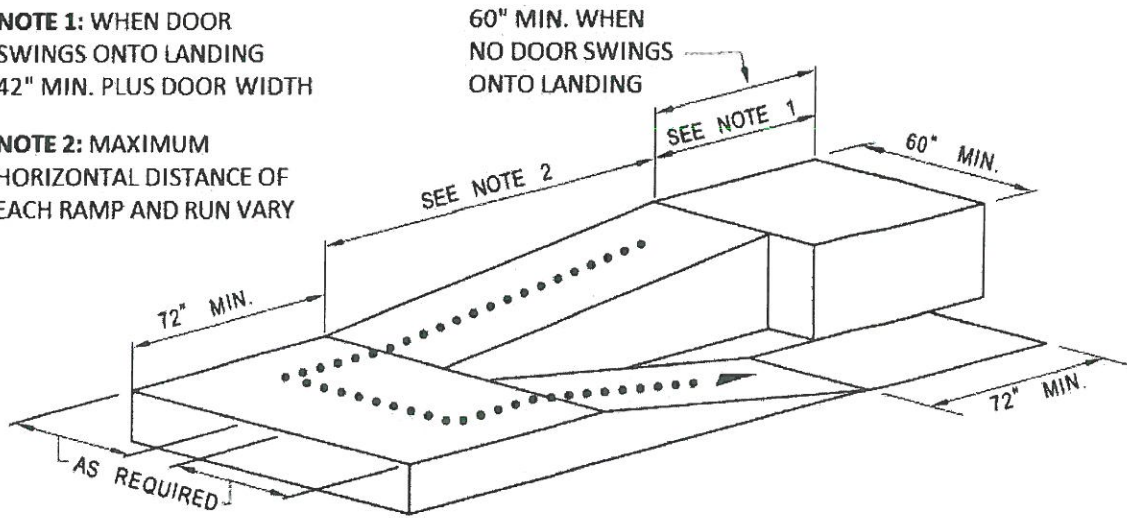
(b) RAMP WITH TURNING LANDING

**FIGURE 11A-6C
RAMP DIMENSIONS**

NOTE 1: WHEN DOOR SWINGS ONTO LANDING
42" MIN. PLUS DOOR WIDTH

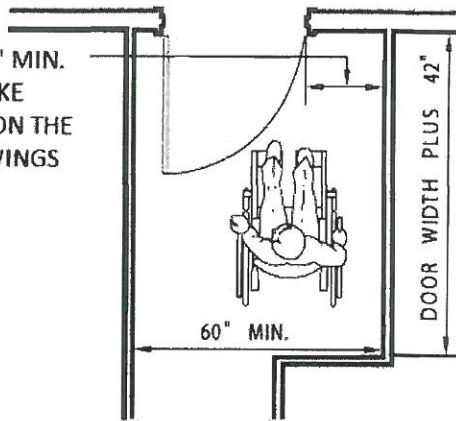
60" MIN. WHEN NO DOOR SWINGS ONTO LANDING

NOTE 2: MAXIMUM HORIZONTAL DISTANCE OF EACH RAMP AND RUN VARY



(a) RAMP WITH INTERMEDIATE SWITCH BACK LANDING

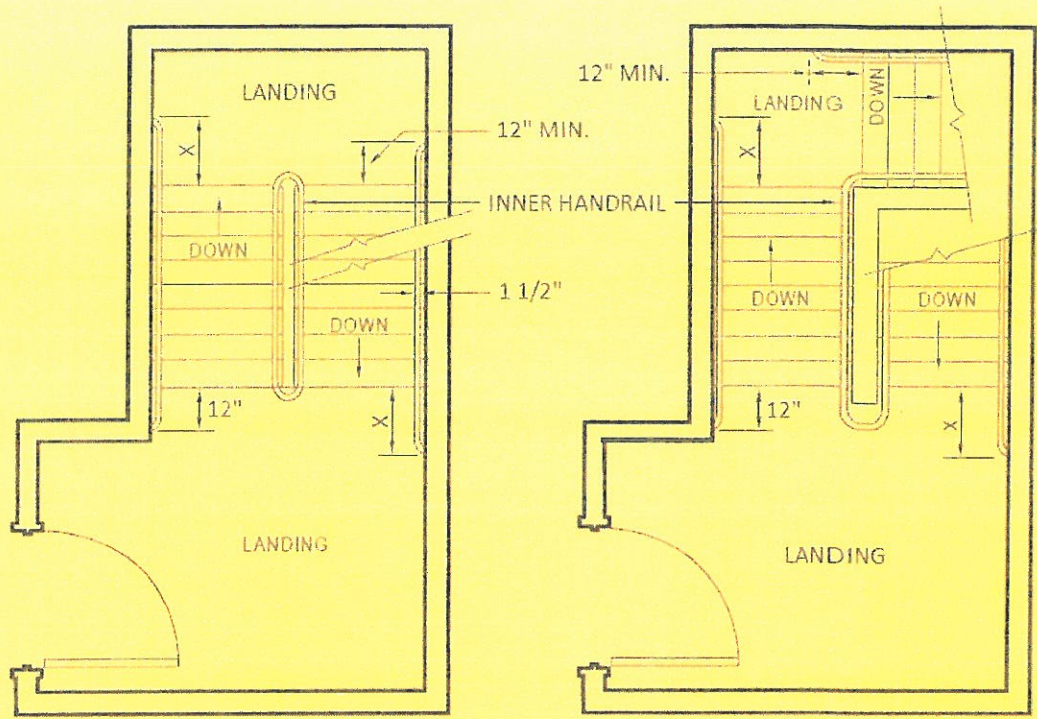
24" MIN. EXTERIOR AND 18" MIN. INTERIOR BEYOND THE STRIKE EDGE OF A GATE OR DOOR ON THE SIDE TOWARD WHICH IT SWINGS



(b) RAMP LANDING AT DOORWAY

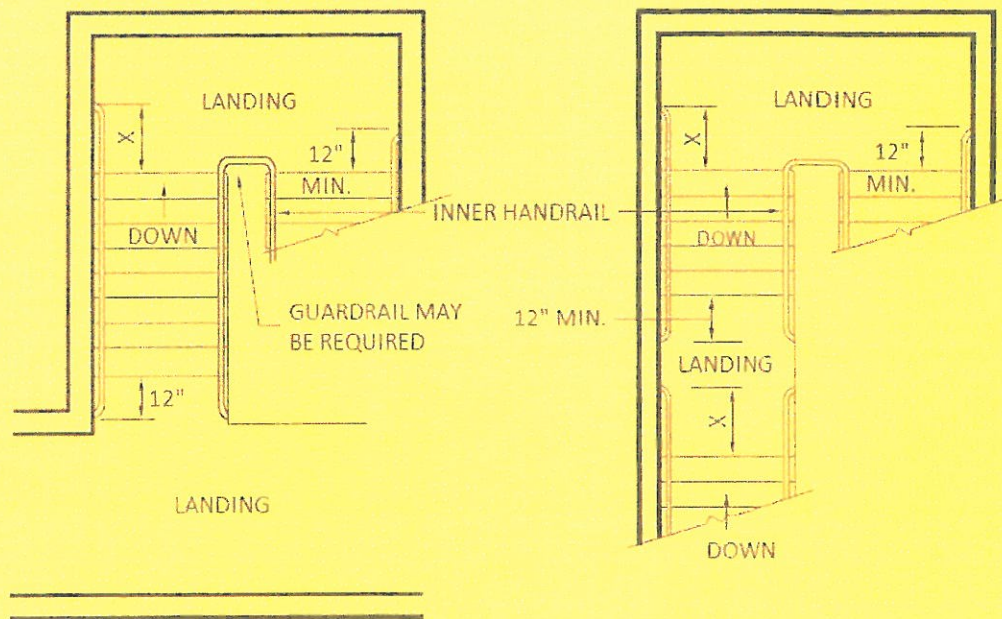
**FIGURE 11A-6D
RAMP LANDING AND DOORWAY**

Text and Figures continue on page 488

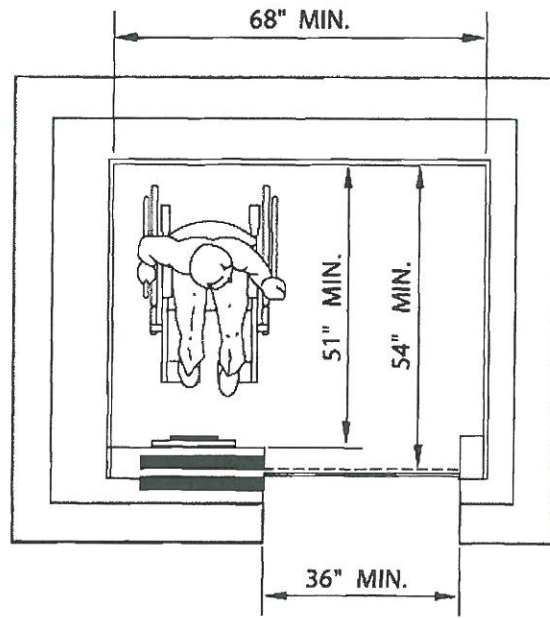


NOTE: INNER HANDRAIL AT LANDINGS OF STAIRS THAT DOUBLE BACK OR IMMEDIATELY TURN SHALL BE CONTINUOUS AND SHALL NOT EXTEND INTO LANDING OR PATH OF TRAVEL.

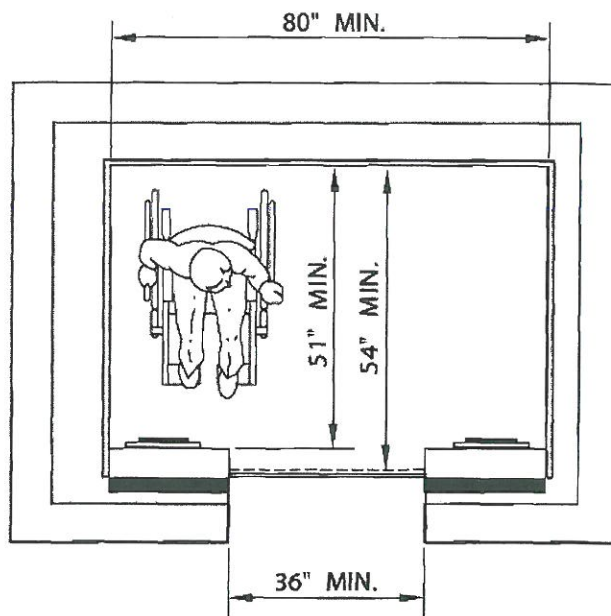
X: EXTENSION OF HANDRAIL SHALL BE EQUAL TO THE TREAD WIDTH PLUS 12".



**FIGURE 11A-6E
STAIR HANDRAILS**



(a) SIDE OPENING DOOR



(b) CENTER OPENING DOOR

FIGURE 11A-7A
MINIMUM DIMENSIONS OF ELEVATOR CARS

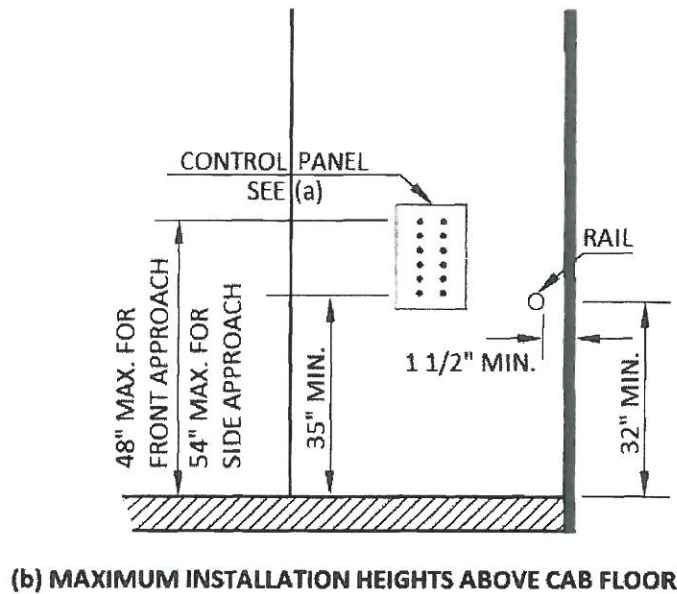
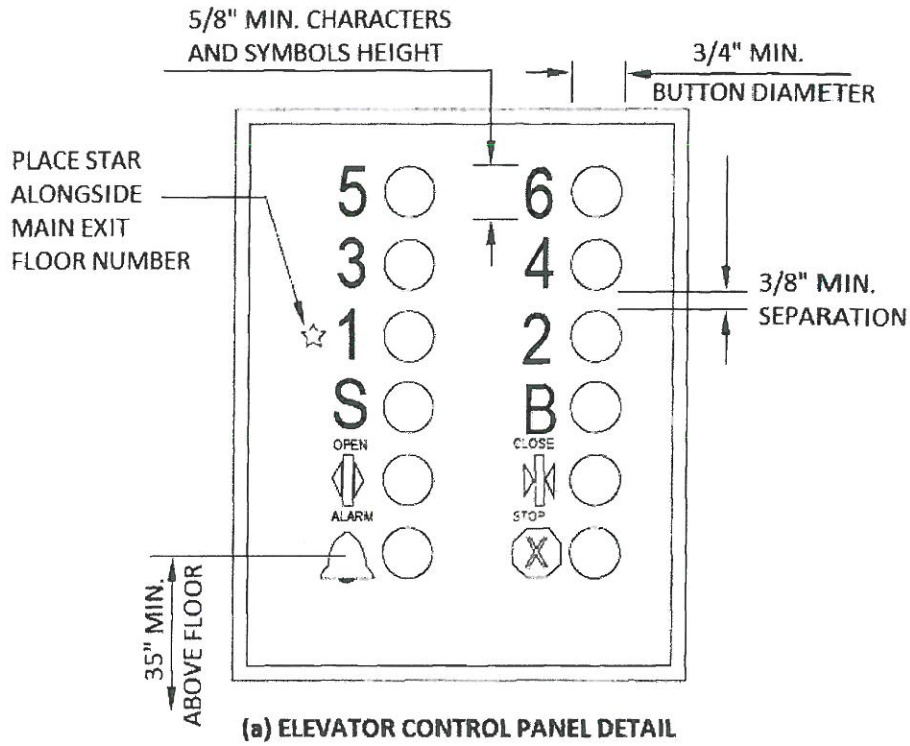
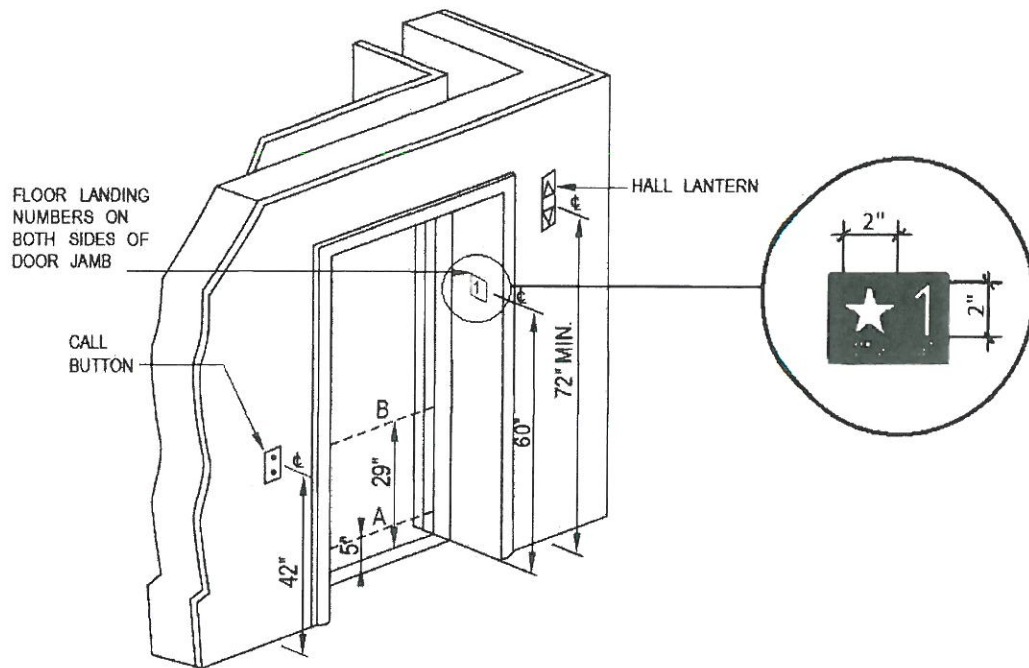
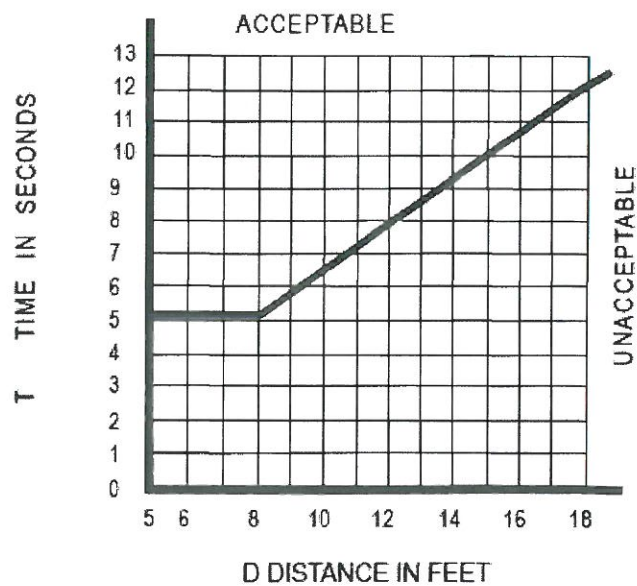


FIGURE 11A-7B
ELEVATOR CONTROL PANEL



NOTE:
 THE AUTOMATIC DOOR REOPENING DEVICE IS ACTIVATED IF AN OBJECT PASSES THROUGH EITHER LINE A OR LINE B. LINE A AND LINE B REPRESENT THE VERTICAL LOCATION OF THE DOOR REOPENING DEVICE NOT REQUIRING CONTACT.

**FIGURE 11A-7C
 HOISTWAY AND ELEVATOR ENTRANCES**



**FIGURE 11A-7D
 GRAPH OF TIMING EQUATION**

HOUSING ACCESSIBILITY

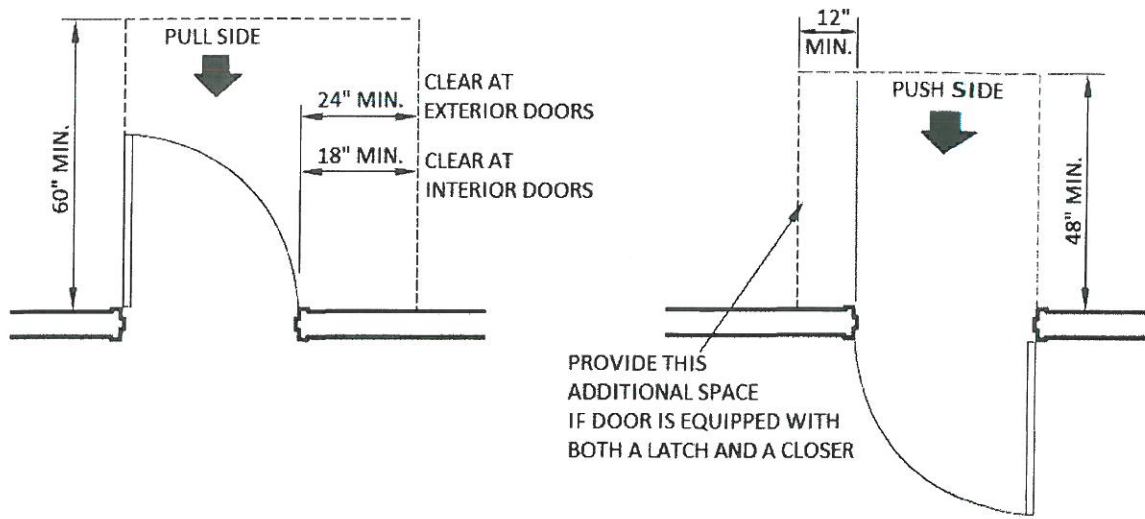


FIGURE 11A-8A
FRONT APPROACHES—SWINGING DOORS

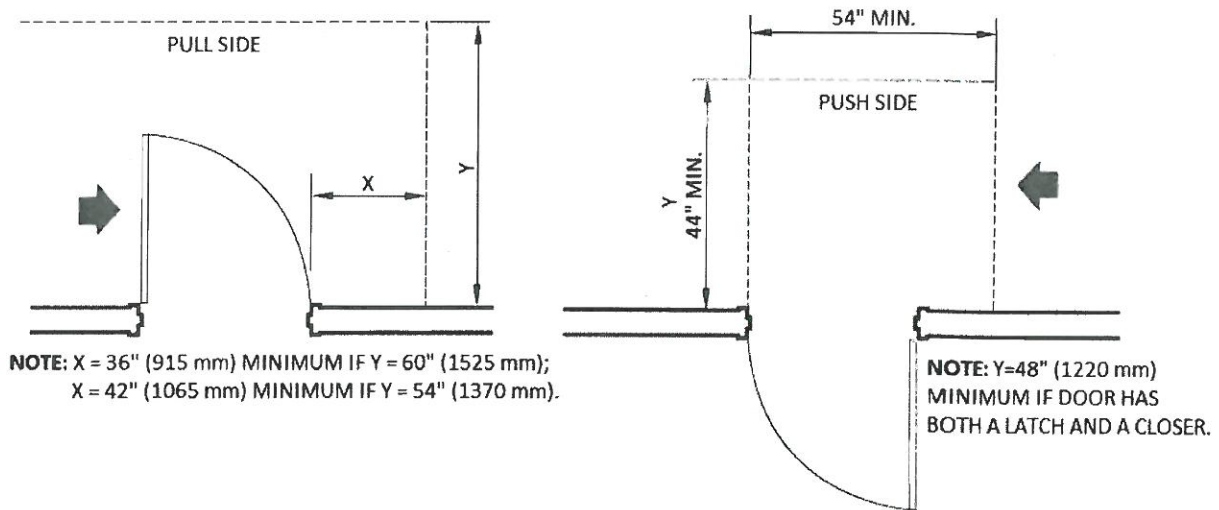
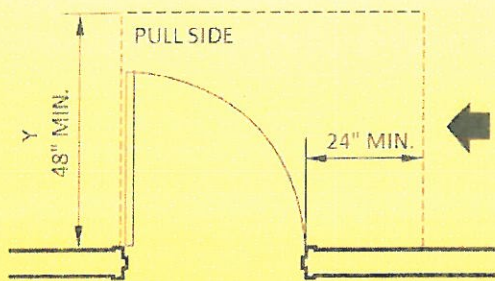
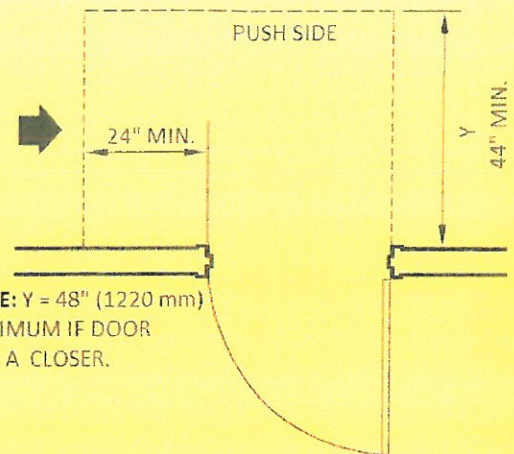


FIGURE 11A-8B
HINGE SIDE APPROACHES—SWINGING DOORS

LEVEL MANEUVERING CLEARANCE AT DOORS



NOTE: Y = 54" (1370 mm) MINIMUM
IF DOOR HAS A CLOSER.



NOTE: Y = 48" (1220 mm) MINIMUM
IF DOOR HAS A CLOSER.

FIGURE 11A-8C
LATCH SIDE APPROACHES—SWINGING DOORS

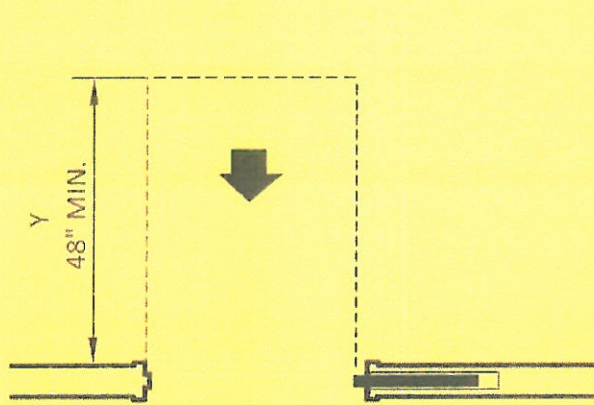


FIGURE 11A-8D
FRONT APPROACH—SLIDING DOORS
AND FOLDING DOORS

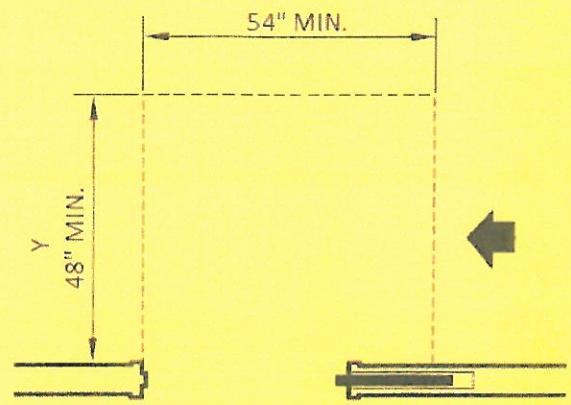


FIGURE 11A-8E
SLIDE SIDE APPROACH—SLIDING DOORS
AND FOLDING DOORS

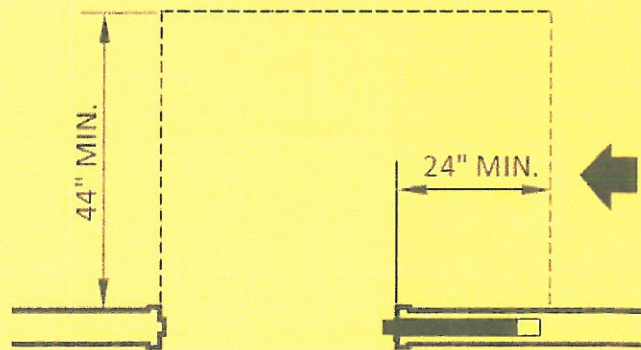
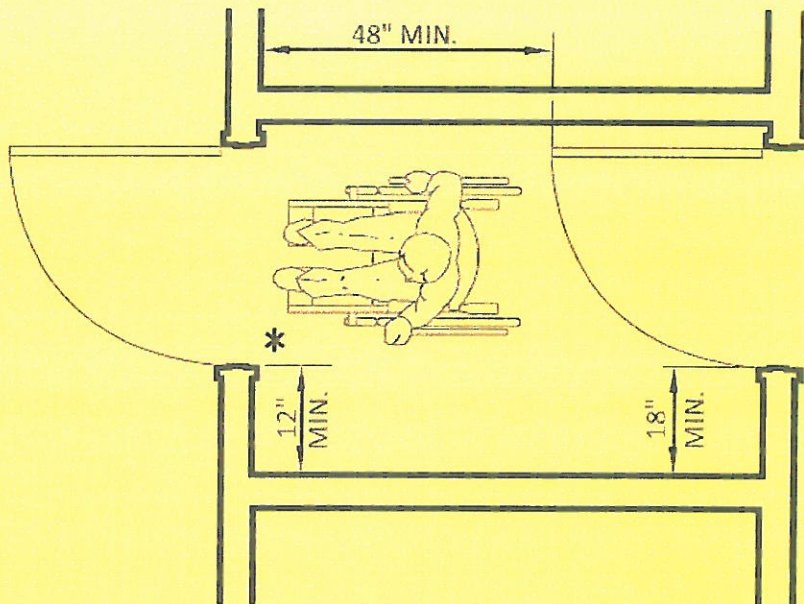
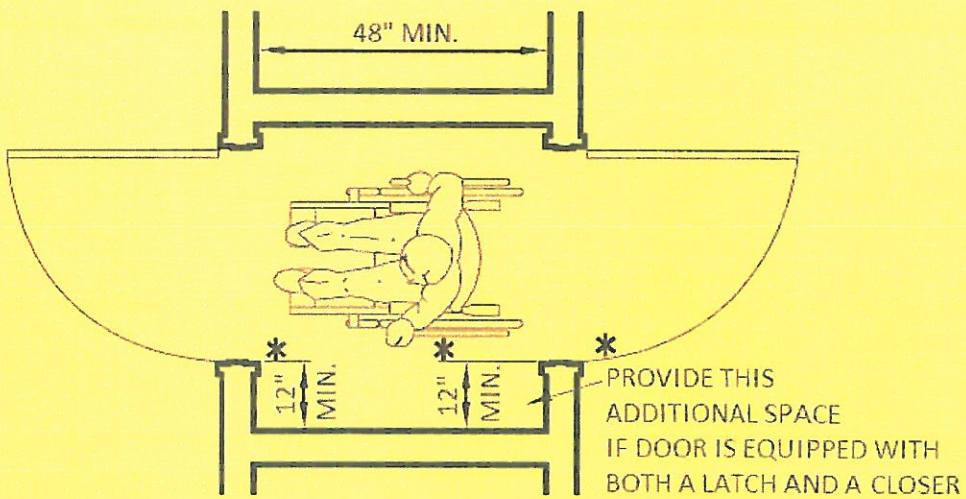


FIGURE 11A-8F
LATCH SIDE APPROACH—SLIDING DOORS AND FOLDING DOORS



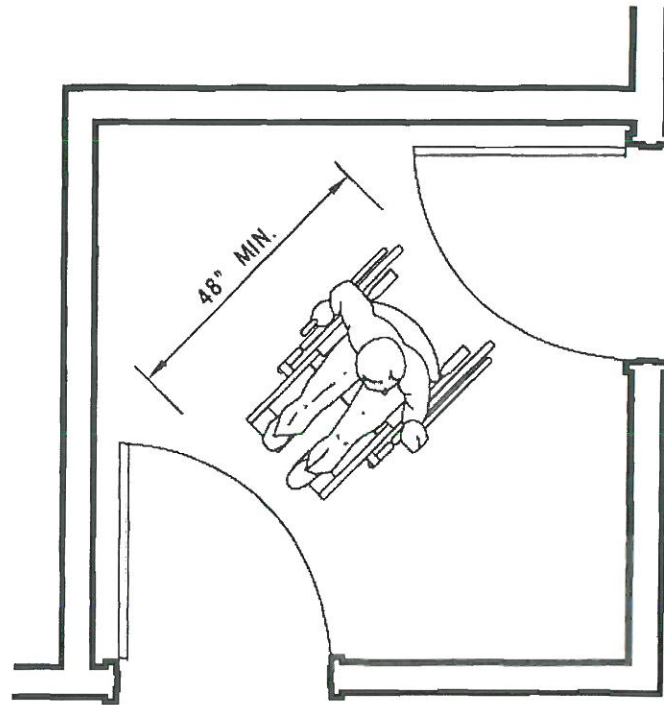
(a) DOORS IN SERIES



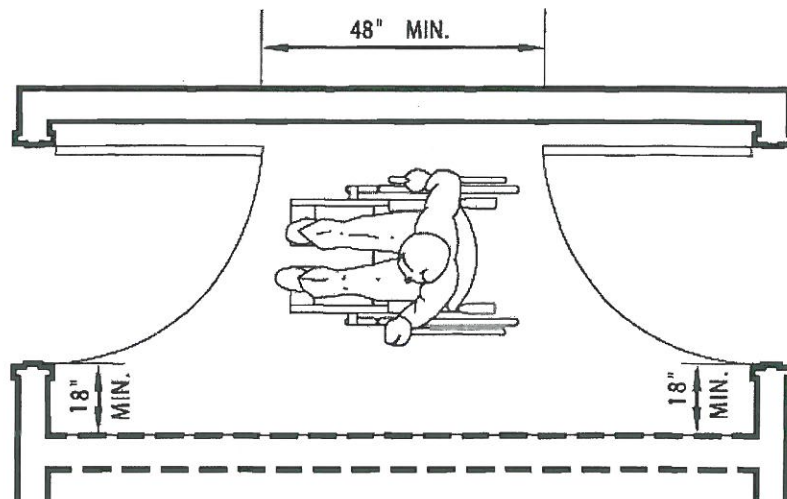
(b) BOTH DOORS OPEN OUT

(SERVING OTHER THAN A REQUIRED EXIT STAIRWAY)

FIGURE 11A-8G
VESTIBULE



(a) DOORS AT ADJACENT WALLS



(b) DOORS AT OPPOSITE WALLS

FIGURE 11A-8H
VESTIBULE
(SERVING OTHER THAN A REQUIRED EXIT STAIRWAY)

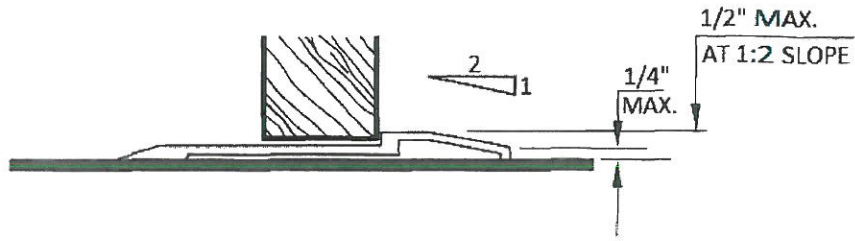


FIGURE 11A-8I
THRESHOLDS

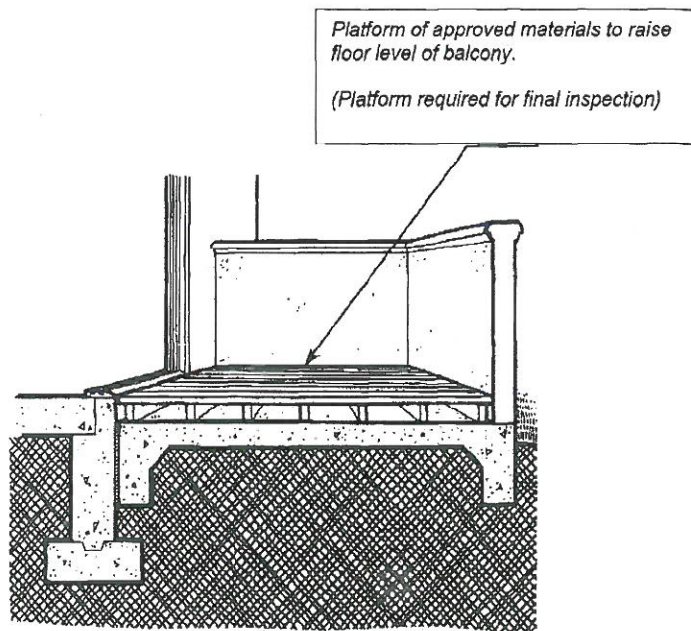


FIGURE 11A-8J
PLATFORM AT SECONDARY EXTERIOR DOOR

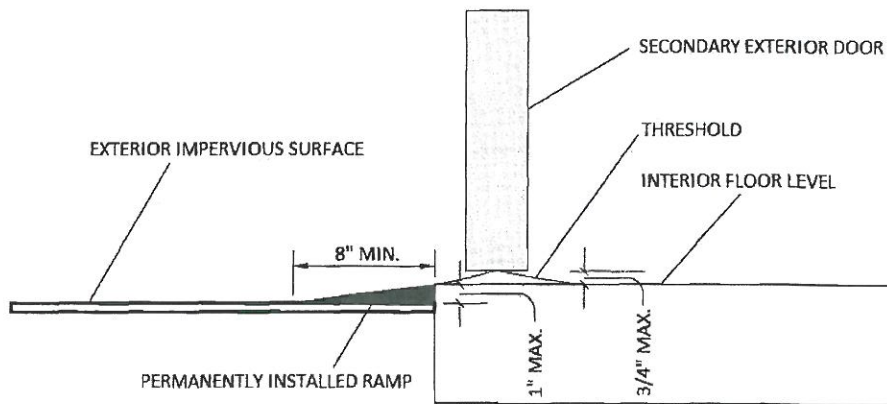
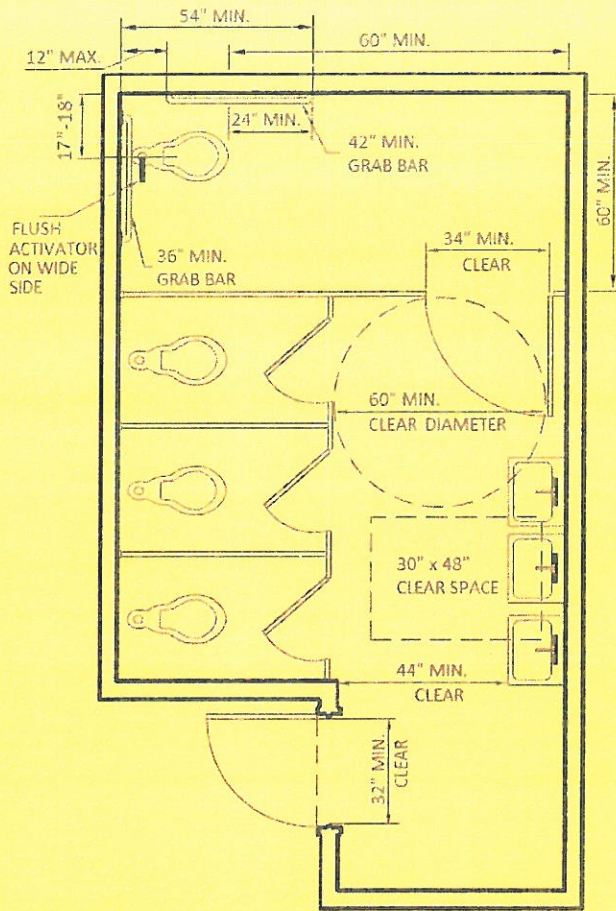
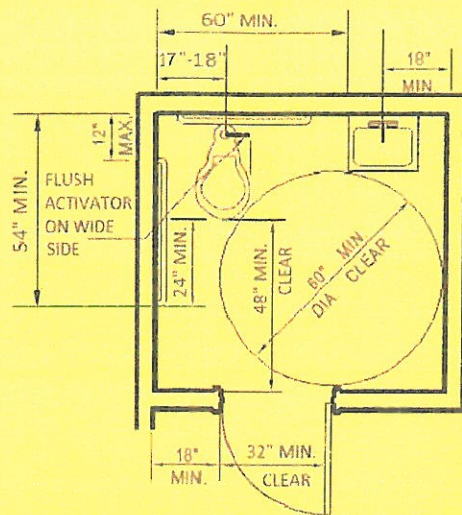


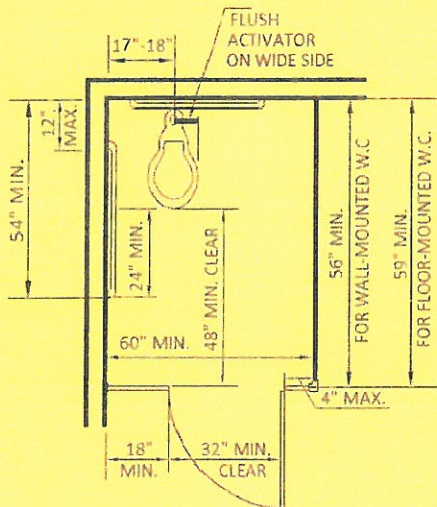
FIGURE 11A-8K
RAMP AT SECONDARY EXTERIOR DOOR



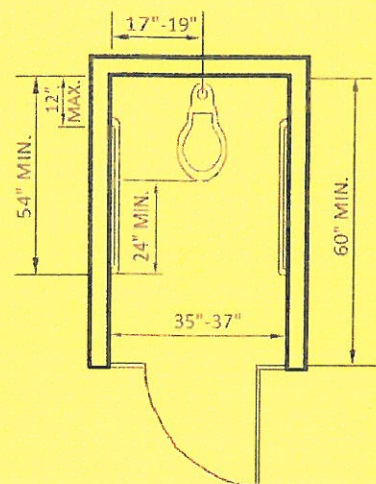
(a) MULTIPLE-ACCOMMODATION TOILET FACILITY



(b) SINGLE-ACCOMMODATION TOILET FACILITY

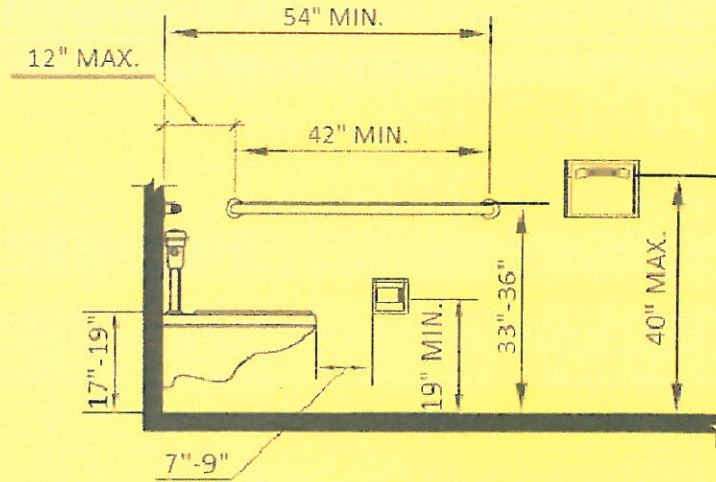


(c) ACCESSIBLE WATER CLOSET COMPARTMENT WITHIN MULTIPLE-ACCOMMODATION TOILET FACILITY

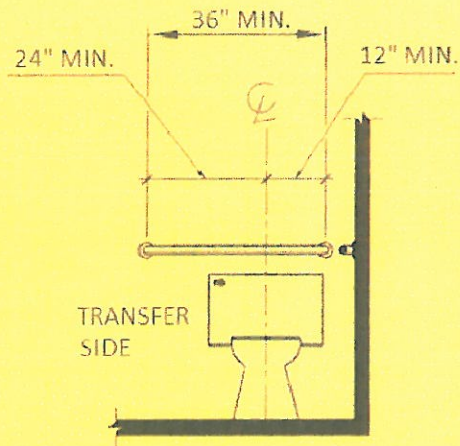


(d) AMBULATORY ACCESSIBLE COMPARTMENT

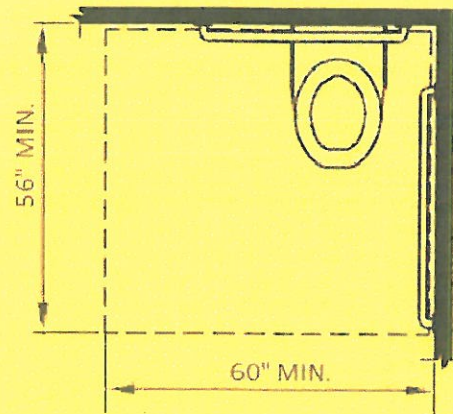
FIGURE 11A-9A
TOILET FACILITIES



(a) SIDE VIEW

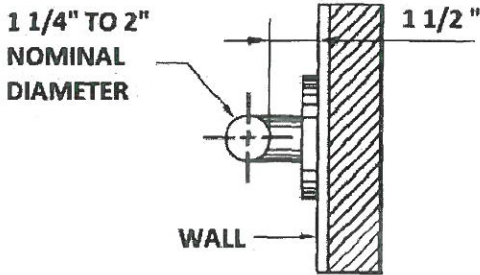


(b) FRONT VIEW

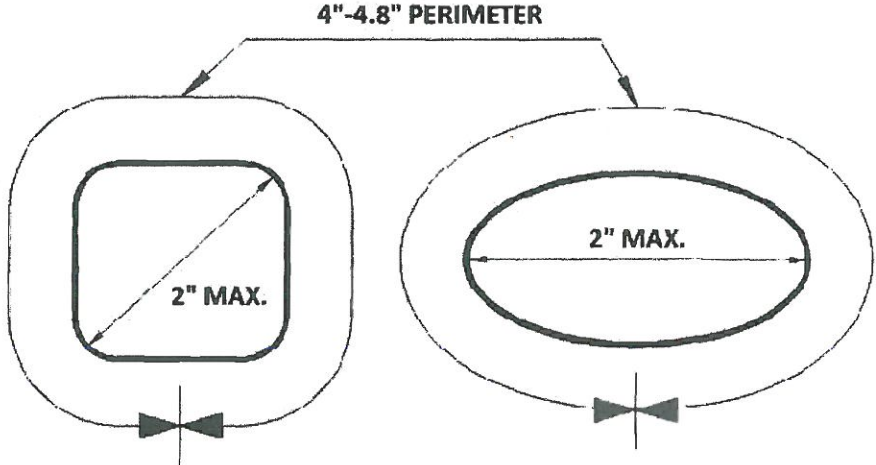


(c) CLEAR FLOOR SPACE AT WATER CLOSETS

FIGURE 11A-9B
WATER CLOSETS



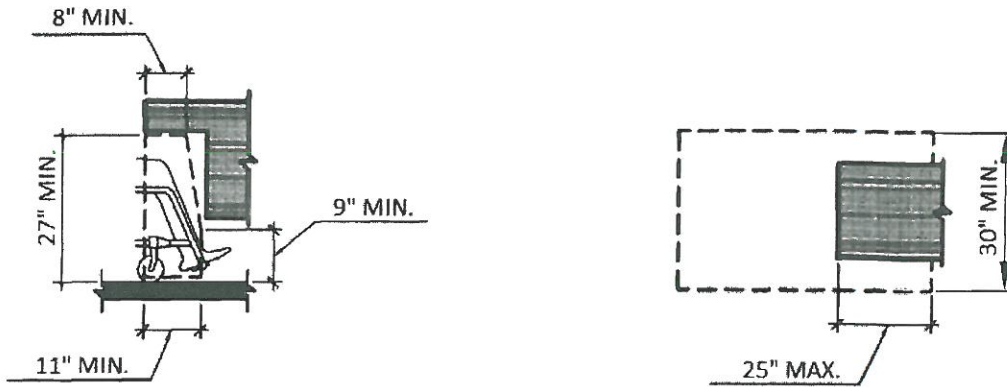
(a) SECTION THROUGH TYPICAL CIRCULAR GRAB BAR



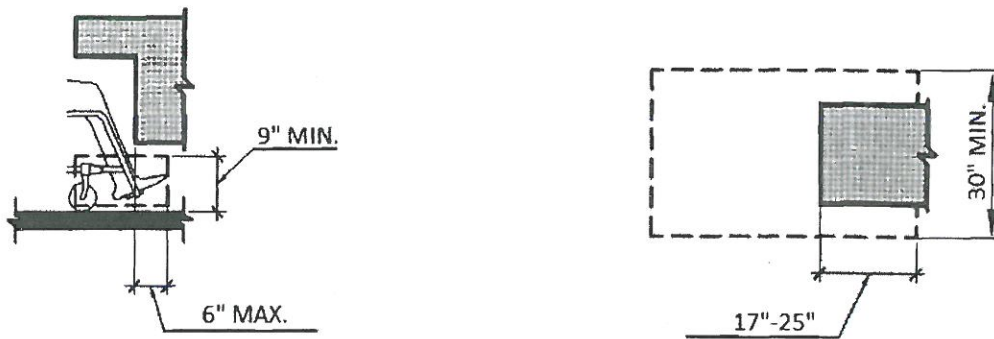
(b) NON-CIRCULAR CROSS SECTIONS

FIGURE 11A-9C
GRAB BARS

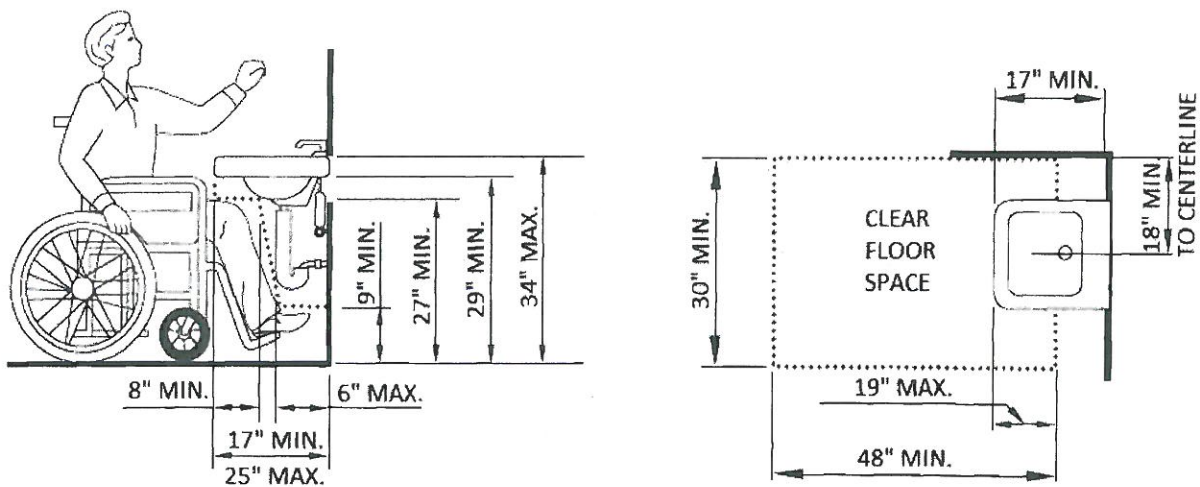
HOUSING ACCESSIBILITY



(a) KNEE SPACE - GENERAL REQUIREMENT

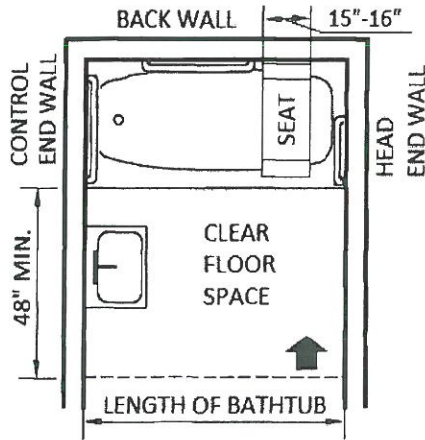


(b) TOE SPACE - GENERAL REQUIREMENT

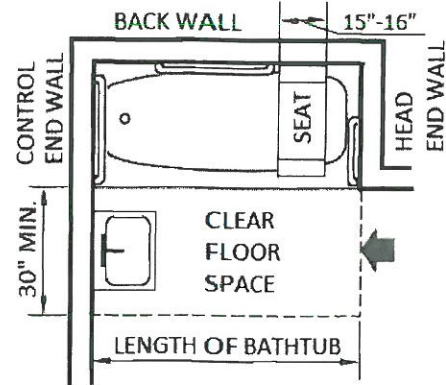


(c) KNEE AND TOE SPACE FOR LAVATORIES

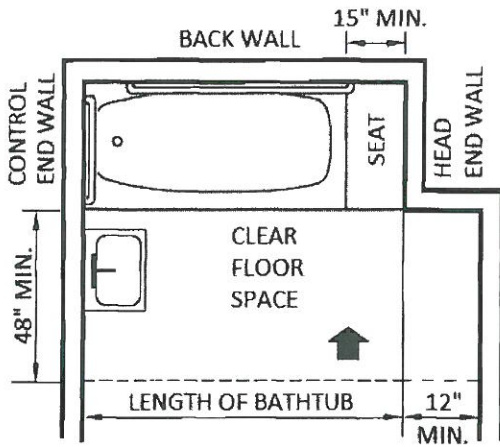
FIGURE 11A-9D
KNEE AND TOE SPACE



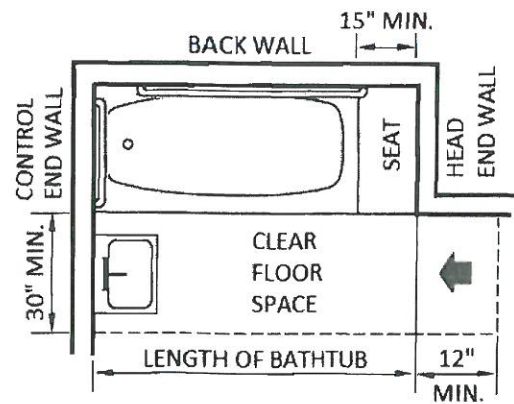
(a) REMOVABLE SEAT IN TUB - FRONT APPROACH



(b) REMOVABLE SEAT IN TUB - SIDE APPROACH



(c) PERMANENT SEAT IN TUB - FRONT APPROACH

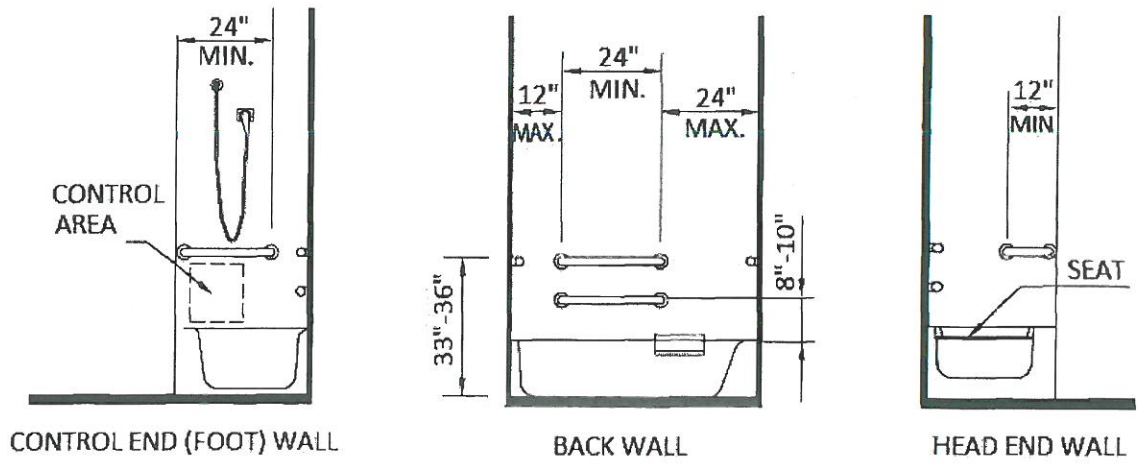


(d) PERMANENT SEAT IN TUB - SIDE APPROACH

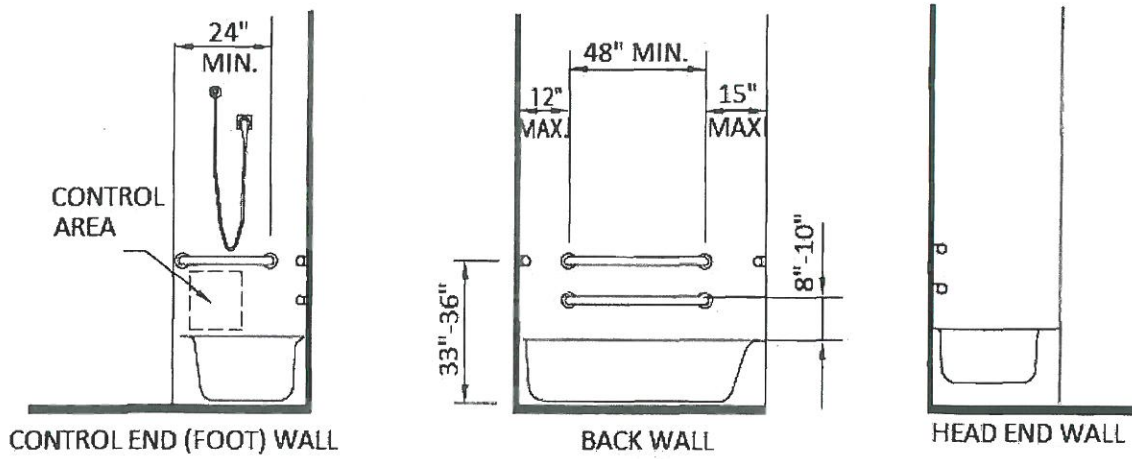
NOTE: SEE FIGURE 11A-9F FOR SIZE OF GRAB BARS

FIGURE 11A-9E
CLEAR FLOOR SPACE AT BATHTUBS

HOUSING ACCESSIBILITY



(a) WITH REMOVABLE SEAT IN TUB

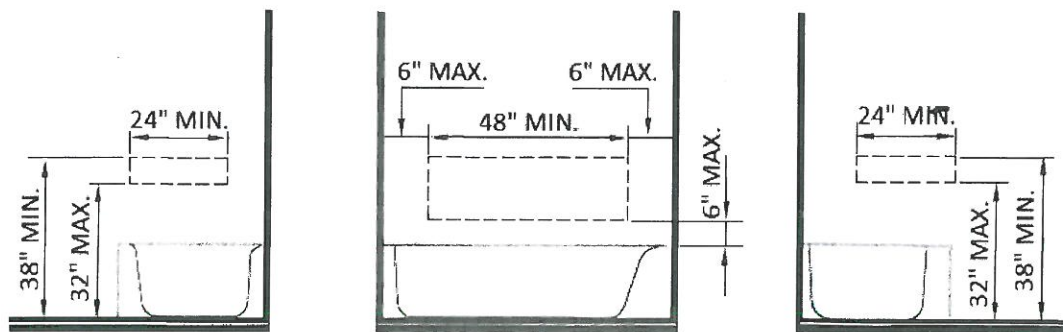


(b) WITH PERMANENT SEAT AT HEAD OF TUB

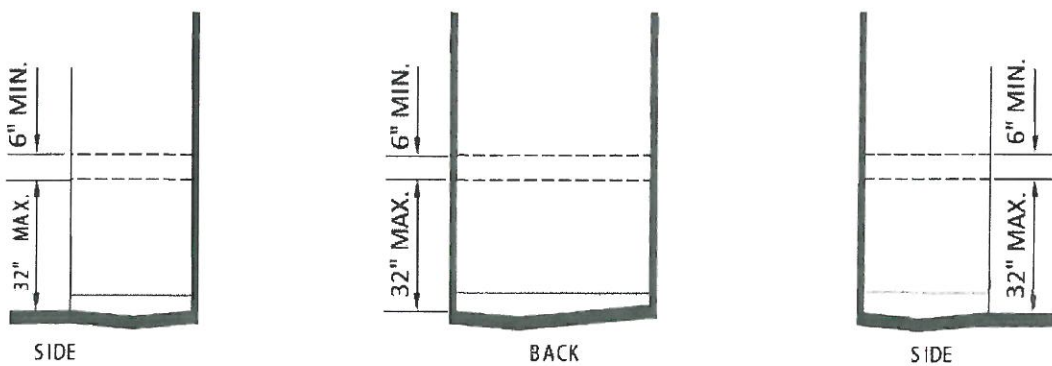
FIGURE 11A-9F
GRAB BARS AT BATHTUBS



(a) GRAB BAR REINFORCEMENT FOR ADAPTABLE WATER CLOSETS



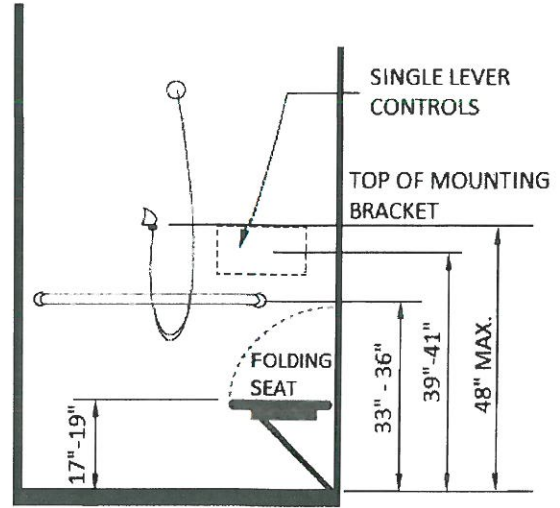
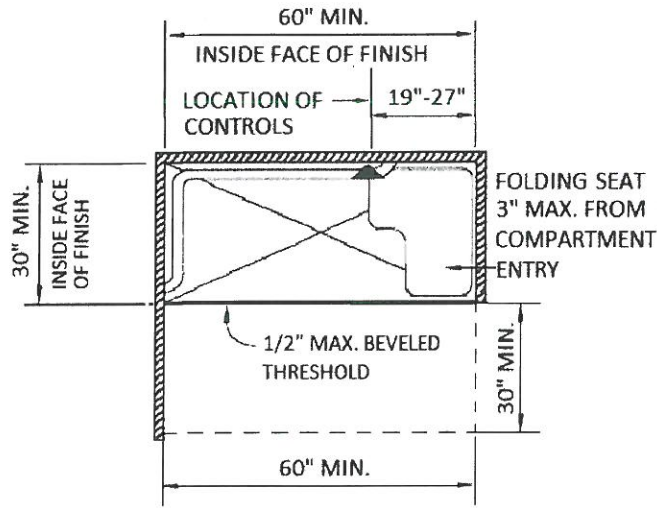
(b) GRAB BAR REINFORCEMENT FOR ADAPTABLE BATHTUBS



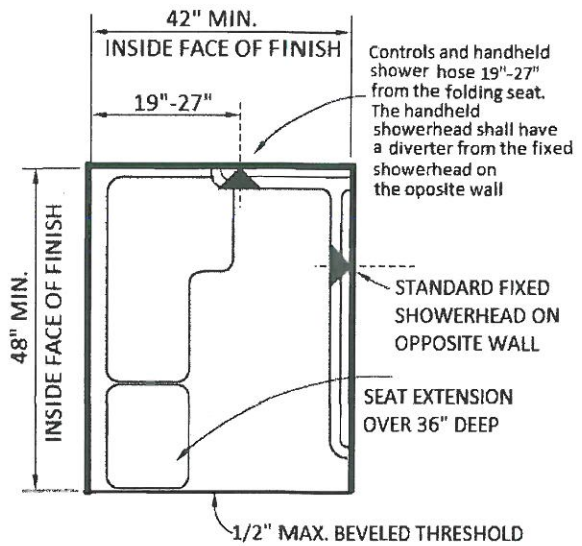
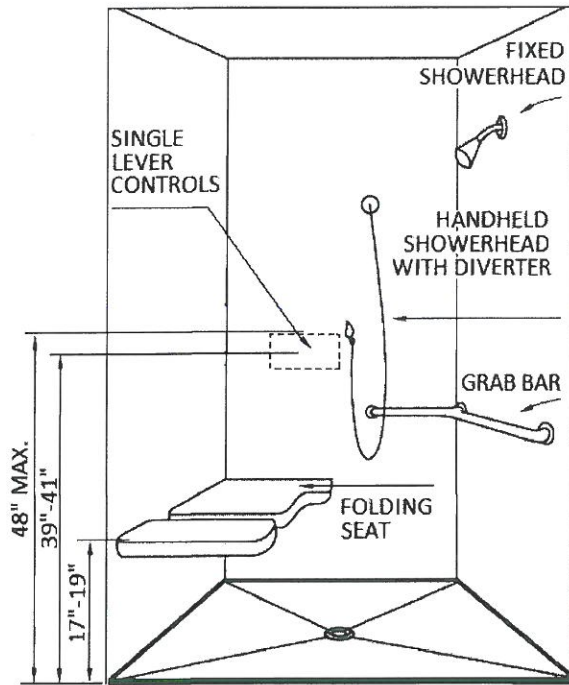
(c) GRAB BAR REINFORCEMENT FOR ADAPTABLE SHOWERS

AREAS OUTLINED IN DASHED LINES REPRESENT LOCATION FOR FUTURE INSTALLATION OF GRAB BARS

FIGURE 11A-9G
REINFORCEMENT FOR GRAB BARS

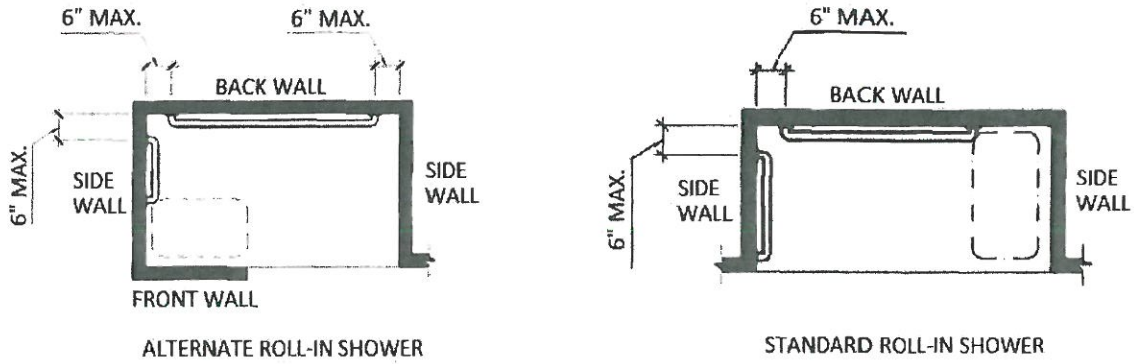


(a) 60" x 30" ROLL-IN SHOWER

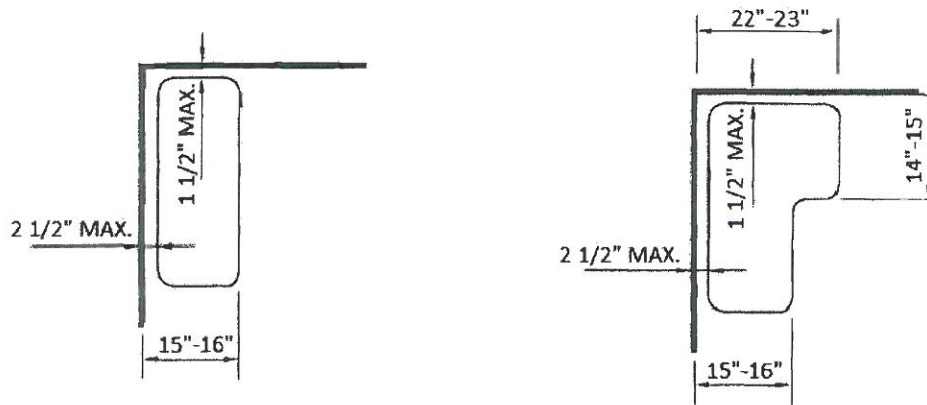


(b) 42" x 48" ROLL-IN SHOWER

FIGURE 11A-9H
STANDARD ROLL-IN SHOWER

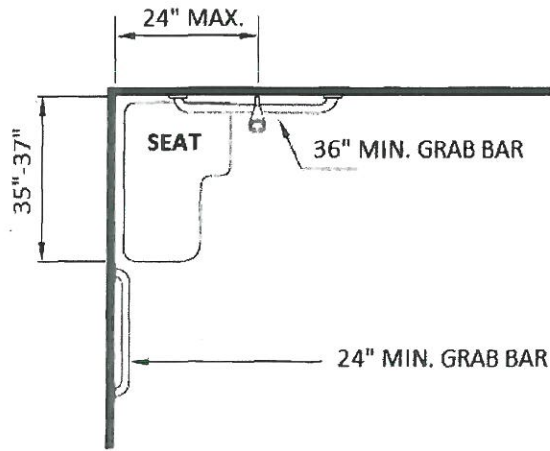


(a) GRAB BARS

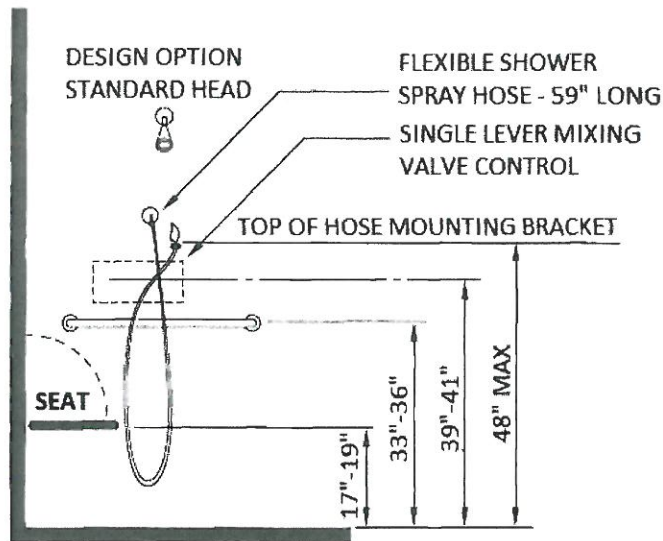


(b) SHOWER SEATS

FIGURE 1A-9I
SHOWER SEATS AND GRAB BARS



(a) PLAN VIEW



(b) ELEVATION

FIGURE 11A-9J
OPEN SHOWER

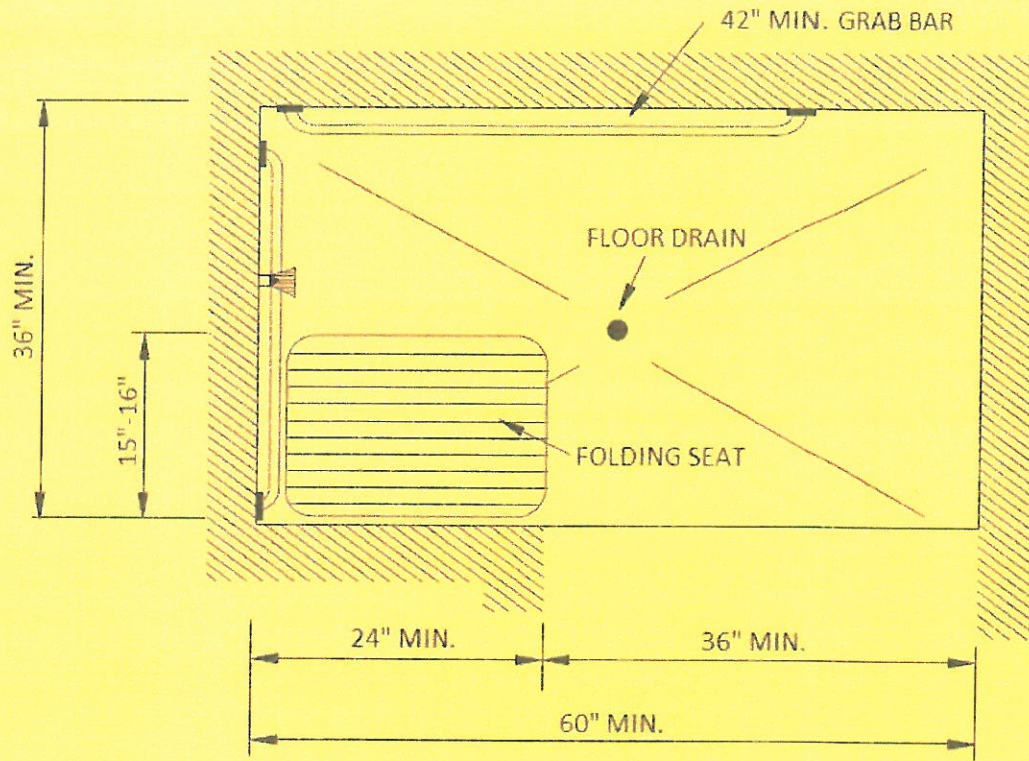


FIGURE 11A-9K
ALTERNATE ROLL-IN SHOWER

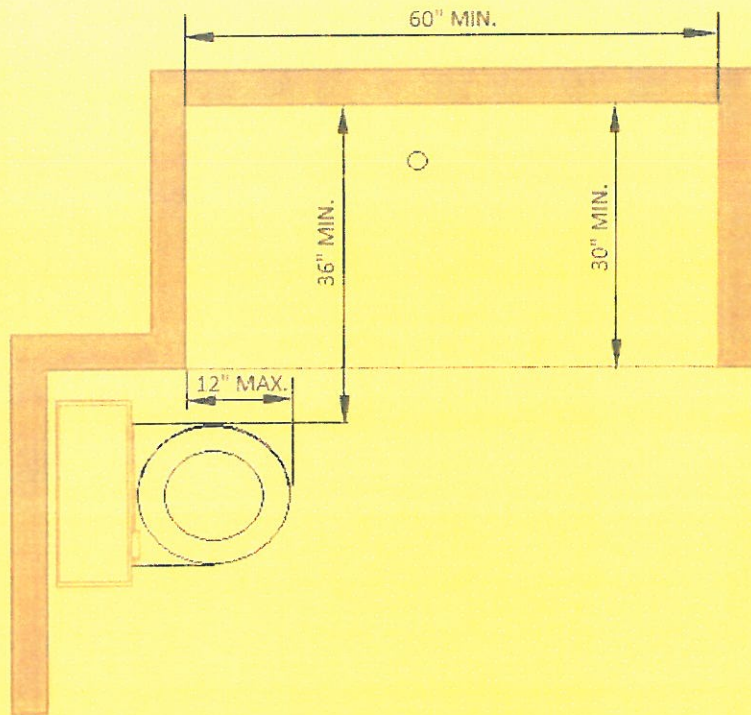


FIGURE 11A-9L
SHOWER WITH WATER CLOSET

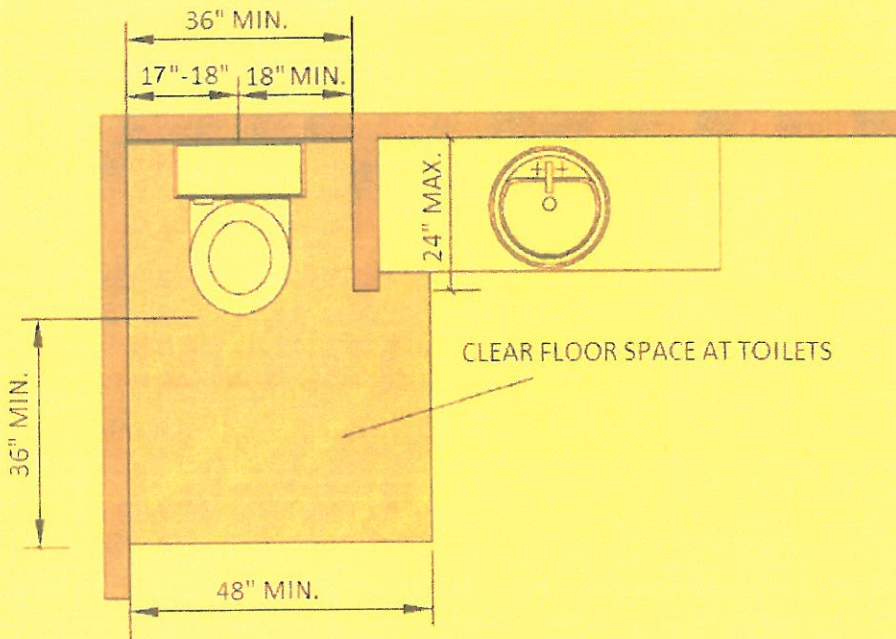
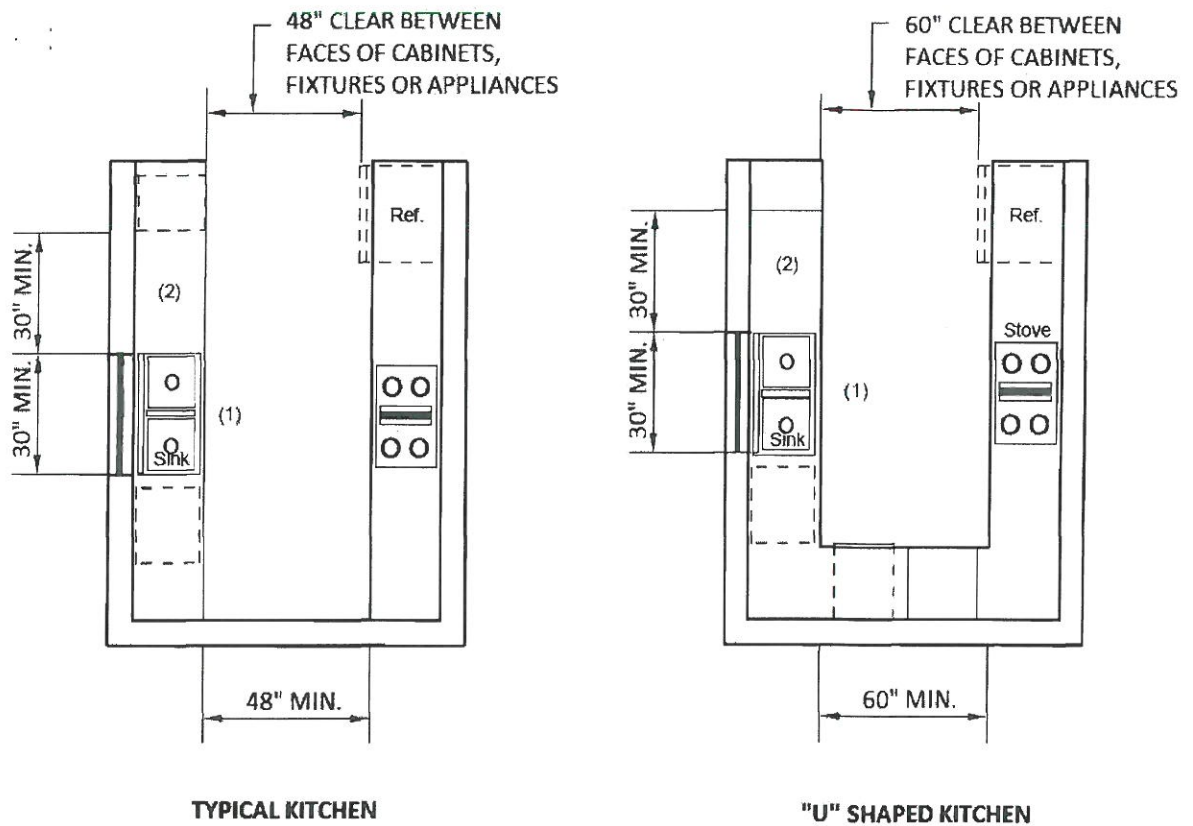


FIGURE 11A-9M
WING WALL OR CABINET AT WATER CLOSET



- (1) 30-inch wide counter top space for sink installation with removable base cabinet and finish flooring beneath the sink
- (2) 30-inch wide counter top workspace
- (3) 30-inch by 48-inch clear space adjacent to range or cooktop to allow parallel approach
- (4) 30-inch by 48-inch either parallel approach at oven, dishwasher, trash compactor or refrigerator

FIGURE 11A-10A
KITCHEN SPECIFICATIONS

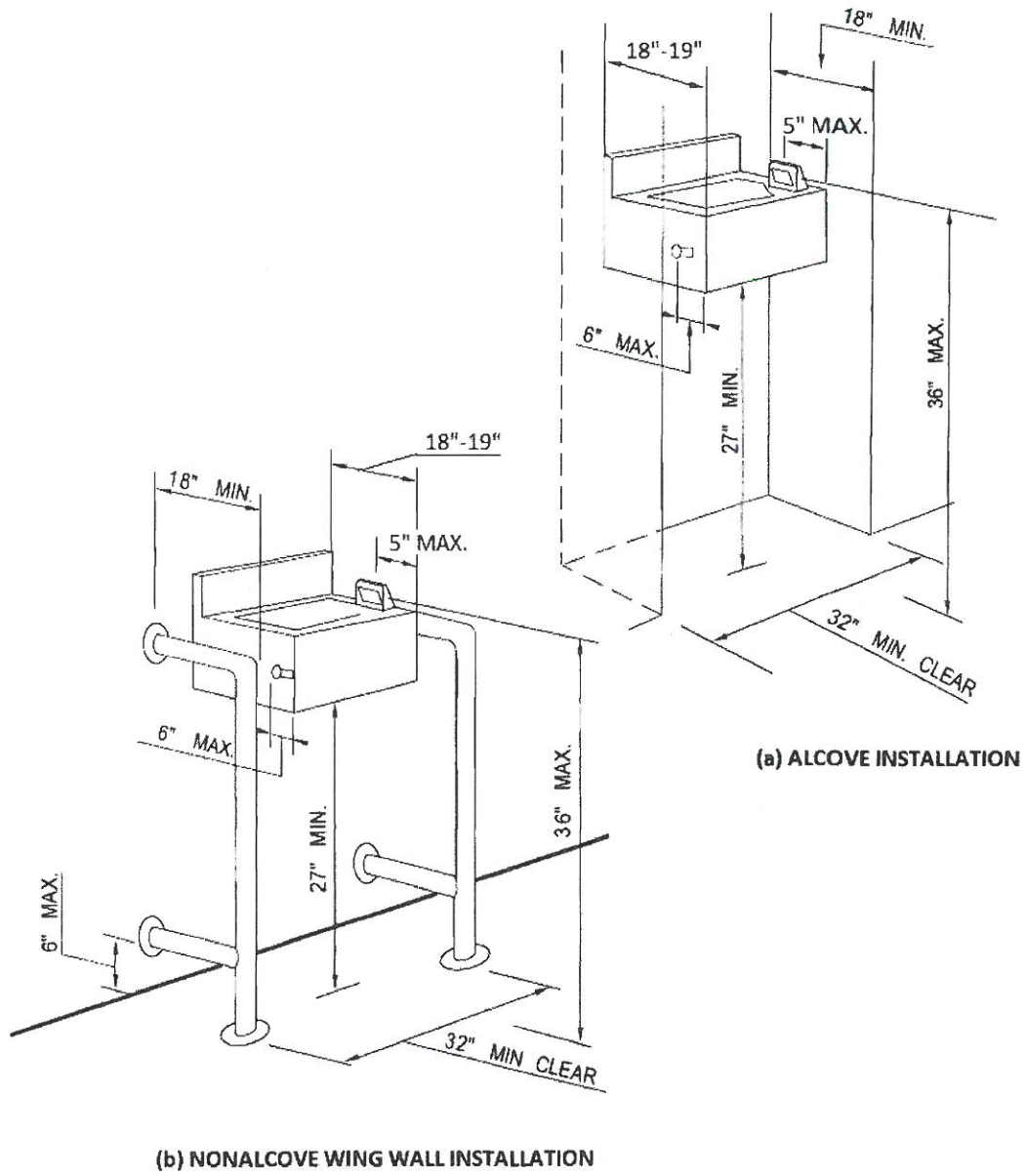


FIGURE 11A-11A
DRINKING FOUNTAINS

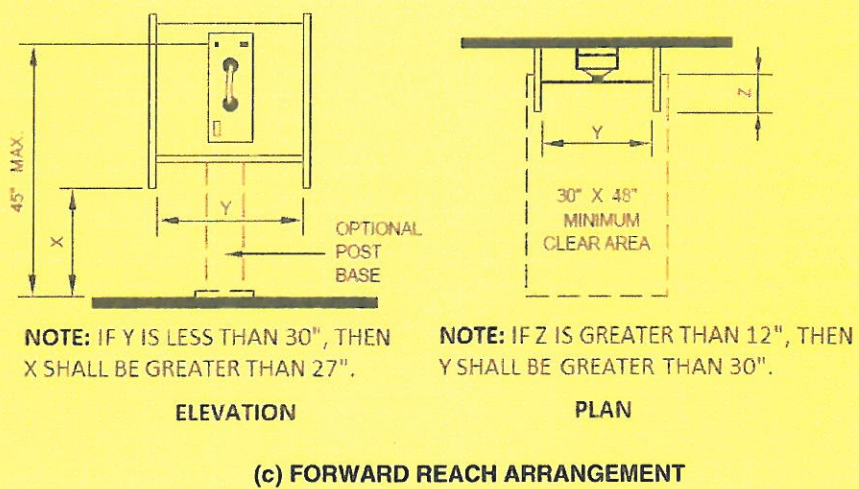
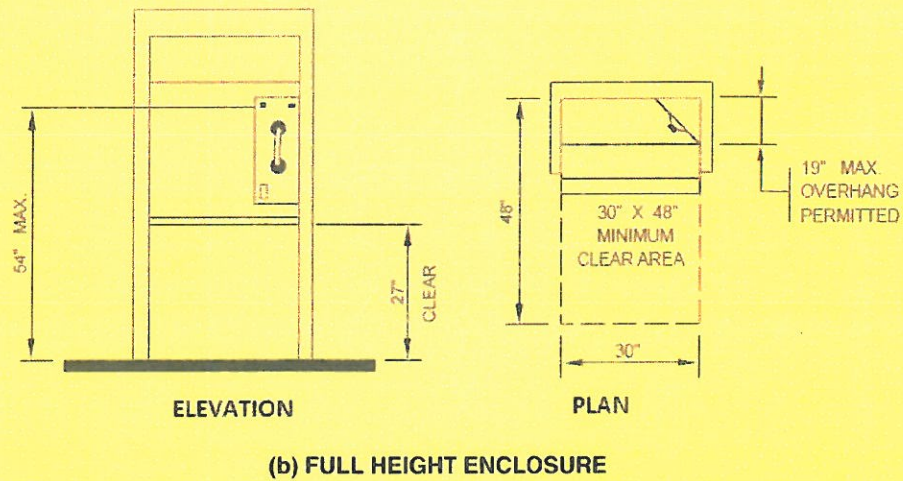
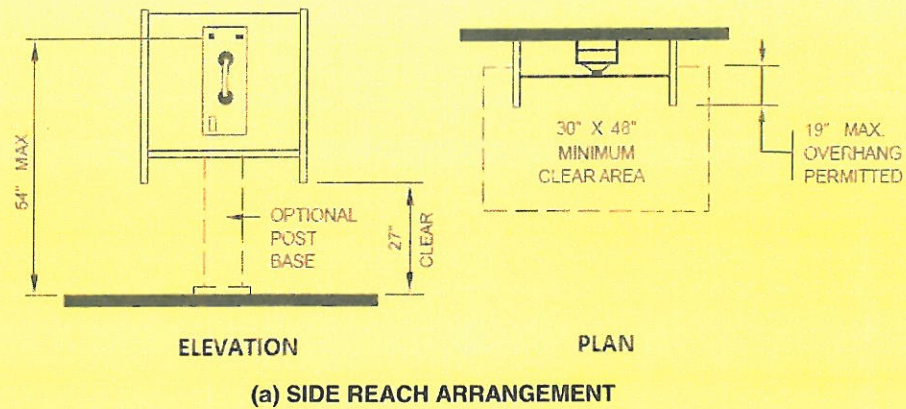


FIGURE 11A-11B
MOUNTING HEIGHTS AND CLEARANCES FOR TELEPHONES



FIGURE 11A-11C
INTERNATIONAL TTY SYMBOL



FIGURE 11A-11D
VOLUME CONTROL TELEPHONES



FIGURE 11A-11E
INTERNATIONAL SYMBOL OF ACCESS FOR HEARING LOSS

||

||